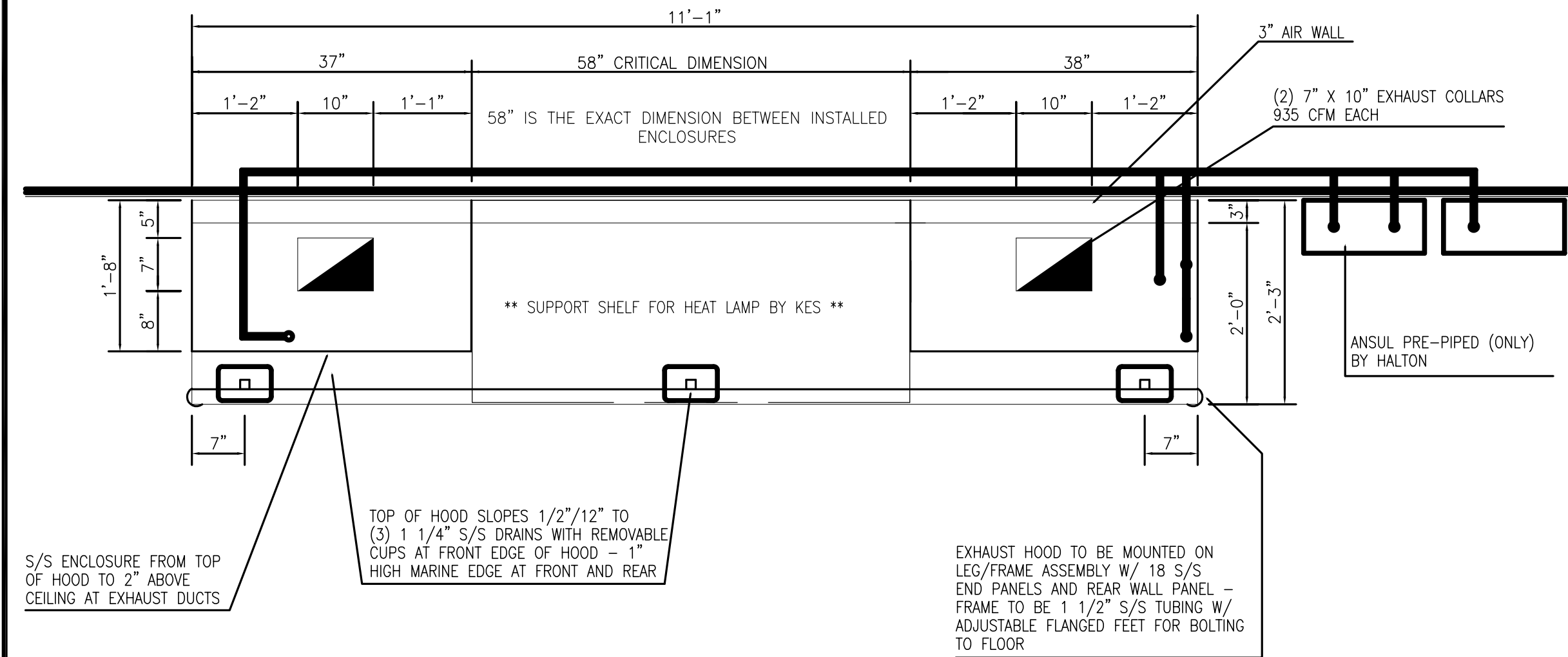


A ELEV. - EXHAUST HOOD GL-L
SCALE NTS

ITEM NO. F15 - EXHAUST HOOD, (6-Vat Backshelf w/ Prince Castle Panel BY KES)



A PLAN - EXHAUST HOOD GL-L
SCALE NTS

ITEM NO.F15 - EXHAUST HOOD, (6-Vat Backshelf - Prince Castle Panel BY KES)

NSF

SP

UL

UL

THIS DRAWING IS THE PROPERTY OF ACTION AIR AND CAN BE REPRODUCED ONLY BY PERMISSION, IN WHICH CASE, ALL DRAWINGS MUST BEAR THE NAME ACTION AIR.

POPEYES

LOUISIANA KITCHEN

CITY / STATE

MODEL GL-L

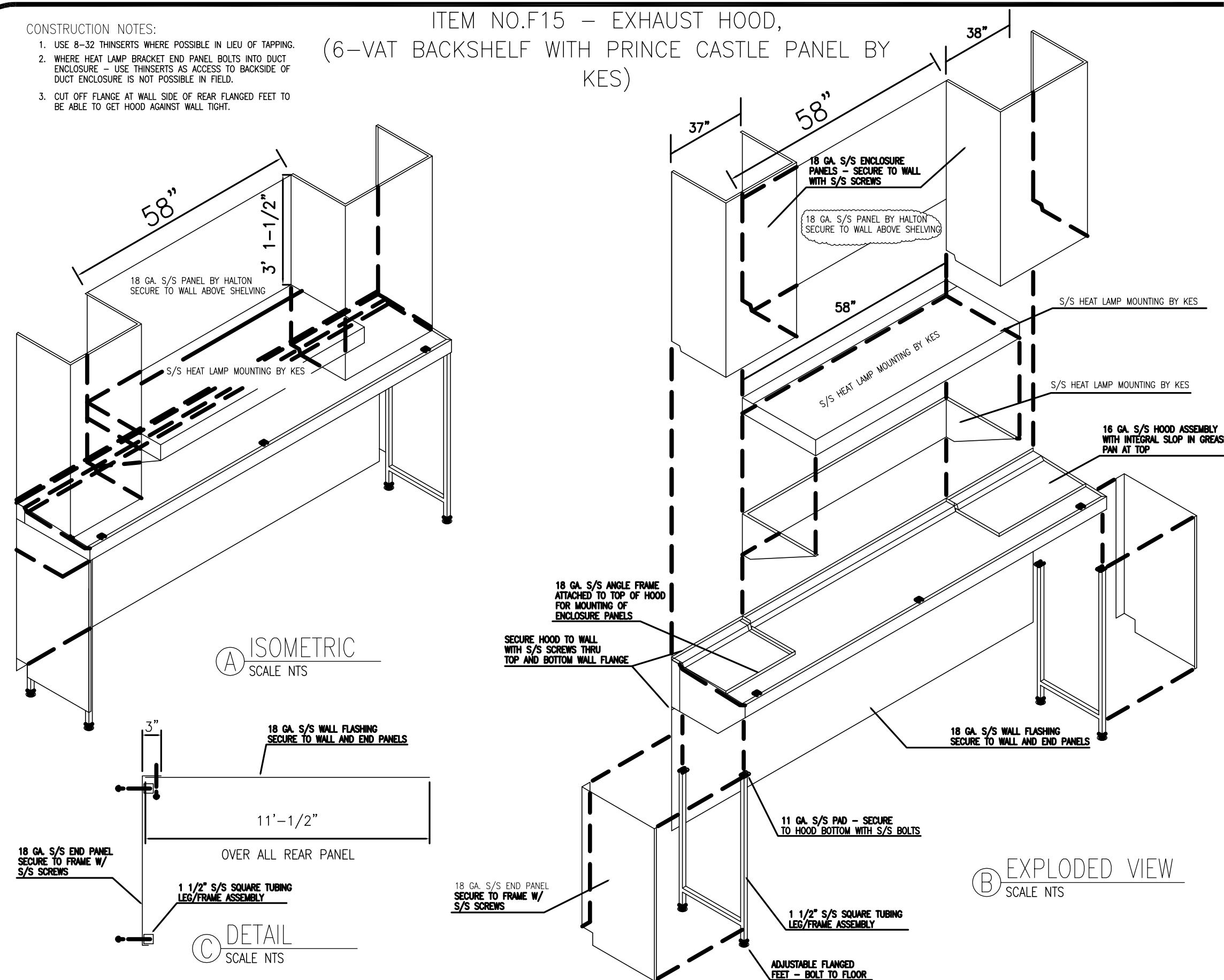
DATE DRAWN: 2/22/11

CHECKED BY:

DATE CHECKED:

PROJECT No.: 6DL11

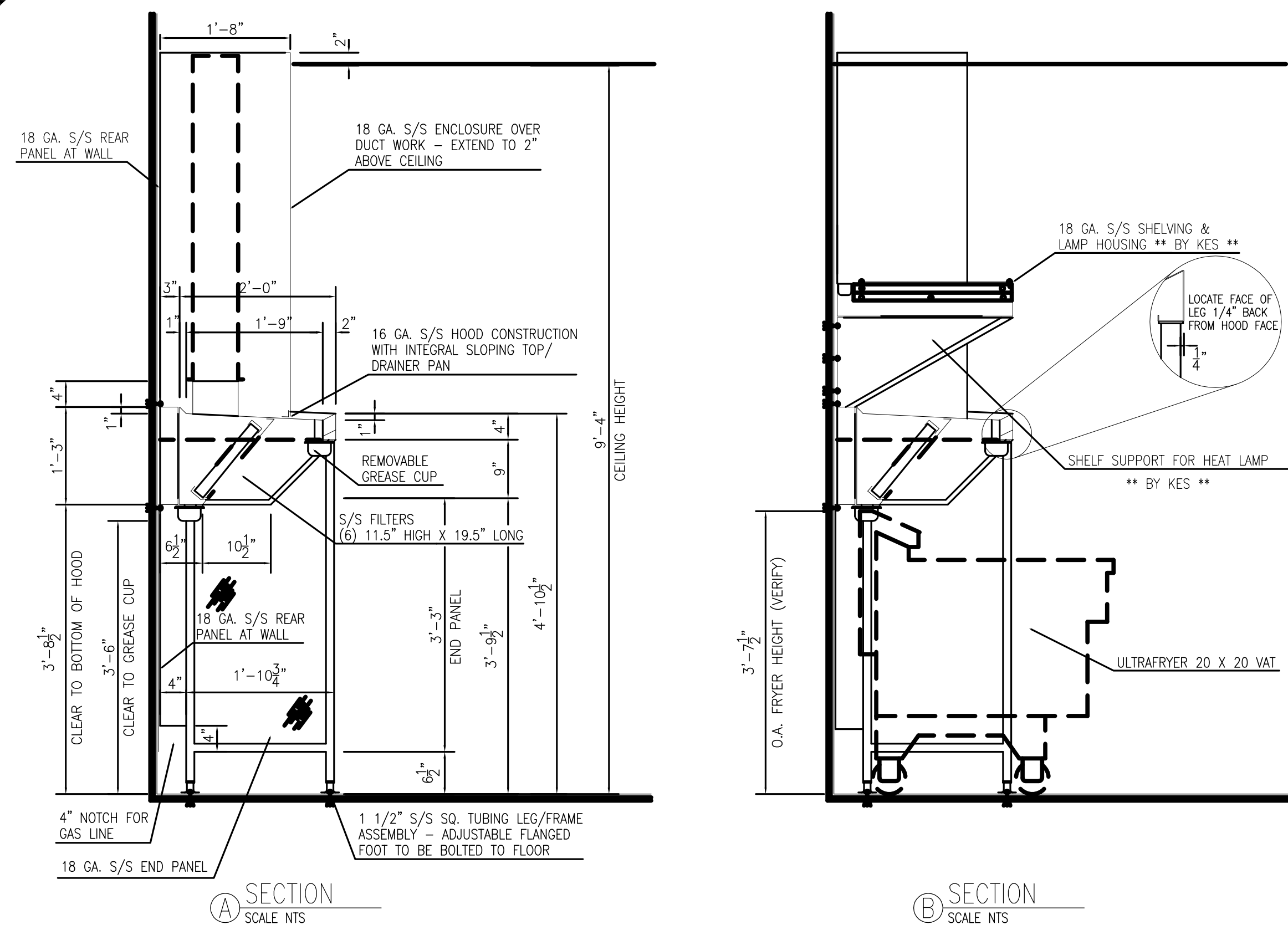
DRAWING No. 1 of 4



A ISOMETRIC
SCALE NTS

B EXPLODED VIEW
SCALE NTS

ITEM NO.F15 - EXHAUST HOOD, (6-Vat Backshelf w/ Prince Castle Panel BY KES)



A SECTION
SCALE NTS

B SECTION
SCALE NTS

NSF

SP

UL

UL

THIS DRAWING IS THE PROPERTY OF ACTION AIR AND CAN BE REPRODUCED ONLY BY PERMISSION, IN WHICH CASE, ALL DRAWINGS MUST BEAR THE NAME ACTION AIR.

POPEYES

LOUISIANA KITCHEN

CITY / STATE

MODEL GL-L

DATE DRAWN: 2/17/11

CHECKED BY:

DATE CHECKED:

PROJECT No.: 6DL11

DRAWING No. 2 of 4

NSF

SP

UL

UL

THIS DRAWING IS THE PROPERTY OF ACTION AIR AND CAN BE REPRODUCED ONLY BY PERMISSION, IN WHICH CASE, ALL DRAWINGS MUST BEAR THE NAME ACTION AIR.

POPEYES

LOUISIANA KITCHEN

CITY / STATE

MODEL GL-L

DATE DRAWN: 2/22/11

CHECKED BY:

DATE CHECKED:

PROJECT No.: 6DL11

DRAWING No. 3 of 4

NSF

SP

UL

UL

THIS DRAWING IS THE PROPERTY OF ACTION AIR AND CAN BE REPRODUCED ONLY BY PERMISSION, IN WHICH CASE, ALL DRAWINGS MUST BEAR THE NAME ACTION AIR.

POPEYES

LOUISIANA KITCHEN

CITY / STATE

MODEL GL-L

DATE DRAWN: 2/22/11

CHECKED BY:

DATE CHECKED:

PROJECT No.: 6DL11

DRAWING No. 4 of 4

POPEYES

400 PERIMETER CENTER TERRACE
SUITE 1000
ATLANTA, GA 30346
404-584-6450

THESE DRAWINGS ARE THE
PROPERTY OF
POPEYES / APC ENTERPRISES, INC.
AND SHALL NOT BE USED OR
REPRODUCED WITHOUT THE
EXPRESS WRITTEN PERMISSION
FROM THE OWNER.

MRP

DESIGN GROUP

3450 Acworth Due West Road
Building 100, Suite 120
Kennesaw, Georgia 30144
P. 770-917-9172
F. 770-917-9470
www.mrpdesign.com

ARCHITECT OF RECORD:
THOMAS E. MORGAN, JR.
ARCHITECT
423 FISCHER TRAIL
ELLIHAY, GEORGIA 30540

RELEASED FOR
CONSTRUCTION
ISSUES/REVISIONS
DATE DESCRIPTION
10/30/17 CHECK SET

POPEYES
HIGHWAY 441
CORNELIA, GA 30531
LOUISIANA KITCHEN LK-PLUS DESIGN STANDARDS
60 SEATS / DUAL-LINE PRODUCTION
JOB:17067

REVISIONS:
DATE: 9/23/13

M3
CHECKED: TM KR