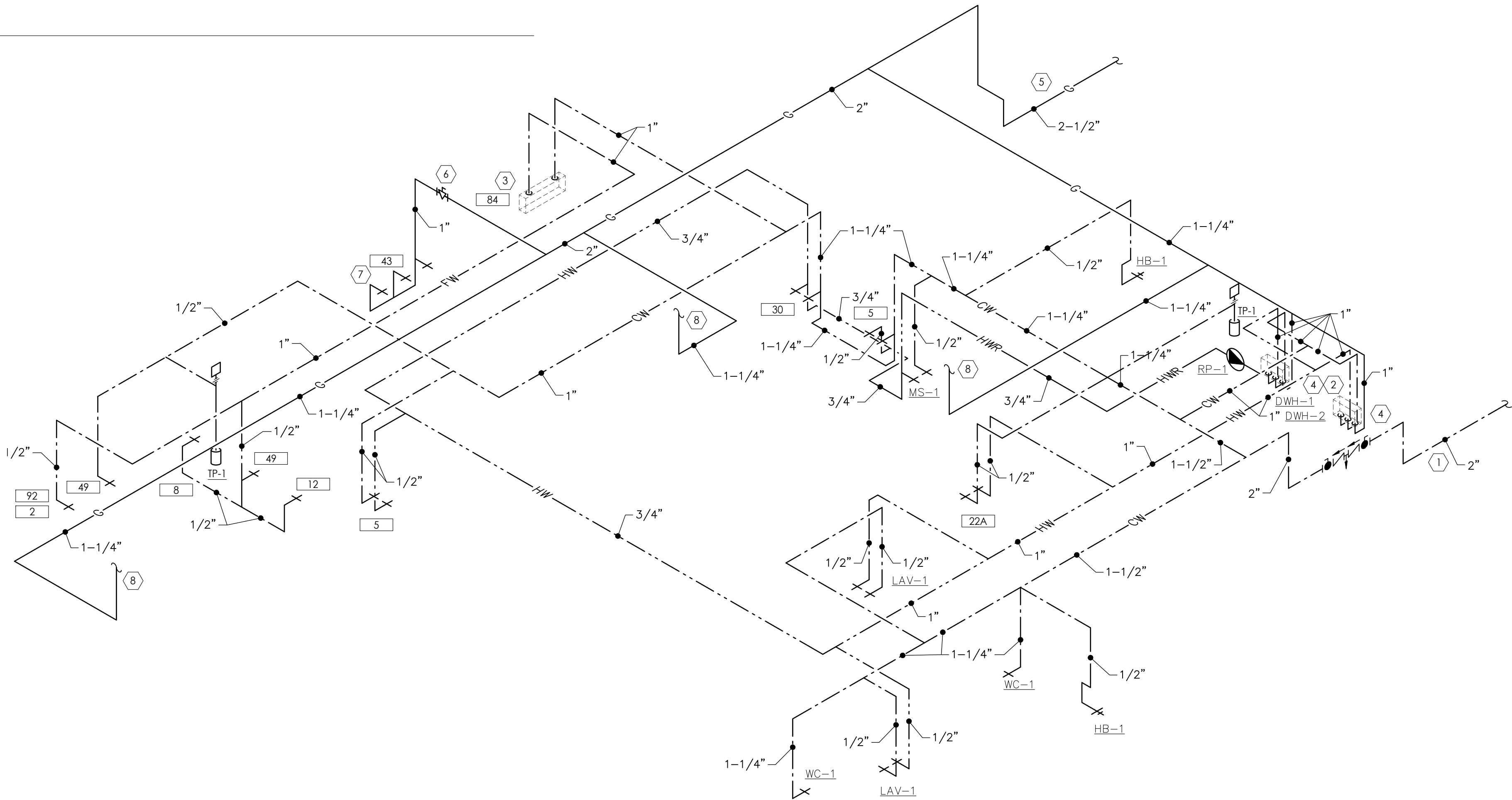


- CODED NOTES:** (#)
1. REFER TO WATER SERVICE ENTRANCE DETAIL ON SHEET P4.1 FOR CONTINUATION.
  2. REFER TO WATER HEATER DETAIL ON SHEET P4.1 FOR CONTINUATION.
  3. REFER TO WATER FILTER SYSTEM DETAIL ON SHEET P4.1 FOR CONTINUATION.
  4. PROVIDE CONNECTION TO WATER HEATER. REFER TO DETAIL ON SHEET P4.1.
  5. 2-1/2" NATURAL GAS FROM GAS METER. REFER TO DETAIL ON SHEET P4.1.
  6. KITCHEN GAS SHUTOFF VALVE. REFER TO DETAIL ON SHEET P4.1.
  7. REFER TO KITCHEN GAS EQUIPMENT CONNECTION DETAIL ON SHEET P4.1.
  8. REFER TO ROOF PLAN FOR CONTINUATION.

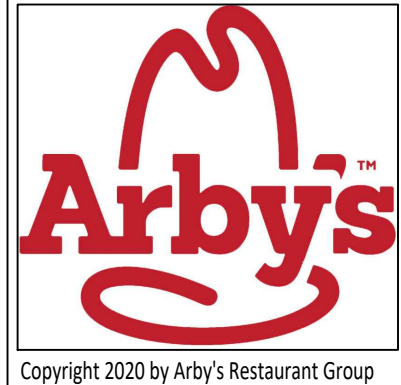
**1 SANITARY & VENT RISERS - PLUMBING**  
1/4" = 1'-0"



**1 DOMESTIC WATER & GAS RISERS - PLUMBING**  
1/4" = 1'-0"



**PROPRIETARY INFORMATION NOTICE:**  
THESE PROTOTYPICAL DOCUMENTS MAY REQUIRE REVISIONS TO CONFORM TO LOCAL, STATE, AND FEDERAL CODES, ORDINANCES OR OTHER CONDITIONS. THE DESIGN CONCEPTS EMBODIED IN THESE DOCUMENTS ARE SPECIFICALLY FOR THIS PROJECT. INFORMATION CONTAINED HEREIN REMAINS THE SOLE PROPERTY OF ARBY'S RESTAURANT GROUP, IS CONFIDENTIAL AND PROPRIETARY AND IS NOT TO BE COPIED, REPRODUCED, DISCLOSED OR OTHERWISE TRANSFERRED TO OTHER PARTIES IN ANY FORM WHATSOEVER WITHOUT THE EXPRESS WRITTEN CONSENT OF ARBY'S RESTAURANT GROUP.



**ARBY'S RESTAURANT GROUP**  
INSPIRE DUAL REGULAR 40 - STANDARD  
1632 AR-25 BYPASS  
HEBER SPRINGS, AR 72543  
FOR  
RB AMERICAN GROUP, LLC  
6200 OAK TREE BLVD., SUITE 250, INDEPENDENCE, OHIO 44131

PROJECT NUMBER:	
ISSUE	DATE
PRELIMINARY	
PERMIT	
BID	
REVISION	

ISOMETRICS  
PLUMBING

SHEET: