

CORNER RECORD

Agency Index

BK 106 PG 66

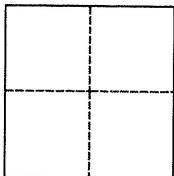
Document Number CR 10823

City of CASTRO VALLEY

County of ALAMEDA

, California

Brief Legal Description VR23R6 (SUMMIT COURT NORTH OF ELROD DRIVE)

CORNER TYPE**COORDINATES (Optional)**

Government Corner ☒ Control
Meander ☐ Property
Rancho ☐ Other

N. _____ E. _____

Elevation _____

Units Metric ☐ U.S. Survey Foot ☒

Horizontal Datum _____

Zone _____ Epoch Date _____

Vertical Datum _____

☐ Complies with Public Resources Code §§8801-8819☐ Complies with Public Resources Code §§8890-8902

Date of Survey 09/28/2017

PLS Act Ref.:

☒ 8765(d)☐ 8771☐ 8773☐ Other:Corner/
Monument:☐ Left as found☐ Established☐ Rebuilt☐ Pre-Construction☐ Found and tagged☐ Reestablished☐ Referenced☒ Post-Construction

Narrative of corner identified and monument as found, set, reset, replaced, or removed:

☒ See sheet #2 for description(s):

MON WELL LID WAS DOWN 1" IN AC. FOUND 5/16" BRASS PIN FOUND IN CONCRETE FOR COUNTY MON IN MON WELL, DOWN 9", FOUND FOUR CUT "X" REFERENCES AND TIE TO WS34S7 PER CORNER RECORD CR 10537 AND AS SHOWN ON SHEET 2.

SURVEYOR'S STATEMENT

This Corner Record was prepared by me or under my direction in conformance with

the Professional Land Surveyors' Act on NOVEMBER 9, 2017

Signed James N. Landrum P.L.S. or P.C.E. No. LS 5837**COUNTY SURVEYOR'S STATEMENT**

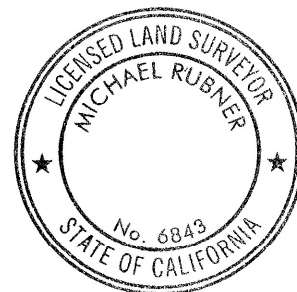
This Corner Record was received 13 NOVEMBER 2017

and examined and filed 10 APRIL 2018

Signed Michael Rubner P.L.S. or P.C.E. No. 6843

Title COUNTY SURVEYOR

County Surveyor's Comment

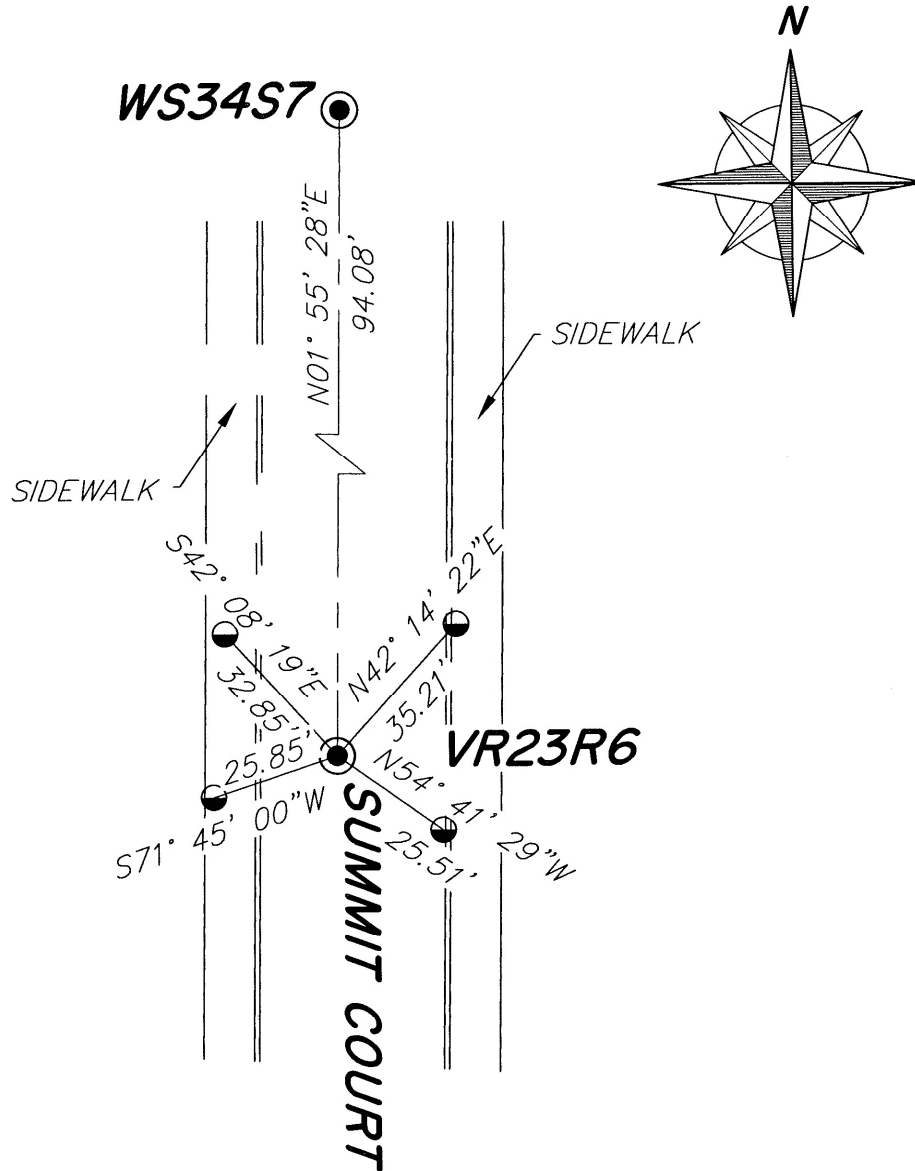


SPEC 2322

(PRE-CONSTRUCTION CR 10537)

VR23R6

NO SCALE

**LEGEND**

● FOUND ALAMEDA COUNTY MONUMENT
AS NOTED ON SHEET 1

◐ FOUND CUT "X" UNLESS
OTHERWISE SHOWN

AA##A# ALAMEDA COUNTY MONUMENT ID

NOTE THAT BEARINGS ARE
APPROXIMATE AND ARE TO
BE USED FOR ANGLE
CALCULATIONS ONLY.