

#### BASIS OF BEARINGS:

The bearing (N39°48'E.) as used for the line between Lots 3 & 4 of "The Partition of the Skuse Tract" "F" of Maps at page 47 is used as the basis of bearings for this survey.

#### NOTE:

All distances and dimensions are in feet and decimals thereof.

- Indicates iron pipe found.
- " " " " Set.

#### SURVEYOR'S CERTIFICATE:

This map correctly represents a survey made by me or under my direction in conformance with the requirements of Chapter 15 of Division 3 of the Business and Professions Code at the request of H.W. Hoeptner in June 1960.

Edward J. Stafford  
R.C.E. 688.

#### COUNTY SURVEYOR'S CERTIFICATE:

This map has been examined for conformance with the requirements of Chapter 15 of Division 3 of the Business and Professions Code this 11<sup>th</sup> day of July 1960.

James T. Pott,  
County Surveyor.

By Joseph R. Swearing  
Deputy.

1843404

#### RECORDER'S CERTIFICATE:

Filed for record this 12<sup>th</sup> day of July 1960 at 4:08 P.M. in Book 123 of Maps at Page 2 at the request of E. S. Stafford.

#500

Paul R. Teilh  
County Recorder.

By E. B. O'Brien  
Deputy.

#### RECORD OF SURVEY FOR

H.W. HOEPTNER & R.H. OSBORN

OF

LANDS THAT ARE A PORTION OF LOT 4 OF  
"THE PARTITION OF THE SKUSE TRACT."  
"F" MAPS 47 SANTA CLARA COUNTY CALI-  
FORNIA RECORDS

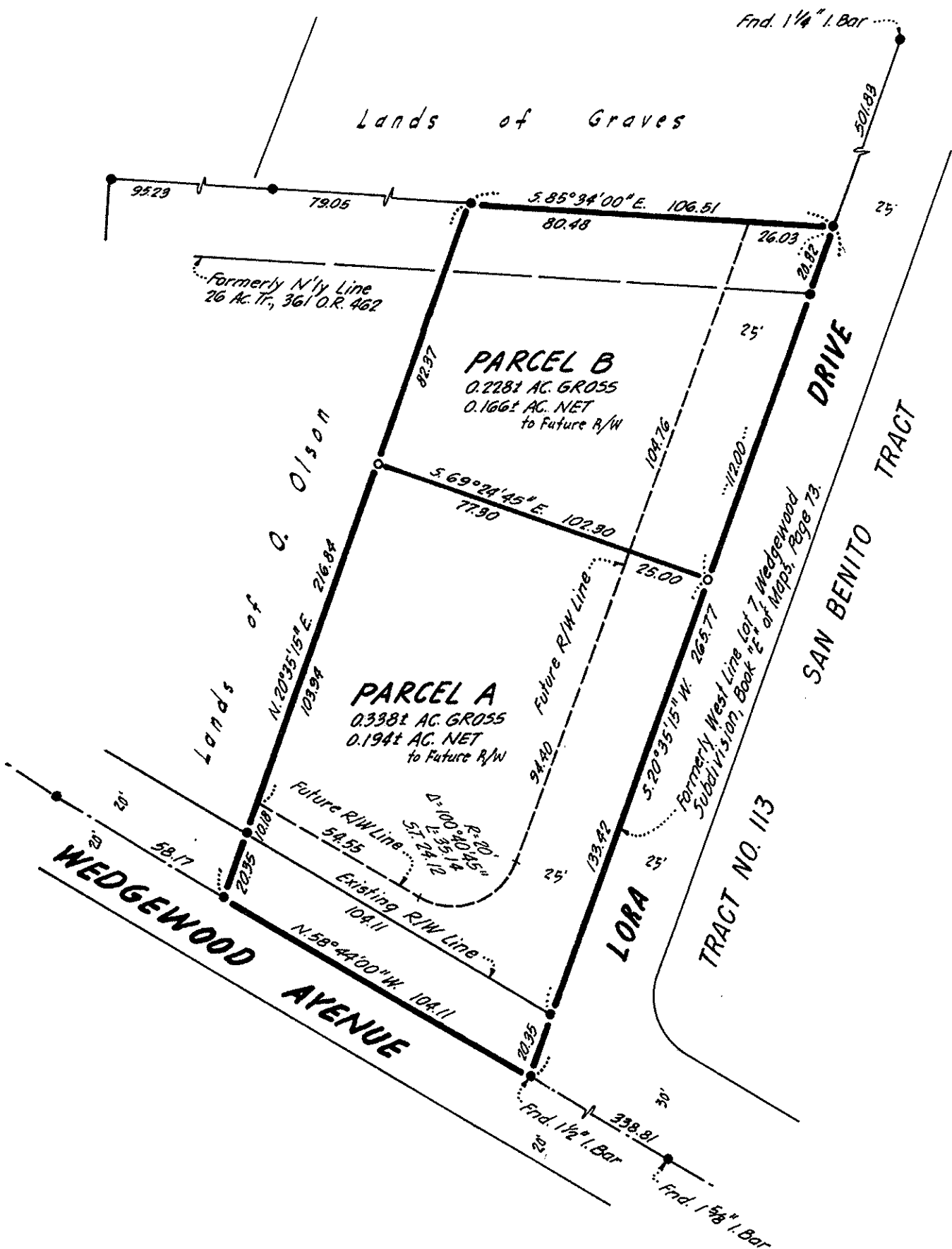
Scale 1"=50 feet. June, 1960.

ENGINEERING OFFICE OF  
L. CEDRIC MACABEE  
CONSULTING ENGINEER

SAN JOSE

CALIFORNIA

57082



#### LEGEND

- Indicates 3/4" Iron Pipe monument found, unless noted otherwise.
  - Indicates 1" Iron Pipe monument set.
- All distances and dimensions are shown in feet and decimals thereof.

#### SURVEYOR'S CERTIFICATE

This map correctly represents a survey made by me or under my direction in conformance with the requirements of Chapter 15 of Division 3 of the Business and Professions Code at the request of Loren Olson in July, 1960.

George S. Nolte  
R.C.E. 7595

#### COUNTY SURVEYOR'S CERTIFICATE

This map has been examined for conformance with the requirements of Chapter 15 of Division 3 of the Business and Professions Code this 13<sup>th</sup> day of July 1960.

JAMES T. POTT, County Surveyor

by Deputy Joseph R. Swearing

#### RECORDER'S CERTIFICATE

File No. 1843404 Fee #500 Pd.  
Filed for record this 14<sup>th</sup> day of July 1960 at 12:51 P.M. in Book 123 of Maps at page 2 at the request of George S. Nolte.

PAUL R. TEILH, County Recorder

by Deputy E. B. O'Brien

#### BASIS OF BEARINGS

The bearing N.58°44'00"W. for the centerline of Wedgewood Avenue as shown on that certain map entitled "Portion Lot C, Lot 3, C.H. Parr Partition" recorded in Book 91 of Maps at Page 23 Santa Clara County Records, was taken as the basis of bearings shown on this map.

#### RECORD OF SURVEY

FOR LOREN OLSON

PORTION -- LOT C, LOT 3 -- C.H. PARR PARTITION

SANTA CLARA COUNTY, CALIFORNIA

SCALE: 1"=40'

JULY, 1960

GEORGE S. NOLTE

CIVIL ENGINEER...LAND SURVEYOR

PALO ALTO-SANTA CLARA-WALNUT CREEK-SAN RAFAEL