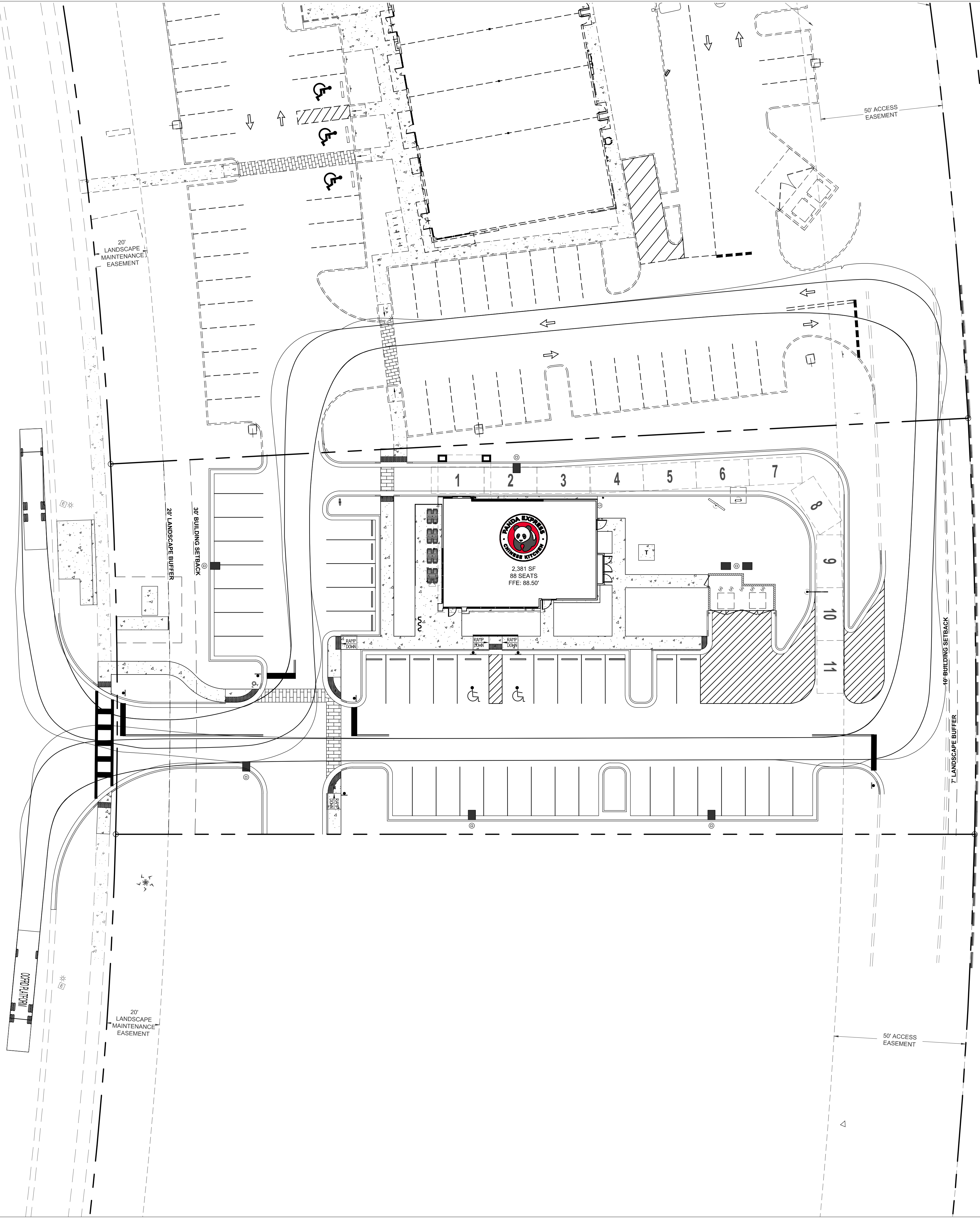
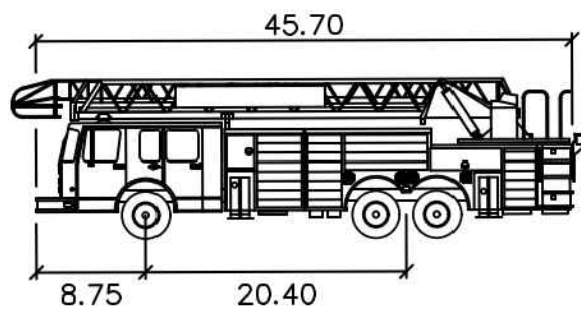


LANDSTAR BOULEVARD
RIGHT OF WAY VARIES
P.B. 26, PG. 88-90



GENERAL NOTES

ORANGE COUNTY FIRE RESCUE DEPARTMENT PLATFORM TRUCK



OCFRD Platform

Width	: 8.33'
Track	: 8.33'
Lock to Lock Time	: 6.0
Steering Angle	: 44.2°
Min. Centerline Radius	: 29'



PANDA EXPRESS, INC.

1683 WALNUT GROVE AVE.
ROSEMead, CALIFORNIA 91770

TELEPHONE: 626.799.9898
FACSIMILE: 626.372.8268

All ideas, designs, arrangement and plans indicated or represented by this drawing are the property of Panda Express Inc. and were created for use on this specific project. None of these ideas, designs, arrangements or plans may be used by or disclosed to any person, firm, or corporation without the written permission of Panda Express Inc.

REVISIONS:

ISSUE DATE:

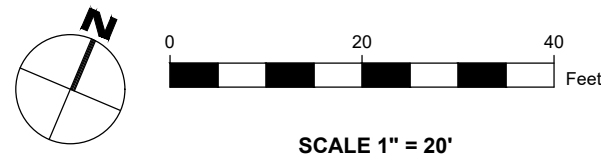
PLAN CHECK	02/08/2021
BID	06/25/2021
CONSTRUCTION	XX-XX-XX

DRAWN BY: INGENIUM

PANDA PROJECT #: D8016
PANDA STORE #: 3499
CIVIL PROJECT #: 200049



24-HOUR CONTACT:
JOE CELENTO
(912) 272-4811



TRUCK TURNING
EXHIBIT
C03.4

TRUE WARM & WELCOME 2300