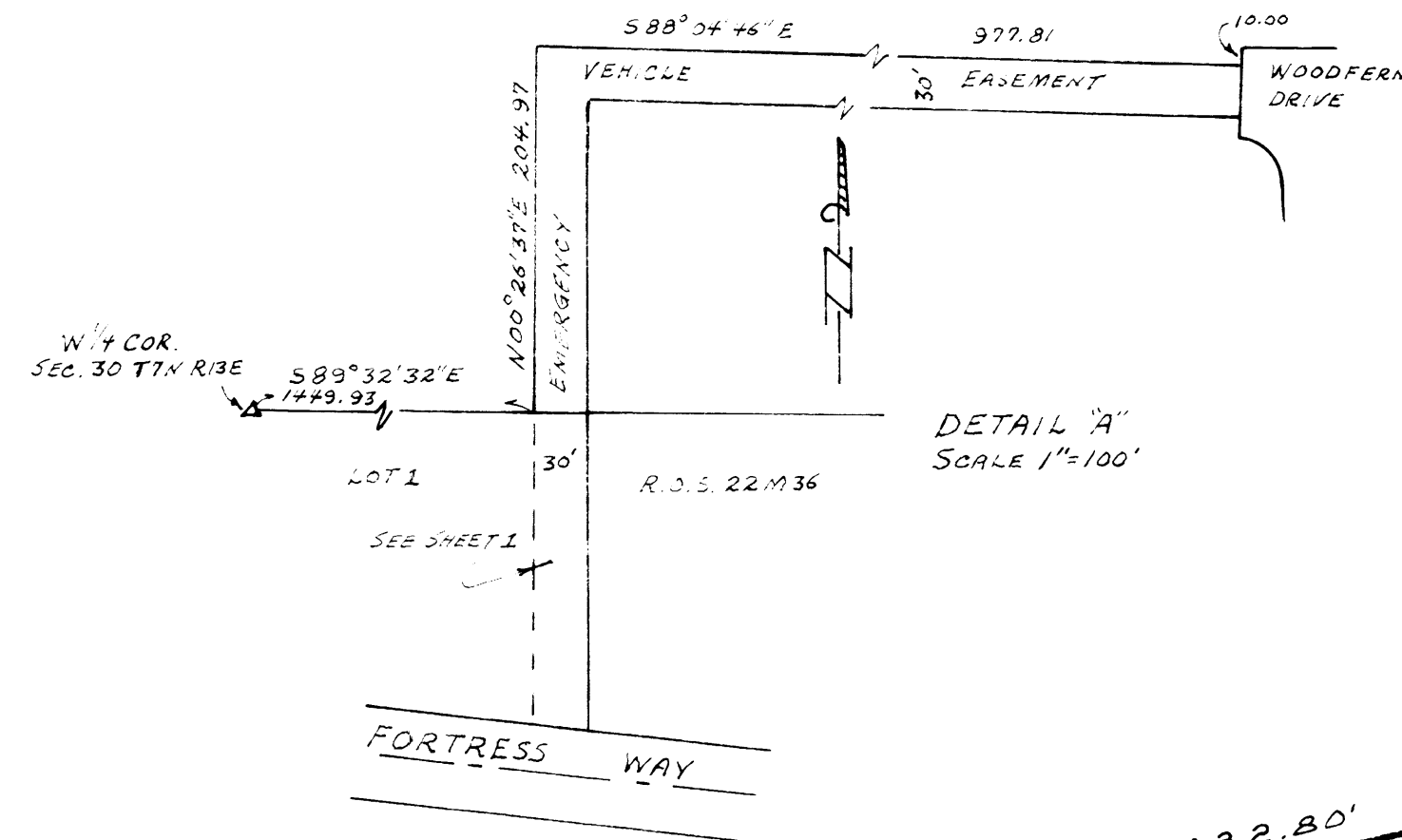
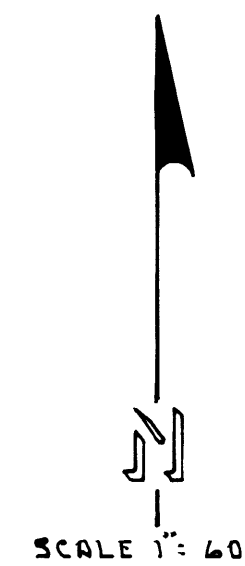


NOTES & LEGEND

Δ DENOTES EXISTING MONUMENTS FOUND AND USED ON THIS SURVEY.
 ○ DENOTES 3/4" RE-BAR TAGGED L.S. 3488 SET ON THIS SURVEY.
 ALL LOT CORNERS SHOWN HEREON, UNLESS OTHERWISE INDICATED, ARE MARKED BY A 1/2" PIPE, TAGGED L.S. 3488.
 — — — — — DENOTES PUBLIC UTILITY EASEMENT LINE 5 FEET FROM ALL SIDE LOT LINES AND 15 FEET FROM REAR LOT LINE AND THE SUBDIVISION BOUNDARY.
 THE BASIS OF BEARING IS THE NORTH LINE PER R.O.S. 8-M-29, BEARING S. 89° 32' 32" E.

HEI VIEW ESTATES UNIT I

A PORTION OF SECTION 30 T1N, R13E M.D.B. & M., COUNTY OF AMADOR
 STATE OF CALIFORNIA



M. J. VAN DE HEI
 238-OR-01
 R.O.S.
 8-M-29

