

CORNER RECORD

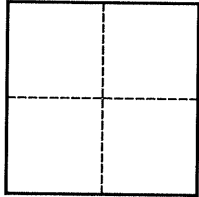
Agency Index

BK 138 PG 65

Document Number

C.R. 15222City of BERKELEYCounty of ALAMEDA

, California

Brief Legal Description COUNTY OF ALAMEDA MONUMENT SL88J1**CORNER TYPE****COORDINATES (OPTIONAL)**

- ☐ Government Corner ☐ Control
☐ Meander ☒ Property
☐ Rancho ☐ Other

Date of Survey FEBRUARY 11, 2021

N. _____ E. _____

Elevation _____

Units ☐ Metric ☒ U.S. Survey Foot

Horizontal Datum _____

Zone _____ Epoch Date _____

Vertical Datum _____

☐ Complies with Public Resources Code §§8801-8819☐ Complies with Public Resources Code §§8890-8902

PLS Act Ref.:

☐ 8765(d)☒ 8771☐ 8773☐ Other:

Corner/

☒ Left as found☐ Established☐ Rebuilt☒ Pre-Construction

Monument:

☐ Found and tagged☐ Reestablished☒ Referenced☐ Post-Construction

Narrative of corner identified and monument as found, set, reset, replaced, or removed:

☒ See sheet #2 for description(s):

SEE REFERENCE POINTS ON PAGE 2, USED FOR PERPETUATION THROUGH CONSTRUCTION. NOTE: NO WARRANTY EXPRESSED OR IMPLIED AS TO THE MONUMENTS DEPICTED HEREON HAVING BEEN SET IN THE CORRECT LOCATION BY THE ORIGINAL SURVEYOR OR ENGINEER. ELEVATIONS DEPICTED HEREON ARE ASSUMED, IN TERMS THE ELEVATION OF B2016 (EL= 1054.47') AS DEPICTED ON C.R. 4909, AND MEASURED WITH ROUNDS IN FACE I AND II WITH A 1" TRIMBLE ROBOTIC TOTAL STATION.

SURVEYOR'S STATEMENT

This Corner Record was prepared by me or under my direction in conformance with

the Professional Land Surveyors' Act on MAY 18, 2021

Signed

P.L.S. or R.C.E. No. 8960**COUNTY SURVEYOR'S STATEMENT**

This Corner Record was received _____

and examined and filed _____

MAY 28 2021

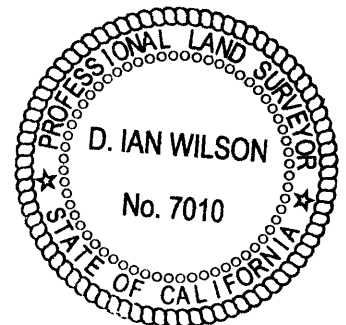
Signed

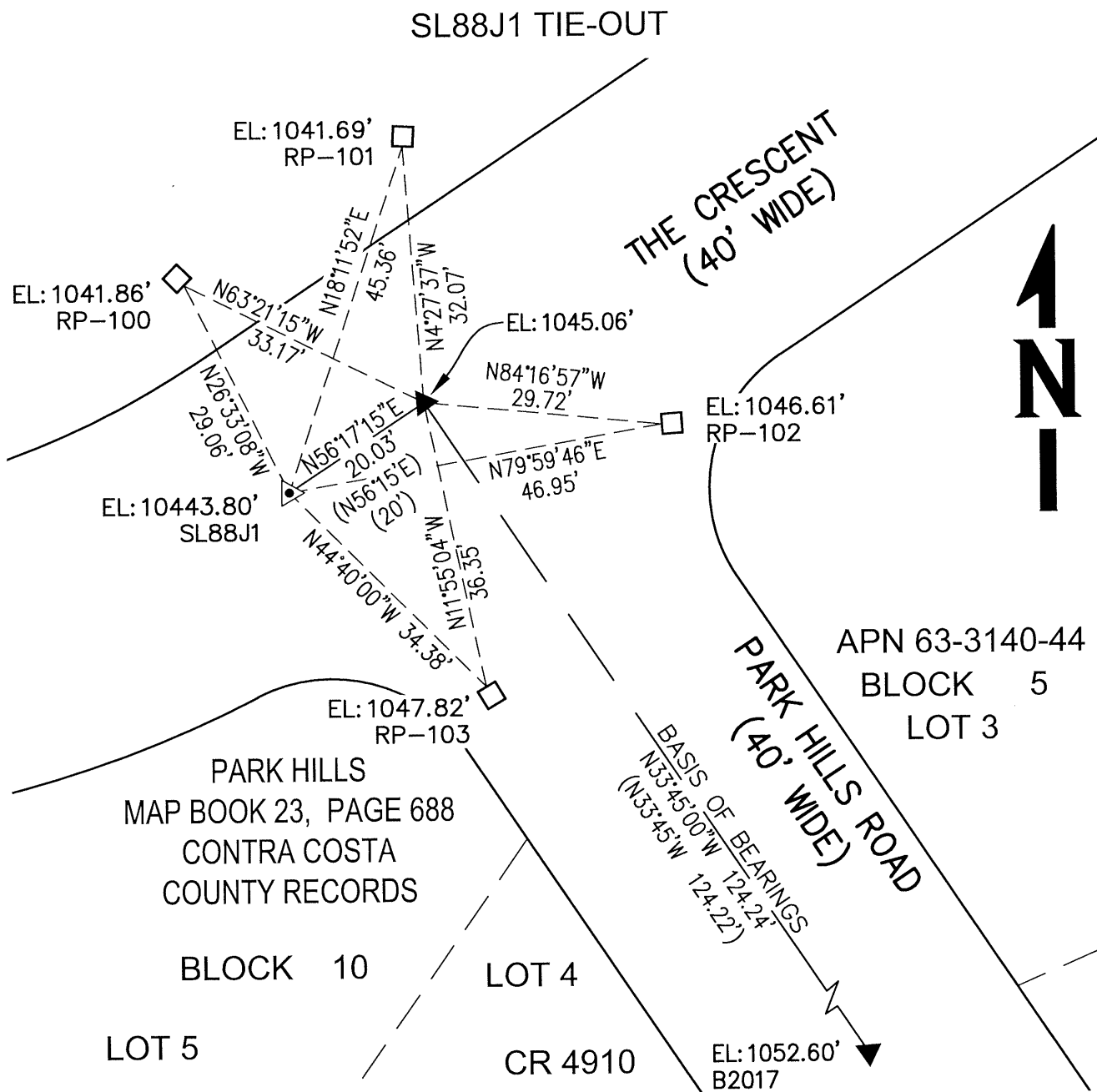
P.L.S. or R.C.E. No. 7010

Title

ALAMEDA COUNTY SURVEYOR

County Surveyor's Comment



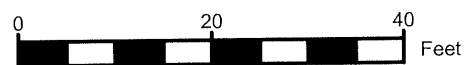


BASIS OF BEARINGS

THE LINE BETWEEN CITY OF BERKELEY MONUMENTS SHOWN
ON PARK HILLS ROAD
TAKEN AS N 33°45'00" W.

LEGEND:

- ▲ FOUND CITY OF BERKELEY 2" PUNCHED BRASS DISC STAMPED "CITY OF BEREKLEY UNLAWFUL TO DEFACE" MONUMENT IN WELL.
- △ FOUND IRON PIN IN CONCRETE IN COUNTY OF ALAMEDA MONUMENT WELL.
- SET NAIL AND DISC STAMPED "RP LS 8960".
- RP REFERENCE POINT.
- () RECORD INFORMATION PER PARK HILLS, FILED FEBRUARY 21, 1939, MAP BOOK 23, PAGE 688, CONTRA COSTA COUNTY RECORDS.



SCALE: 1"=20'