

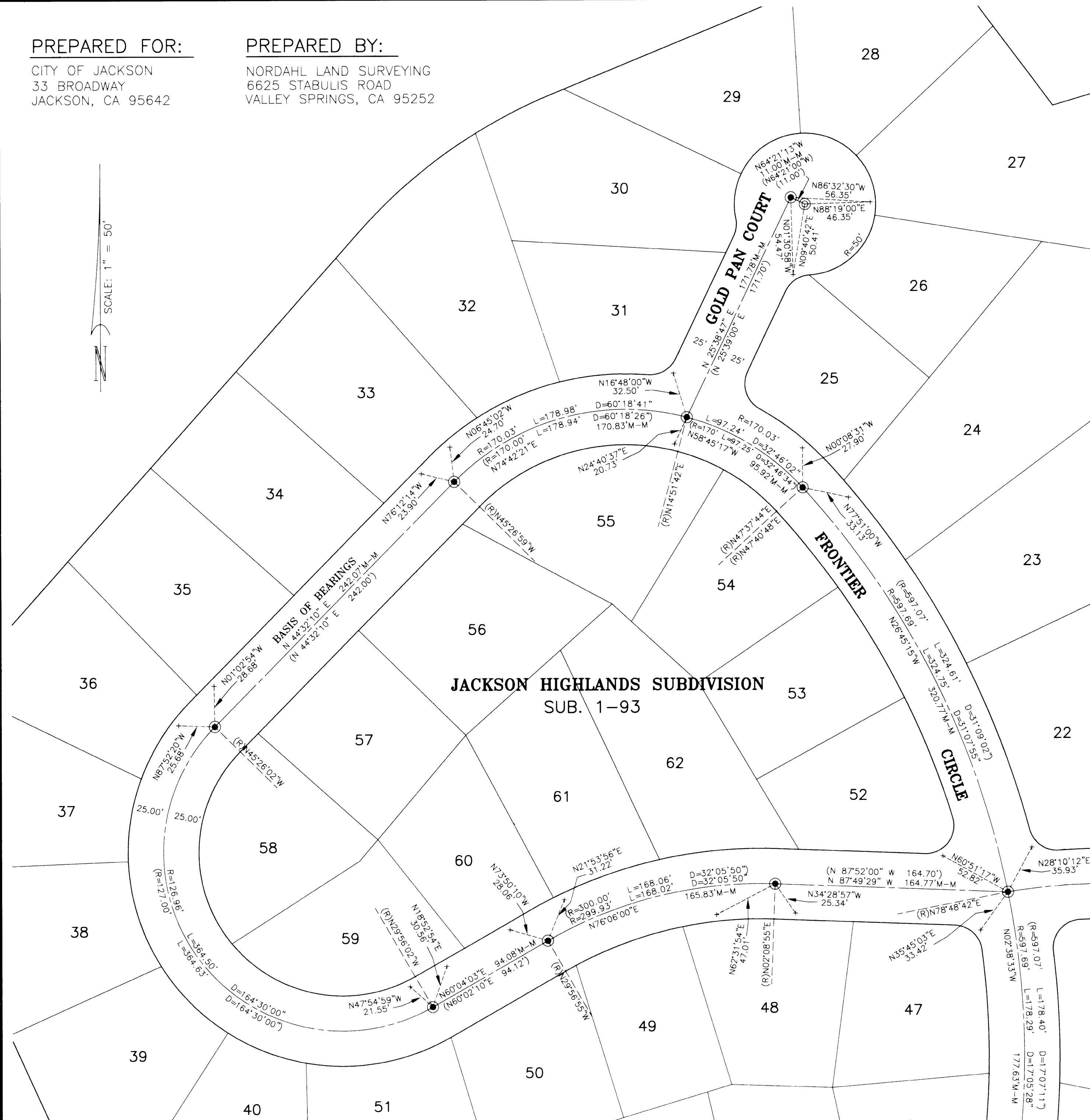
## PREPARED FOR:

CITY OF JACKSON  
33 BROADWAY  
JACKSON, CA 95642

## PREPARED BY:

NORDAHL LAND SURVEYING  
6625 STABULIS ROAD  
VALLEY SPRINGS, CA 95252

SCALE: 1" = 50'



# RECORD OF SURVEY

FOR THE CITY OF JACKSON

STREET MONUMENT REPLACEMENT OF JACKSON HIGHLANDS SUBDIVISION, BEING A PORTION OF THE N.W. QUARTER OF THE S.W. QUARTER OF SECTION 27, T. 6 N., R. 11 E., M.D.M.

IN THE CITY OF JACKSON

AMADOR COUNTY

SCALE: 1" = 50'

CALIFORNIA

DECEMBER 2000

## SURVEYOR'S STATEMENT:

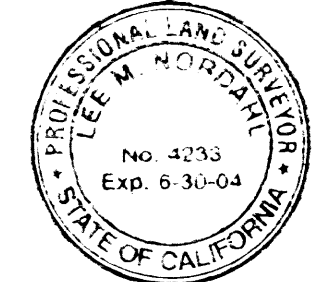
THIS MAP CORRECTLY REPRESENTS A SURVEY MADE BY ME OR UNDER MY DIRECTION IN CONFORMANCE WITH THE REQUIREMENTS OF THE LAND SURVEYOR'S ACT AT THE REQUEST OF THE CITY OF JACKSON IN NOVEMBER OF 2000.

*Lee M. Nordahl*

12-22-00

LEE M. NORDAHL, L.S. 4233  
EXPIRES: 6-30-2004

DATE:

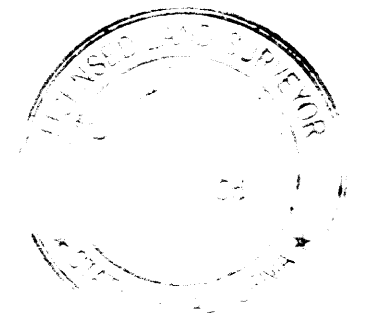


## COUNTY SURVEYOR'S STATEMENT:

THIS MAP HAS BEEN EXAMINED IN ACCORDANCE WITH SECTION 8766 OF THE LAND SURVEYOR'S ACT ON THIS 22 DAY OF December, 2000.

*C. Lee DeLange*

C. LEE DeLANGE, P.C.S. 4066  
AMADOR COUNTY SURVEYOR  
LICENSE EXPIRES 6-30-2004



## RECORDER'S STATEMENT:

FILED THIS 29<sup>th</sup> DAY OF December, 2000, AT 4:27 PM  
IN BOOK 53 OF MAPS AND PLATS AT PAGE 66 + 67  
AT THE REQUEST OF THE AMADOR COUNTY SURVEYOR.

FEE: No Fee INSTRUMENT No. 2000-0011888

*Sheldon D. Johnson*

SHELDON D. JOHNSON  
AMADOR COUNTY RECORDER

BY: *DeLange*  
DEPUTY

## BASIS OF BEARINGS:

THE LINE BETWEEN THE TWO FOUND STREET MONUMENTS ON THE CENTERLINE OF PIONEER CIRCLE, AS SHOWN ON SHEET TWO OF THE FINAL MAP OF JACKSON HIGHLANDS SUBDIVISION, FILED FEBRUARY 1, 1966 IN BOOK 1 OF SUBDIVISIONS, AT PAGE 93, AND TAKEN AS N 44°32'10" E, IS THE BASIS OF BEARINGS SHOWN HEREON.

## LEGEND:

- FOUND CONCRETE MONUMENT IN MONUMENT BOX AT CENTERLINE OF STREETS OF JACKSON HIGHLANDS SUBDIVISION. REFERENCED MONUMENT POSITIONS TO CHISLED CROSSES ON CURB. AFTER PAVEMENT RECONSTRUCTION, SET RAILROAD SPIKE BACK TO THE ORIGINAL STREET MONUMENT POSITION.
- ⊙ SET RAILROAD SPIKE AT CENTERLINE OF STREET.
- FOUND IRON PIPE, TAGGED L.S. 2423, AS NOTED, AS PER SUB. 1-93.
- + SET CHISLED CROSS ON CONCRETE CURB.
- M-M MONUMENT TO MONUMENT MEASUREMENT.
- ( ) RECORD DATA AS PER SUB. 1-93.

SHEET 1 OF 2