

All ideas, designs, arrangement and plans indicated or represented by this drawing are the property of Panda Express Inc. and were created for use on this specific project. None of these ideas, designs, arrangements or plans may be used by or disclosed to any person, firm, or corporation without the written permission of Panda Express Inc.

REVISIONS:

ISSUE DATE:

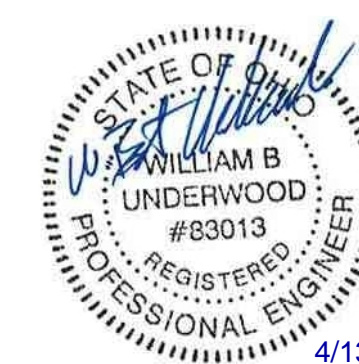
1ST	SITE PLAN REVIEW	02-16-2
2ND	PERMIT/BID SET	04-09-2

DRAWN BY: KB

PANDA PROJECT #: S8-22-D8193

PANDA STORE #:

ARCH PROJECT #: 20044.021



4/13/20



8813 PENROSE LANE, SUITE 400
LENEXA, KS 66219
ph: 913.649.8181 • fx: 913.649.1275

PANDA EXPRESS

TRUE WARM & WELCOME
1485 MAIN ST.
HAMILTON, OH 45013



INC.
consulting engineer
101 Falls Park Dr
Suite 601
Greenville, SC 29601
(864) 271-8869
Fax (864) 233-5140
www.brittpeters.com
BPA Job No. 210196

S-100

FOUNDATION PLAN

Scale: 1/4"=1'-0"	S-100
-------------------	-------

TRUE WARM & WELCOME 2300 R5

PLAN NOTES

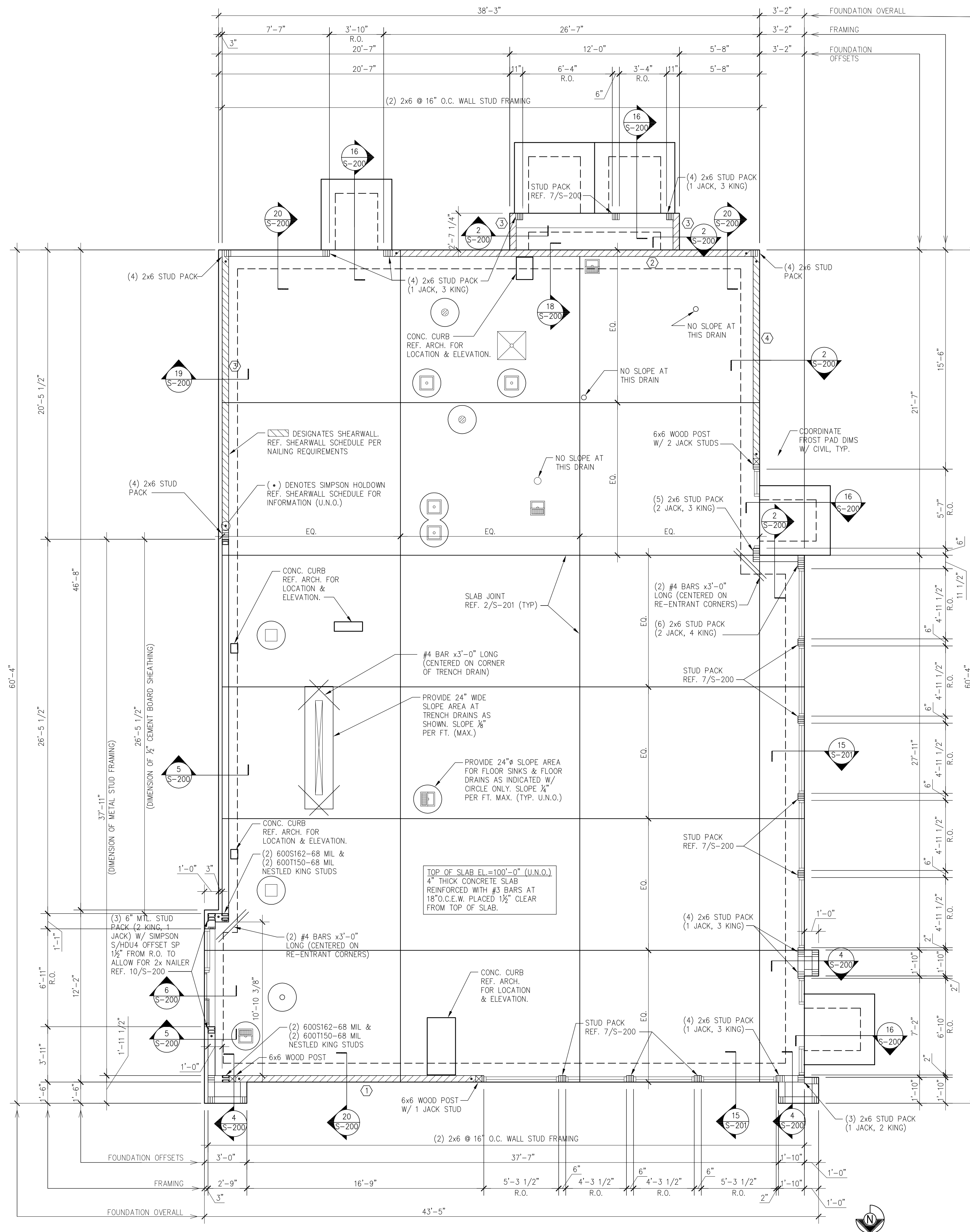
1. REF. SHEET S-001 FOR STRUCTURAL NOTES AND SPECIAL INSPECTIONS.
2. REF. 3/5-201 FOR TYPICAL PIPE AND TRENCH DETAIL AS REQUIRED.
3. REF. 4/5-201 FOR TYPICAL SILL PLATE BOLT DETAIL AS REQUIRED.
4. REF. 5/5-201 FOR TYPICAL STEP FOOTING DETAIL AS REQUIRED.
5. REF. 6/5-201 FOR TYPICAL GRADE BEAM STIRRUP DETAIL AS REQUIRED.
6. REF. 7/5-201 FOR TYPICAL REINFORCING BAR DETAIL AS REQUIRED.
7. REF. 8/5-201 FOR TYPICAL CORNER BAR DETAIL AS REQUIRED.
8. REF. 17/5-200 FOR TYPICAL NON-BEARING WALL CONNECTION AT SLAB AS REQUIRED.
9. REF. 3/4-301 FOR TYPICAL FRAMING NOTICES DETAIL AS REQUIRED.
10. REF. 4/5-301 FOR TYPICAL WALL FRAMING DETAILS AS REQUIRED.
11. REF. 17/5-200 FOR TYPICAL TRASH ENCLOSURE DETAIL AS REQUIRED.
12. REF. 9/5-201 FOR TYPICAL CURB DETAIL AS REQUIRED.
13. REF. 15/5-200 FOR TYPICAL LIGHT POLE BASE DETAIL AS REQUIRED.
14. REF. 12/5-200 AND 16/5-200 FOR TYPICAL UMBRELLA FOOTING AS REQUIRED.
15. REF. 10/5-201 FOR TYPICAL TRENCH DRAIN DETAIL AS REQUIRED.
16. REF. 3/4-301 FOR TYPICAL DETAIL NOTES AS REQUIRED.
17. COORDINATE WITH ARCHITECTURAL, MECHANICAL AND PLUMBING DRAWINGS FOR LOCATIONS OF ALL DEPRESSIONS, CURBS, DRAINS, ETC. IN FLOOR SLAB.

SHEARWALL SCHEDULE				
TYPE	NAIL SPACING	HOLDOWN	ANCHOR BOLTS	
①	10d @ 4" O.C.	HDU8-SDS2.5	¾" @ 32" O.C.	
②	10d @ 6" O.C.	HDU5-SDS2.5	¾" @ 32" O.C.	
③	10d @ 6" O.C.	HDU5-SDS2.5	¾" @ 32" O.C.	
④	10d @ 6" O.C.	HDU5-SDS2.5	¾" @ 32" O.C.	

 - DESIGNATES SHEARWALL TYPE

NOTES:

2. USE 10d COMMON NAILS.
3. NAIL PANEL FACES @ 12" O.C.
3. USE 1/2" PLYWOOD.
4. STAGGER PLYWOOD JOINT AND SILL PLATE NAILING.
5. FRAMING MEMBERS OR BLOCKING SHALL BE PROVIDED AT THE EDGES OF ALL SHEET MATERIALS.
6. REFER TO 9/5-200 FOR HOLD DOWN ANCHOR EMBEDMENT.
7. HOLD DOWN ANCHORS MUST BE TIED IN PLACE PRIOR TO FOUNDATION INSPECTION.
8. FRAMING AT ADJOINING PANEL EDGES SHALL BE 3 INCH NOMINAL OR LARGER AND NAILS SHALL BE STAGGERED WHERE NAILS ARE SPACED AT 12" O.C. OR ARE ON EACH FACE.



FOUNDATION NOTES

1

Scale: NO SCALE

S-100

FOUNDATION PLAN

	A
--	---

Scale: 1/4"=1'-0"

"	S-100
---	-------