

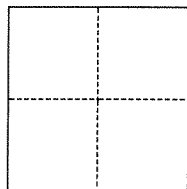
CORNER RECORD

Agency Index

BK 143 PG 78

Document Number

CR 15789

City of Unincorporated Eden Township County of Alameda, CaliforniaBrief Legal Description Monument on Greenhills Avenue between Lakeridge Road & Meadowood Road**CORNER TYPE****COORDINATES (Optional)**

- ☐ Government Corner ☒ Control
☐ Meander ☐ Property
☐ Rancho ☐ Other

Date of Survey September 20, 2021

N. _____ E. _____

Elevation _____

Units

☐ Metric☒ U.S. Survey Foot

Horizontal Datum _____

Zone _____

Epoch Date _____

Vertical Datum _____

☐ Complies with Public Resources Code §§8801-8819☐ Complies with Public Resources Code §§8890-8902

PLS Act Ref.:

☐ 8765(d)☒ 8771☐ 8773☐ Other:Corner/
Monument:☒ Left as found☐ Established☐ Rebuilt☒ Pre-Construction☐ Found and tagged☐ Reestablished☒ Referenced☐ Post-Construction

Narrative of corner identified and monument as found, set, reset, replaced, or removed:

☒ See sheet #2 for description(s):

Found 2" brass disc with punch in monument well. Set reference ties prior to construction.

Alameda County Monument ID #CP32C4

SURVEYOR'S STATEMENT

This Corner Record was prepared by me or under my direction in conformance with

the Professional Land Surveyors' Act on September 22, 2021

Signed

Dennis D. Baker

P.L.S. or R.C.E. No.

PLS 7947**COUNTY SURVEYOR'S STATEMENT**

This Corner Record was received _____

and examined and filed _____

JAN 3 6 2022

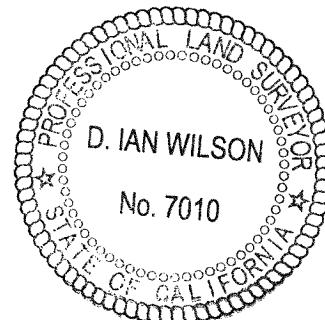
Signed

D. Ian Wilson

P.L.S. or R.C.E. No.

7010Title ALAMEDA COUNTY SURVEYOR

County Surveyor's Comment

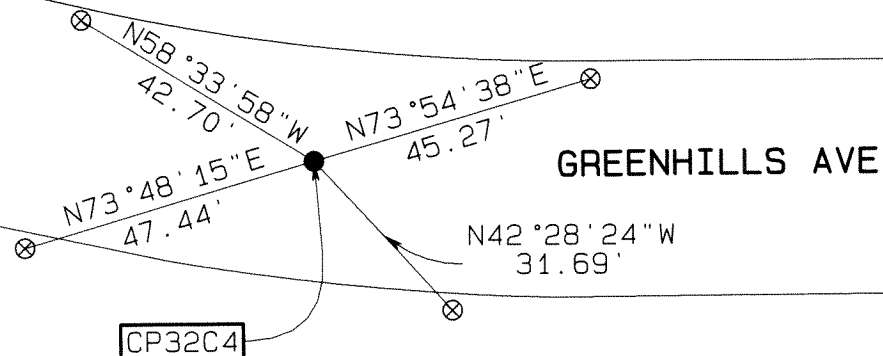


- FOUND 2" BRASS DISC
WITH PUNCH IN MONUMENT WELL
- ⊗ SET MAG NAIL & TAG (LS 7947)
IN CONCRETE CURB

**AA##A#**

ALAMEDA COUNTY MONUMENT ID

3652 GREENHILLS AVE
APN 84B-531-93



3651 GREENHILLS AVE
APN 84B-531-130

Prepared by:
CONSTRUCTION SURVEY, INC.
800 BERKELEY WAY, #201
BERKELEY, CA 94710

JOB NO. 210901
SCALE: 1"=30'
9/21/2021