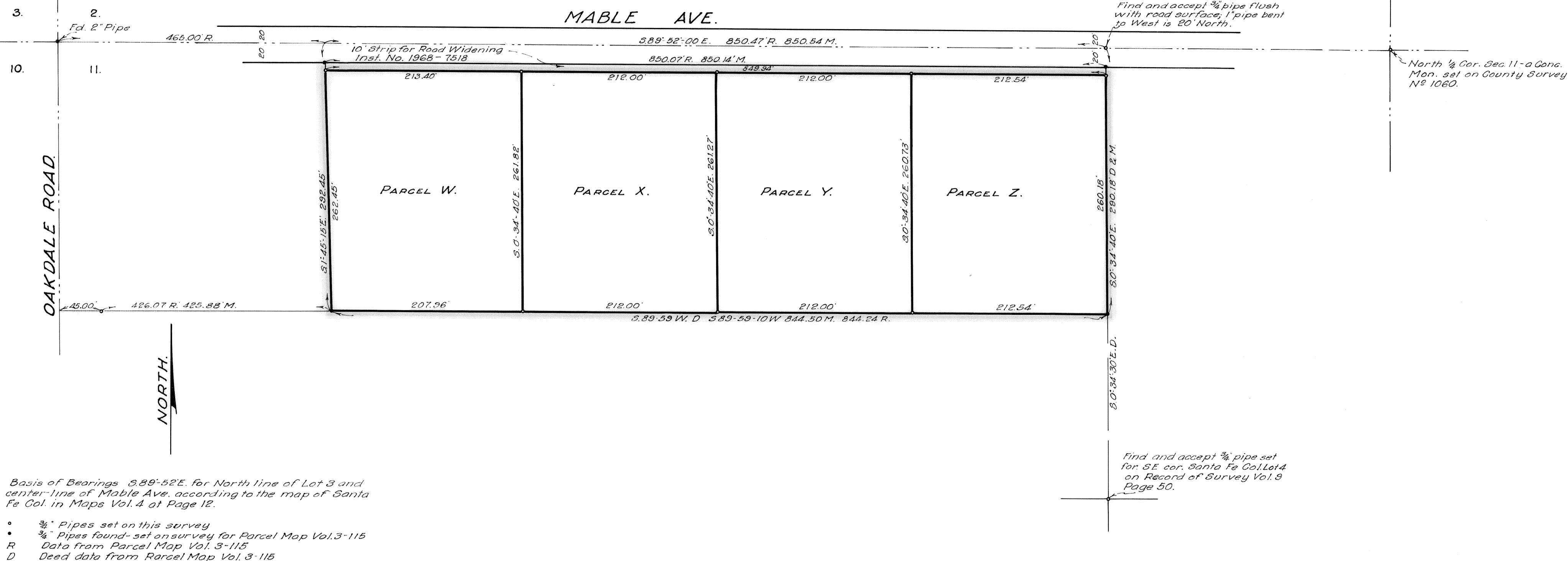


FILED FOR RECORD
This 14th day of March, 1968
At 5:15 P.M.
PARCEL MAPS Vol. 3, Pg. 23
At request of Co. Surveyor
Steve Nelson, Recorder.
By Roy E. Campbell Deputy
Inst. No. 8128
Fee \$5.00 Paid.

5 P.M. 23



This map has been examined this 14th day of MARCH, 1968
for conformance with the requirements of Section 11575 of
the Subdivision Map Act.

R. G. Barhite
County Surveyor.
By Roy E. Campbell Deputy

PARCEL MAP
PARCEL B OF A PORTION OF LOT 3 OF SANTA FE COLONY.
NW 1/4 OF SEC. 11. T.3 S., R. 9 E., M. D. B. & M.
SCALE: 1"=80' JAN 1968

This map was prepared by me and is based on a field survey in conformance with the requirements of the Subdivision Map Act at the request of ROY E. CAMPBELL, January 1968. I hereby certify that it conforms with the tentative map and the conditions of approval thereof; that all provisions of applicable state law and local ordinances have been complied with.

Wm. E. Deaton
Reg. Civil Engineer No. 6693.

Co. 2743

5 P.M. 23