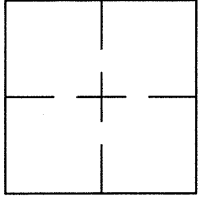


**CORNER RECORD**Document Number CR 8154City of OAKLANDCounty of ALAMEDA, CaliforniaBrief Legal Description WELL MONUMENT LOCATED WITHIN THE INTERSECTION OF HARRISON ST.  
AND 14TH STREET**CORNER RECORD**

Government Corner ☐ Control ☒  
 Meander ☐ Property ☐  
 Rancho ☐ Other ☐  
 Date of Survey 1/21/16

**COORDINATES  
(Optional)**

N. \_\_\_\_\_  
 E. \_\_\_\_\_  
 Zone \_\_\_\_\_ Datum \_\_\_\_\_  
 Elev. \_\_\_\_\_

**Corner** — Left as found ☒ Found and tagged ☐ Established ☐ Reestablished ☐ Rebuilt ☐

Identification and type of corner found: Evidence used to identify or procedure used to establish or reestablish the corner:  
FOUND PIN IN WELL MONUMENT.

AS SHOWN ON CITY OF OAKLAND MONUMENT MAP, PAGE 203.

CITY MONUMENT DESIGNATION NUMBER AT SUBJECT LOCATION CENTRAL B  
16

THIS POINT WAS FOUND IN GOOD CONDITION AFTER A CONSTRUCTION PROJECT  
IN THE VICINITY.

A description of the physical condition of the monument as found and as set or reset: \_\_\_\_\_

FOUND AND SET POINTS AS SHOWN ON PAGE 2.

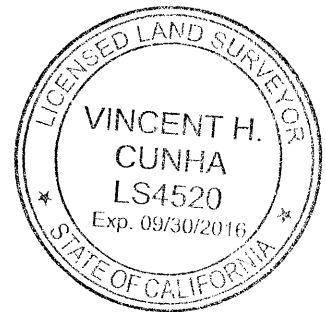
THESE TIES ARE FOR THE PURPOSE OF PERPETUATING THE FOUND MONUMENTATION.

NO CLAIM IS MADE AS TO THE RELATIONSHIP OF THE POINTS OR LINES SHOWN HEREON  
TO TRUE BOUNDARY LOCATIONS.

**SURVEYOR'S STATEMENT**

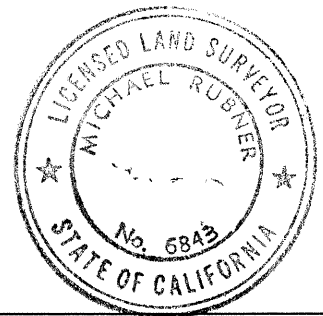
This Corner Record was prepared by me or under my direction in conformance with  
 the Land Surveyors' Act on FEBRUARY 12, 2016.

Signed VINCENT H. CUNHA L.S. Number LS 4520

**COUNTY SURVEYOR'S STATEMENT**

This Corner Record was received 7 MARCH 2016 and examined  
 and filed 30 MARCH 2016.

Signed Michael Rubner Title COUNTY SURVEYOR



**County Surveyor's Comment** \_\_\_\_\_

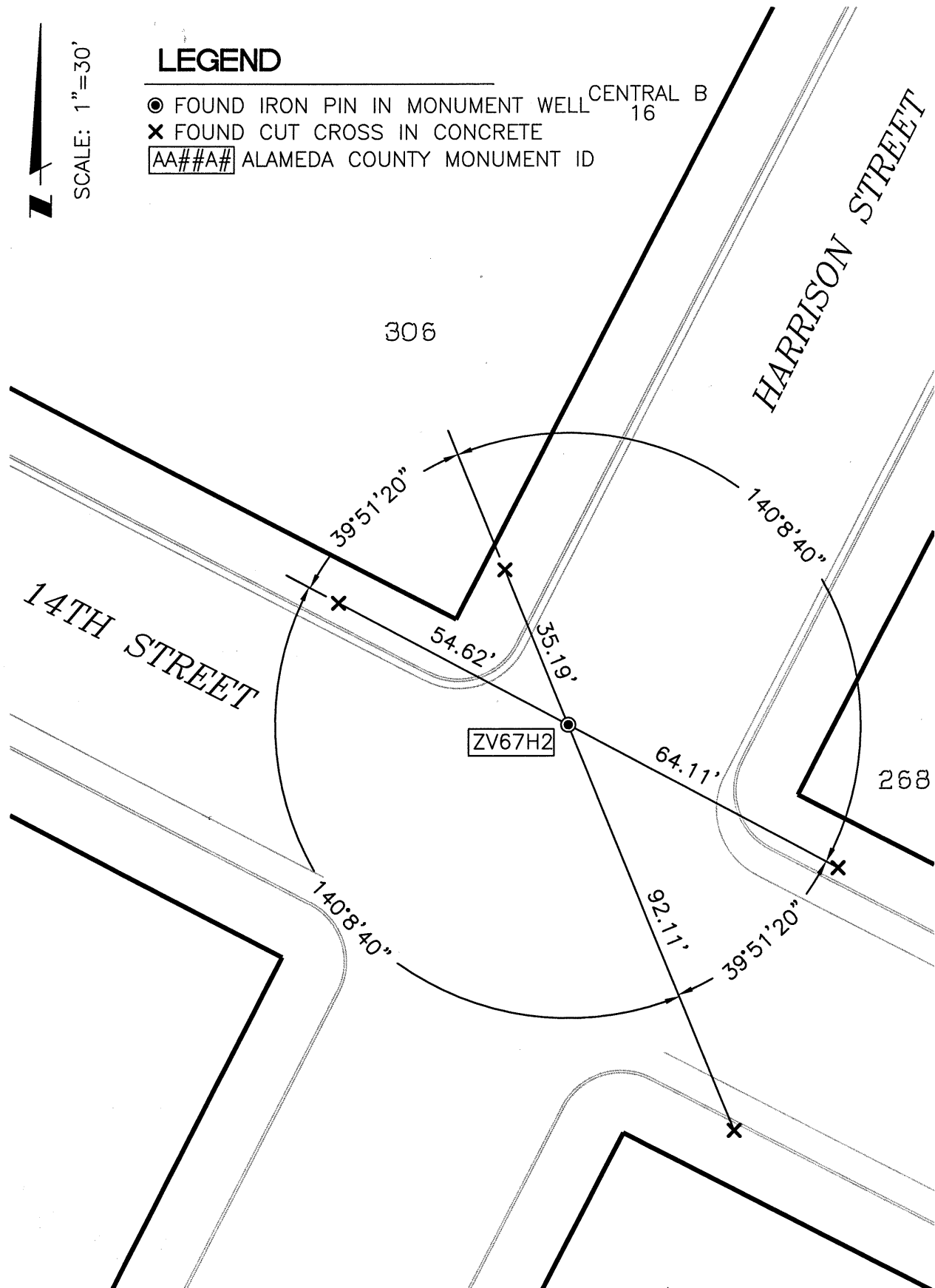
SEE CR 6897



SCALE: 1"=30'

## LEGEND

- FOUND IRON PIN IN MONUMENT WELL CENTRAL B 16
- ✕ FOUND CUT CROSS IN CONCRETE
- AA##A# ALAMEDA COUNTY MONUMENT ID



214127-Harrison-CR2