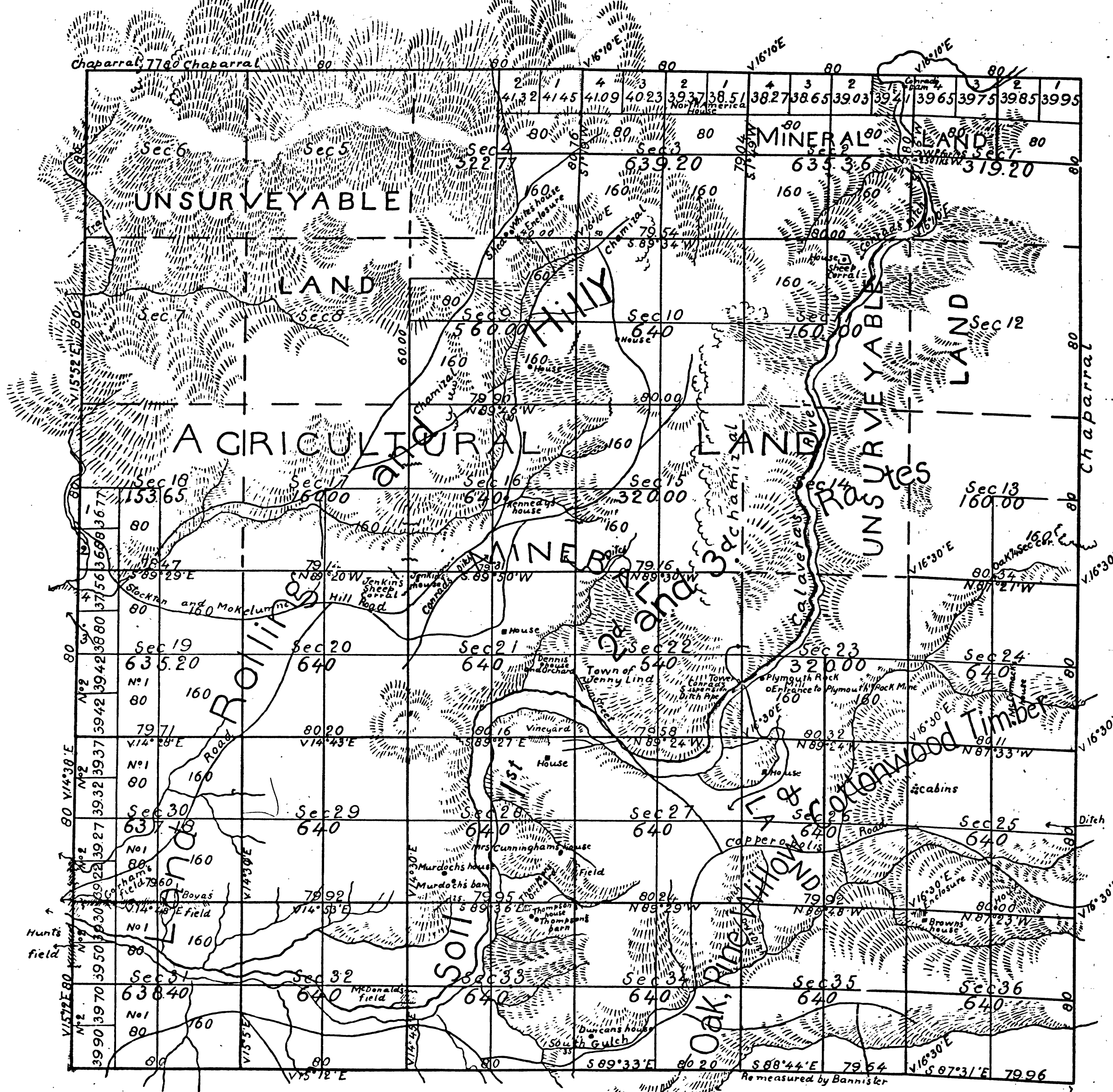


Township N°3 North Range N°10 East Mount Diablo Meridian



Aggregate Area of Public Land 15900.96 Acres
Estimated Unsurveyed Mountain Land 7087.82
Aggregate 22988.78

DEPARTMENT OF THE INTERIOR,
GENERAL LAND OFFICE,
Washington, D. C., July 16, 1897.
I hereby certify that this is a true copy
of the plat of official survey of the lands
to which it relates, on file in this office.

Alfred Bannister
Recorder, General Land Office.

Variation used by Bannister on lines not otherwise noted 16°20'E

Surveys Designated	By whom surveyed	Date of Contract	Amount of Surveys	When surveyed
Township lines colored red	J.S. Whiting	February 13 th 1855.		1855
Rest of Township lines	Fleming Amyx	September 30 th 1858		1859
Section lines colored red	J.S. Whiting	February 13 th 1855		1855
Rest of Section lines	Alfred Bannister	July 16 th 1870	36 mls 15chs 74 lks	Sept. 13 th 1870

The above Map of Township N°3 North, Range N°10 East, Mount Diablo Meridian, is strictly conformable to the field notes of the surveys thereof on file in this Office which have been examined and approved

Surveyor General's Office
San Francisco California
February 24th 1871

J. A. Harzenbergh