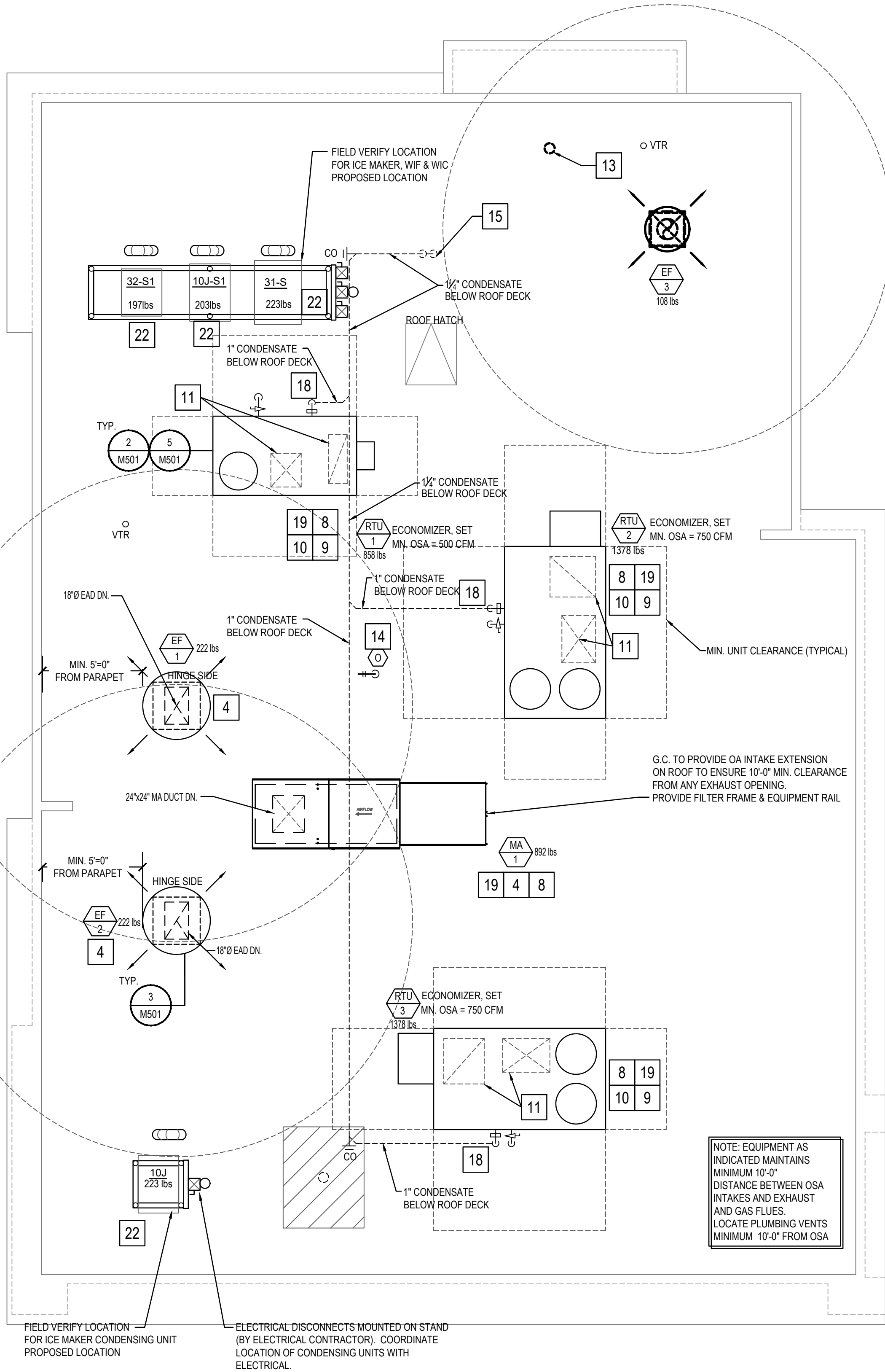


HVAC FLOOR PLAN 2

Scale: 1/4"=1'-0" M-100



HVAC ROOF PLAN 1

Scale: 1/4"=1'-0" M-100

MECHANICAL KEY NOTES:

1. INSTALL GREASE EXHAUST HOODS FURNISHED BY PANDA. HOOD SHALL BE ONE CAPTIVEAIRE 4824ND HOOD EXHAUSTING 3,450 CFM. SUPPORT FROM STRUCTURE ABOVE WITH UNISTRUT AND ALL THREAD ROD. MOUNT HOOD PER LOCAL CODE REQUIREMENTS. REFER TO PLAN FOR HOOD CONNECTIONS. SEE CODE COMPLIANCE DRAWINGS ON SHEET M-500 AND CAPTIVEAIRE HOOD DRAWINGS FOR ADDITIONAL REQUIREMENTS. (TWO SECTIONS TOTAL).
2. PROVIDE AND INSTALL MANUFACTURED CAPTIVEAIRE 18" GREASE EXHAUST DUCT. ROUTE ON TOP OF MAKE UP AIR DUCT, FROM INLET OF ROOF MOUNTED GREASE EXHAUST FAN, CONNECT TO EXHAUST HOOD COLLAR, FIELD VERIFY. SEAL DUCT TO THE ROOF CURB WITH FIRE CAULKING. SEE HOOD DETAIL. DRAWINGS ON SHEET M-500 AND CAPTIVEAIRE DRAWINGS ON SHEETS M-400 TO M-410.
3. MOUNT THERMOSTAT AT MANAGER STATION. REFER TO DETAIL #1 ON SHEET E-200. SEE DWG FOR EXACT LOCATION OF REMOTE SENSOR. SEE ROOFTOP UNIT SCHEDULE AND TEMPERATURE CONTROL DIAGRAM DETAIL 5 ON SHEET M-501 FOR ADDITIONAL INFORMATION.
4. INSTALL GREASE EXHAUST FAN WITH CURB (EF-1 AND EF-2) AND MAKE UP AIR (MA-1) FURNISHED BY PANDA. COORDINATE LOCATION OF UNIT WITH ARCHITECTURAL AND STRUCTURAL DRAWINGS.
5. PROVIDE AND INSTALL A REMOTE SENSOR FOR ROOFTOP UNIT AT THIS LOCATION. MOUNT REMOTE SENSOR IN RETURN AIR DUCTWORK. SEE TEMPERATURE CONTROL DIAGRAM ON SHEET M-501 FOR ADDITIONAL INFORMATION.
6. PROVIDE AND INSTALL DUCT MOUNTED SMOKE DETECTOR AT MAIN SUPPLY AIR DUCT AND RETURN AIR DUCT PER OMC, SECTION 606.2.1. DETECTORS SHALL BE INTERLOCKED TO SHUT DOWN ROOFTOP UNITS UPON DETECTION OF SMOKE. PROVIDE ALL CONTROL WIRING NECESSARY TO PERFORM THIS OPERATION.
7. PROVIDE FLEXIBLE CONNECTION BETWEEN UNIT, ROUTE DUCT THRU ROOF CURB AND TRUSS.
8. FOR GAS CONNECTION, SEE PLUMBING DRAWINGS.
9. PROVIDE FABRICATED CURB PER MANUFACTURERS REQUIREMENTS AND COORDINATE EXACT LOCATION OF UNIT IN FIELD. SHIM ROOF CURB LEVEL FOR PROPER CONDENSATE DRAINAGE. REFER TO DETAIL 2/M501.
10. FURNISH AND INSTALL ALL TEMPERATURE CONTROL WIRING FROM THE UNIT TO THE THERMOSTAT OR OTHER CONTROL DEVICES.
11. FULL SIZE SA AND RA UP TO RTU. TRANSITION AS REQUIRED TO RTU INLET/OUTLET SIZE.
12. PVC COMBINATION VENT AND COMBUSTION AIR PIPING PROVIDED AND INSTALLED BY PLUMBING FOR SEALED COMBUSTION WATER HEATER. REFER TO PLUMBING PLANS.
13. WATER HEATER CONCENTRIC VENT TERMINATION. REFER TO PLUMBING PLANS. OFFSET AS REQUIRED FOR CLEARANCE FROM AIR INTAKES.
14. ROOF HYDRANT. REFER TO PLUMBING DRAWINGS.
15. ROUTE CONDENSATE DRAIN IN CEILING SPACE OVER AND DOWN IN WALL. SLOPE 1/4" PER FOOT. STUB-OUT AND ELBOW DOWN OVER MOP SINK. TERMINATE WITH MINIMUM 2" AIR GAP.
16. MA DUCT (BELOW MAKE UP AIR) CONNECT TO 28"x10" RISER FROM SUPPLY PLENUM. 1,380 CFM
17. PROVIDE DUCT EXTERNAL INSULATION WRAP AT TRUNK, TYPICAL.
18. CONDENSATE DRAIN LINE DOWN THRU ROOF. REFER TO DETAIL 16/P-500.
19. PROVIDE AND INSTALL ALL EQUIPMENT WITH MANUFACTURER'S RECOMMENDED CLEARANCES FOR MAINTENANCE. MAINTAIN MINIMUM CLEARANCES TO ELECTRICAL AND SERVICE ACCESS PANELS AND DISCONNECTS.
20. GREASE DUCT CLEANOUT LOCATION. PROVIDE ACCESS TO CLEANOUT ABOVE CEILING. REFER TO MECHANICAL SPECIFICATIONS SHEET M-000
21. 8" CONNECTION TO HOOD RTU SUPPLY PLENUM COLLAR. BALANCE TO 259 CFM.
22. PROVIDE AND INSTALL ACR TUBING, SIZED AND ROUTED PER MANUFACTURER'S INSTRUCTIONS, FROM REMOTE REFRIGERANT CONDENSERS TO WALK-IN COOLER AND FREEZER FAN COILS, AND ICE MAKER. TEST, PURGE, EVACUATE AND CHARGE LINES AS REQUIRED BY MANUFACTURER. (START-UP FOR ICE MAKER IS BY OWNER'S REPRESENTATIVE). ROUTE REFRIGERANT LINES THROUGH "ATR HUB" PROVIDED AND INSTALLED BY GC (REFER TO ARCH. ISO 3 AND 4, SHEET A-108). UNITS SECURED TO RACK BY G.C.
23. ROOM AIR SENSOR FROM CAPTIVEAIRE HOOD ON BACK OF MENU BOARD WALL, AS CLOSE TO CEILING AS POSSIBLE.

NOTE: MAXIMUM FLEXIBLE DUCT LENGTH ALLOWED SHALL BE PER LOCAL CODE AND AMENDMENTS. OMC HAS NO LIMITATIONS FOR FLEXIBLE DUCT LENGTHS.

NOTE: EQUIPMENT AS INDICATED MAINTAINS MINIMUM 10'-0" DISTANCE BETWEEN OSA INTAKES AND EXHAUST AND GAS FLUES. LOCATE PLUMBING VENTS MINIMUM 10'-0" FROM OSA



PANDA EXPRESS, INC.
1683 Walnut Grove Ave.
Rosemead, California
91770
Telephone: 626.799.9898
Facsimile: 626.372.8288

All ideas, designs, arrangement and plans indicated or represented by this drawing are the property of Panda Express Inc. and were created for use on this specific project. None of these ideas, designs, arrangements or plans may be used by or disclosed to any person, firm, or corporation without the written permission of Panda Express Inc.

REVISIONS:

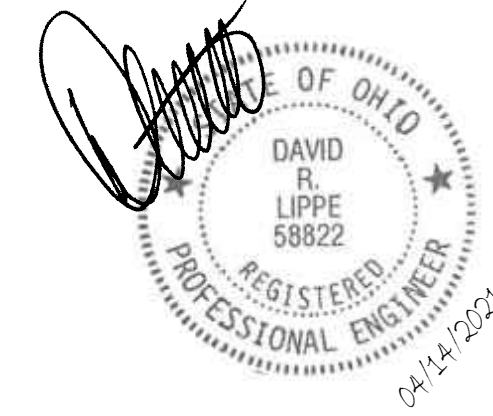
NO.	DESCRIPTION	DATE
1st	BUILDING PERMIT SET	04-02-21

ISSUE DATE:

1st BUILDING PERMIT SET 04-02-21

DRAWN BY: KB

PANDA PROJECT #: S8-22-D8193
PANDA STORE #: -
ARCH PROJECT #: 20044.021



8813 PENROSE LANE, SUITE 400
LENEXA, KS 66219
ph: 913.649.8181 • fx: 913.649.1275

PANDA EXPRESS

TRUE WARM & WELCOME
1485 MAIN ST.
HAMILTON, OH 45013



M-100

H.V.A.C. FLOOR PLAN &
H.V.A.C. ROOF PLAN

TRUE WARM & WELCOME 2300 R5

PATENT NUMBERS

AC-PSP (UNITED STATES) – US PATENT 7963830 B2.
AC-PSP WALL (CANADA) – CA PATENT 2820509.
AC-PSP ISLAND (CANADA) – CA PATENT 2520330.

HOOD NO	TAG	MODEL	MANUFACTURER	LENGTH	MAX COOKING TEMP	TYPE	APPLIANCE DUTY	DESIGN CFM/FT	TOTAL EXH CFM	EXHAUST PLENUM							MUA CFM	AC CFM	HOOD CONSTRUCTION	HOOD CONFIG	
										RISER(S)										END TO END	ROW
										WIDTH	LENG	HEIGHT	DIA	CFM	VEL	SP					
1		4824 ND-2-ACPS-F	CAPTIVEAIRE	11' 6"	600 DEG	I	HEAVY	300	3450			4"	18"	3450	1952	-0.635"	2760	518	430 SS WHERE EXPOSED	LEFT	ALONE
2		4824 ND-2-ACPS-F	CAPTIVEAIRE	11' 6"	600 DEG	I	HEAVY	300	3450			4"	18"	3450	1952	-0.635"	2760	518	430 SS WHERE EXPOSED	RIGHT	ALONE

HOOD NO	TAG	TYPE	QTY	FILTER(S)			QTY	LIGHT(S)			WIRE GUARD	LOCATION	SIZE	UTILITY CABINET(S)				FIRE SYSTEM PIPING	HOOD HANGING WEIGHT
				HEIGHT	LENGTH	EFFICIENCY @ 7 MICRONS		TYPE	FIRE SYSTEM					ELECTRICAL	SWITCHES				
									TYPE	SIZE						MODEL #	QUANTITY		
1		SS BAFFLE WITH HANDLES	8	20"	16"	30%	6	L55 SERIES E26	NO	WALL MNT	12"x54"x24"	ANSUL R102	3.0/3.0/3.0	SC-321110FP-SEP	1 LIGHT 1 FAN		YES	595 LBS	
2		SS BAFFLE WITH HANDLES	8	20"	16"	30%	6	L55 SERIES E26	NO	RIGHT	20"x48"x24"						YES	685 LBS	

HOOD NO	TAG	OPTION
1		LEFT END STANDOFF 3" WIDE 48" LONG.
		RISER SENSOR INSTALL 6IN PLEN.
2		RISER SENSOR INSTALL 6IN PLEN.

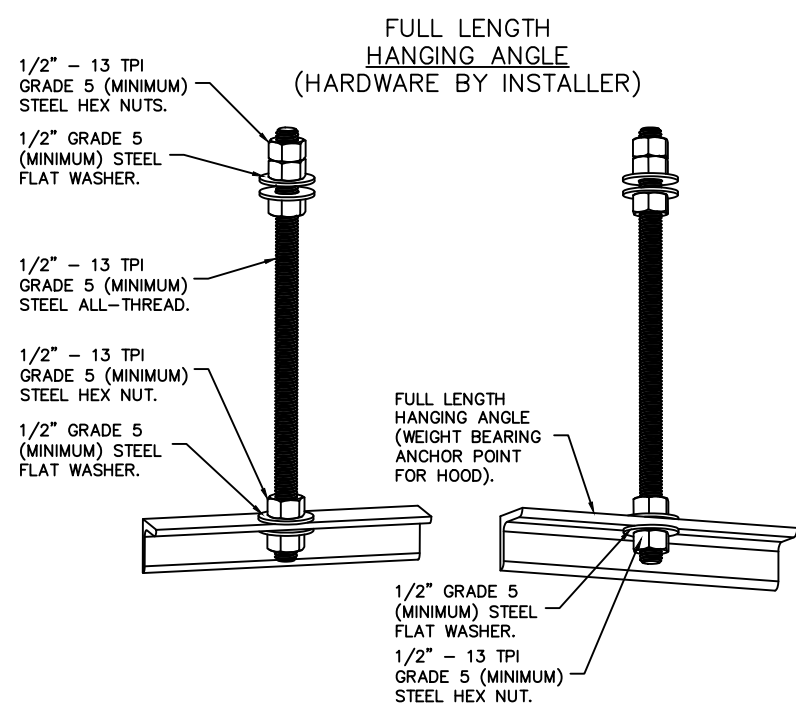
HOOD NO	TAG	POS	LENGTH	WIDTH	HEIGHT	TYPE	RISE(S)				
							WIDTH	LENG	DIA	CFM	SP
1		Front	141"	22"	6"	MUA	10"	28"		1380	0.696"
						MUA	10"	28"		1380	0.696"
						AC			8"	259	0.160"
						AC			8"	259	0.160"
2		Front	158"	22"	6"	MUA	10"	28"		1380	0.696"
						MUA	10"	28"		1380	0.696"
						AC			8"	259	0.145"
						AC			8"	259	0.145"

FIRE SYSTEM NO	TAG	TYPE	SIZE	FLOW POINTS	INSTALLATION	
					SYSTEM	LOCATION ON HOOD
1		ANSUL R102	3.0/3.0/3.0	23	WALL UTILITY CABINET LEFT	N/A

FOR QUESTIONS CALL THE
CAPTIVEAIRE
SOUTHERN CALIFORNIA OFFICE
3002 DOW AVENUE, SUITE 410
TUSTIN, CA 92780
4-957-1500 EMAIL: REG86@CAPTIVEAIRE.COM

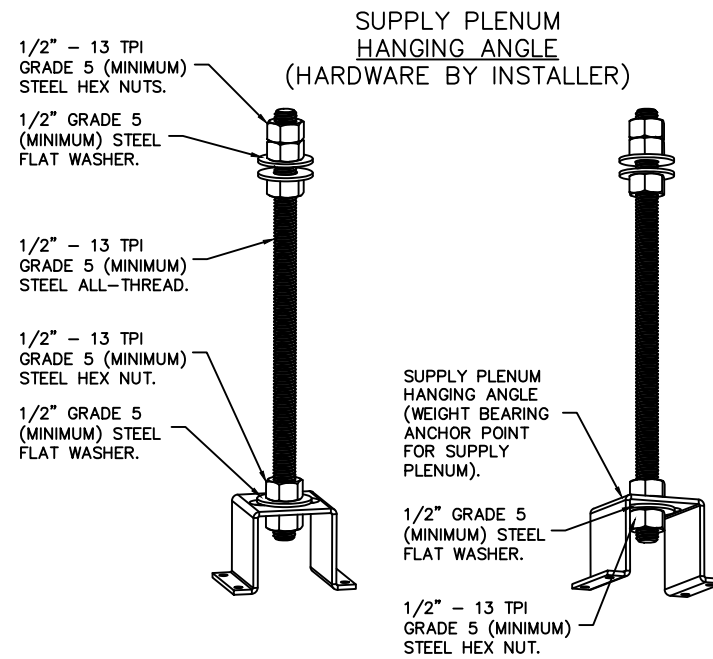


HANGING ANGLE MUST BE SUPPORTED WITH 1/2" – 13 TPI GRADE 5 (MINIMUM) ALL-THREAD. SANDWICH HANGING ANGLES AND CEILING ANCHOR POINTS WITH 1/2" GRADE 5 (MINIMUM) STEEL FLAT WASHERS AND 1/2" – 13 TPI GRADE 5 (MINIMUM) HEX NUTS AS SHOWN. MUST USE DOUBLED HEX NUT CONFIGURATION BENEATH HOOD HANGING ANGLES AND ABOVE CEILING ANCHORS. MAINTAIN 1/4" OF EXPOSED THREADS BENEATH BOTTOM HEX NUT. TORQUE ALL HEX NUTS TO 57 FT-LBS.



ASSEMBLY INSTRUCTIONS

HANGING ANGLE MUST BE SUPPORTED WITH 1/2" – 13 TPI GRADE 5 (MINIMUM) ALL-THREAD, SANDWICH HANGING ANGLES AND CEILING ANCHOR POINTS WITH 1/2" GRADE 5 (MINIMUM) STEEL FLAT WASHERS AND 1/2" – 13 TPI GRADE 5 (MINIMUM) HEX NUTS AS SHOWN, MUST USE DOUBLED HEX NUT CONFIGURATION ABOVE CEILING ANCHORS, SINGLE HEX NUT BENEATH HANGING ANGLE IS ACCEPTABLE FOR FULL LENGTH HANGING ANGLES, MAINTAIN 1/4" OF EXPOSED THREADS BENEATH BOTTOM HEX NUT. TORQUE ALL HEX NUTS TO 57 FT-LBS.



ASSEMBLY INSTRUCTIONS

HANGING ANGLE MUST BE SUPPORTED WITH 1/2" - 13 TPI
GRADE 5 (MINIMUM) ALL-THREAD, SANDWICH HANGING
ANGLES AND CEILING ANCHOR POINTS WITH 1/2" GRADE 5
(MINIMUM) STEEL FLAT WASHERS AND 1/2" - 13 TPI GRADE
5 (MINIMUM) HEX NUTS AS SHOWN. MUST USE DOUBLED HEX
NUT CONFIGURATION ABOVE CEILING ANCHORS. SINGLE HEX
NUT BENEATH HANGING ANGLE IS ACCEPTABLE FOR PSP
HANGING ANGLES. MAINTAIN 1/4" OF EXPOSED THREADS
BENEATH BOTTOM HEX NUT. TORQUE ALL HEX NUTS TO 57
FT-LBS.

REVISIONS	
DESCRIPTION	DATE:
Δ	
Δ	
Δ	
Δ	
Δ	
Δ	
Δ	

CAPTIVE

www.captiveaire.com

Southern California Office

3002 Dow Ave., Suite 410, Tustin, CA 92780 PHONE: (714) 957-1500 FAX: (919) 227-5975 EMAIL: reg@captivair.com

Panda Express – Hamilton OH (D8193)

HAMILTON, OH, 45011

DATE: 3/12/2021

DWG.#:
4793684

DRAWN BY: AH–86

SCALE:
 $\frac{3}{4}'' = 1'-0''$

MASTER DRAWING

SHEET NO.

1



PANDA EXPRESS, INC.
1683 Walnut Grove Ave.
Rosemead, California
91770
Telephone: 626.799.9898
Facsimile: 626.372.8288

All ideas, designs, arrangement and plans indicated or represented by this drawing are the property of Panda Express Inc. and were created for use on this specific project. None of these ideas, designs, arrangements or plans may be used by or disclosed to any person, firm, or corporation without the written permission of Panda Express Inc.

REVISIONS:

ISSUE DATE:

1st	BUILDING PERMIT SET	04-02-21

DRAWN BY: KB

PANDA PROJECT #: S8-22-D8193

PANDA STORE #: -

ARCH PROJECT #: 20044.021

FOR REFERENCE ONLY



PANDA EXPRESS

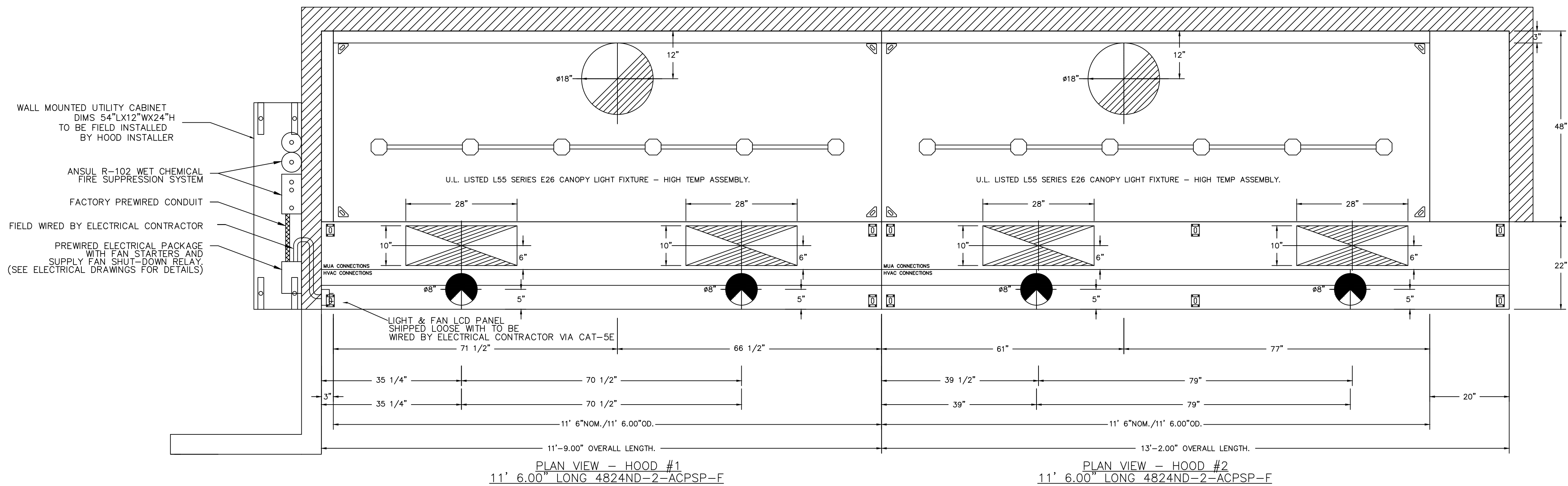
TRUE WARM & WELCOME
1485 MAIN ST.
HAMILTON, OH 45013

M-400

HOOD DETAIL PLAN

TRUE WARM & WELCOME 2300 R5



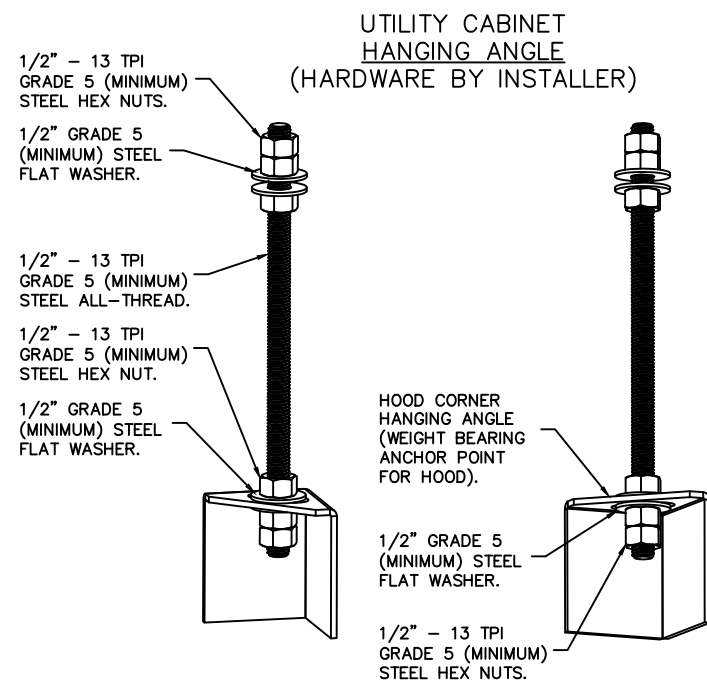


ACPSP SHIPS LOOSE FOR FIELD INSTALLATION

ACPSP SHIPS LOOSE FOR FIELD INSTALLATION

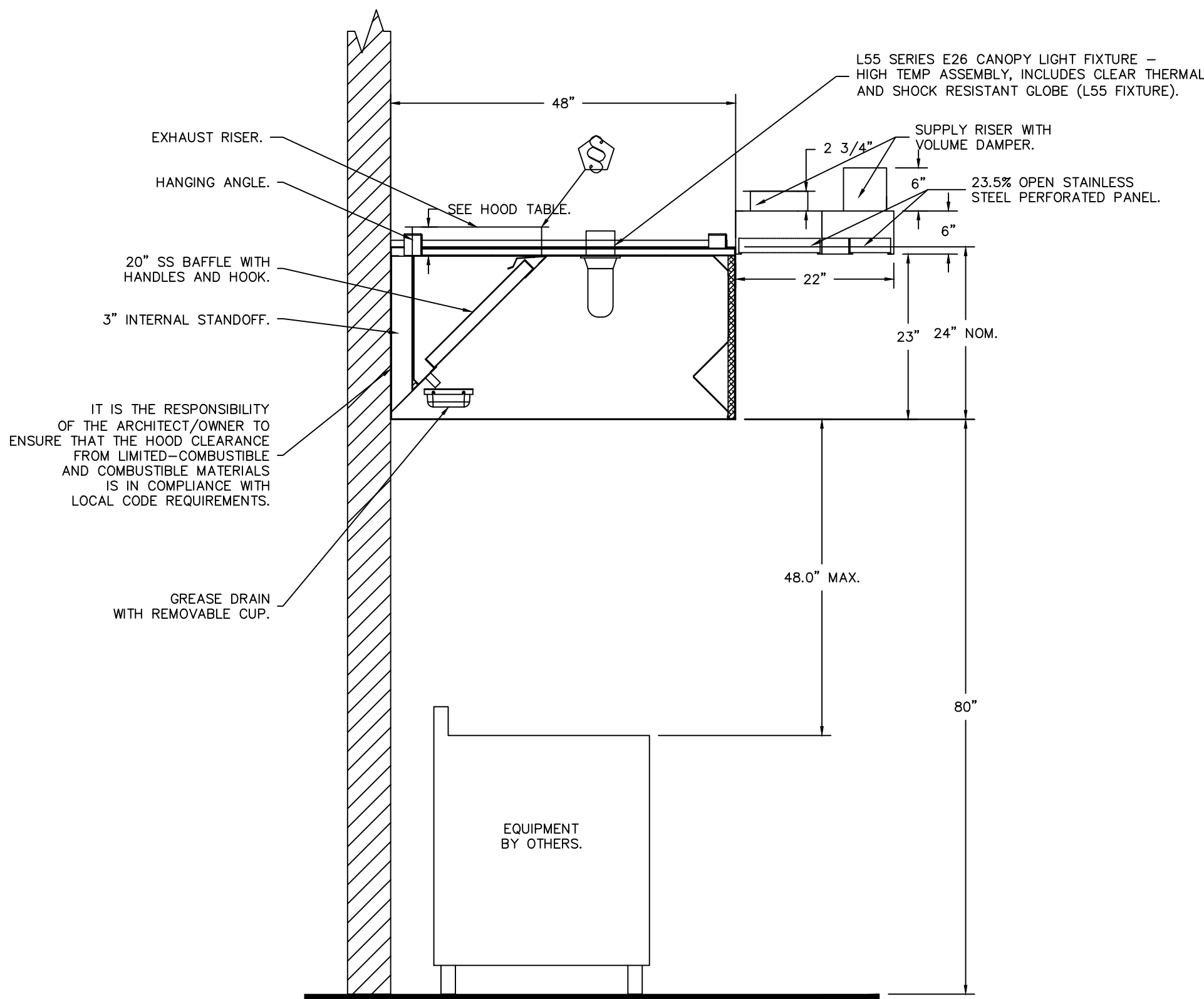
WALL-MOUNT UTILITY CABINET ASSEMBLY INSTRUCTIONS

HANGING ANGLE MUST BE SUPPORTED WITH 1/2" - 13 TPI GRADE 5 (MINIMUM) ALL-THREAD, SANDWICH HANGING ANGLES AND CEILING ANCHOR POINTS WITH 1/2" GRADE 5 (MINIMUM) STEEL FLAT WASHERS AND 1/2" - 13 TPI GRADE 5 (MINIMUM) HEX NUTS AS SHOWN. MUST USE DOUBLED HEX NUT CONFIGURATION BENEATH UTILITY CABINET HANGING ANGLES AND ABOVE CEILING ANCHORS. MAINTAIN 1/4" OF EXPOSED THREADS BENEATH BOTTOM HEX NUT. TORQUE ALL HEX NUTS TO 57 FT-LBS.



CAPTIVE-AIRE HOODS ARE
BUILT IN COMPLIANCE WITH
UL 710 AND NFPA 96
AND ARE RECOGNIZED BY ONE
OR MORE OF THE FOLLOWING:

ETL SANITATION LISTED
ETL LISTED
FILE# 102900319PRT-001



SECTION VIEW - MODEL 4824ND-2-ACPSP-F
HOOD - #1

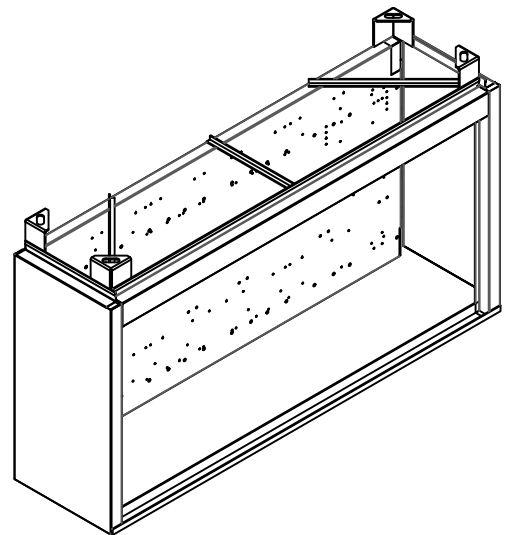
NOTE: UNLESS OTHERWISE STATED, PANDA RESTAURANT GROUP SHALL PROVIDE ALL EQUIPMENT ON THE FOLLOWING CAPTIVEAIRE SHEETS, INCLUDING: HOODS, FIRE SYTEM, EXHAUST FANS, SUPPLY FAN, BATHROOM FAN AND ELECTRICAL INTERLOCK PACKAGE

DOUBLE WALL DUCT BY MECHANICAL PLEASE USE CONTACT BELOW FOR PRICING

ANSUL GAS VALVE:

THE ANSUL GAS VALVE IS PROVIDED BY CAPTIVEAIRE SYSTEMS. CONTACT OUR OFFICE WITH THE VALVE SIZE 3 DAYS IN ADVANCE OF WHEN IT IS NEEDED ON SITE.

FOR QUESTIONS CALL THE CAPTIVEAIRE SOUTHERN CALIFORNIA OFFICE
3002 DOW AVENUE, SUITE 410
TUSTIN, CA 92780
TEL: 714-957-1500 EMAIL: REG86@CAPTIVEAIRE.COM



REVISIONS

DESCRIPTION	DATE:
Δ	
Δ	
Δ	
Δ	

CAPTIVEAIRE

www.captiveaire.com

Southern California Office

3002 Dow Ave., Suite 410, Tustin, CA 92780 PHONE: (714) 957-1500 FAX: (919) 227-5975 EMAIL: reg86@captiveaire.com

Panda Express - Hamilton OH (D8193)
HAMILTON, OH, 45011

DATE: 3/12/2021
DWG.#: 4793684
DRAWN BY: AH-86
SCALE: 3/4" = 1'-0"
MASTER DRAWING
SHEET NO. 2



PANDA EXPRESS, INC.
1683 Walnut Grove Ave.
Rosemead, California
91770
Telephone: 626.799.9898
Facsimile: 626.372.8288

All ideas, designs, arrangement and plans indicated or represented by this drawing are the property of Panda Express Inc. and were created for use on this specific project. None of these ideas, designs, arrangements or plans may be used by or disclosed to any person, firm, or corporation without the written permission of Panda Express Inc.

REVISIONS:

ISSUE DATE:

1st BUILDING PERMIT SET 04-02-21

DRAWN BY: KB

PANDA PROJECT #: S8-22-D8193

PANDA STORE #: -

ARCH PROJECT #: 20044.021

FOR REFERENCE ONLY

khckloverarchitect
8813 PENROSE LANE, SUITE 400
LENEXA, KS 66219
ph: 913.649.8181 • fx: 913.649.1275

PANDA EXPRESS

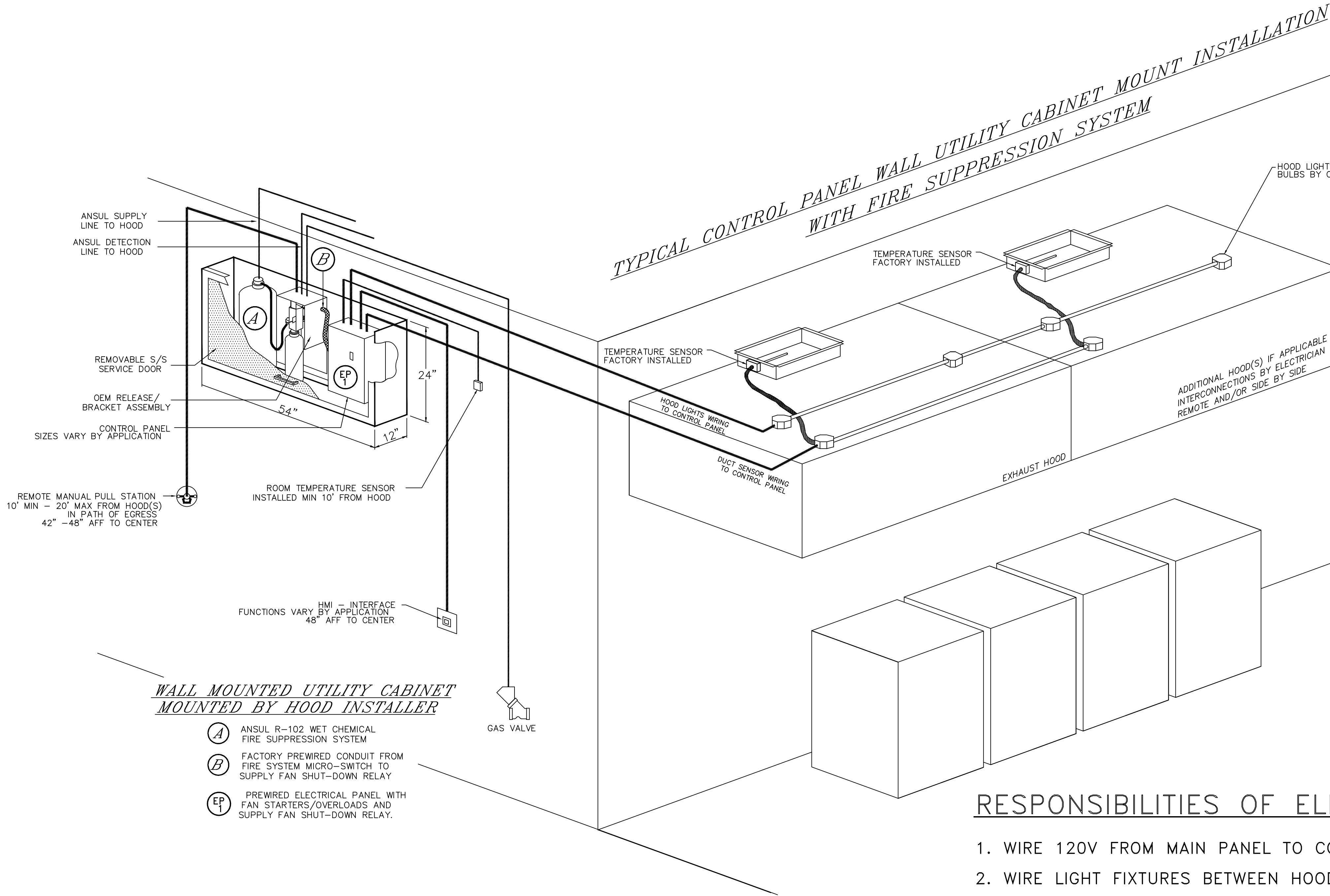
TRUE WARM & WELCOME
1485 MAIN ST.
HAMILTON, OH 45013

M-401

HOOD DETAIL PLAN

TRUE WARM & WELCOME 2300 R5

rtm
engineering consultants
9225 Indian Creek Pkwy, Suite 1075
Overland Park, KS 66210
Ohio COA: 05046
913.303.0063 | www.rtmec.com



TERMINAL BLOCK WIRING DETAILS CAN BE FOUND ON ELECTRICAL WIRING DIAGRAMS

NOTE: UNLESS OTHERWISE STATED, PANDA RESTAURANT GROUP SHALL PROVIDE ALL EQUIPMENT ON THE FOLLOWING CAPTIVEAIRE SHEETS, INCLUDING: HOODS, FIRE SYTEM, EXHAUST FANS, SUPPLY FAN, BATHROOM FAN AND ELECTRICAL INTERLOCK PACKAGE

DOUBLE WALL DUCT BY MECHANICAL PLEASE USE CONTACT BELOW FOR PRICING

ANSUL GAS VALVE:

THE ANSUL GAS VALVE IS PROVIDED BY CAPTIVEAIRE SYSTEMS. CONTACT OUR OFFICE WITH THE VALVE SIZE 3 DAYS IN ADVANCE OF WHEN IT IS NEEDED ON SITE.

FOR QUESTIONS CALL THE CAPTIVEAIRE SOUTHERN CALIFORNIA OFFICE

3002 DOW AVENUE, SUITE 410 TUSTIN, CA 92780

TEL: 714-957-1500 EMAIL: REG86@CAPTIVEAIRE.COM

REVISIONS

DESCRIPTION	DATE:
Δ	
Δ	
Δ	
Δ	

CAPTIVEAIRE

Southern California Office

3002 Dow Ave., Suite 410, Tustin, CA 92780 PHONE: (714) 957-1500 FAX: (919) 227-5975 EMAIL: reg86@captiveaire.com

Panda Express – Hamilton OH (D8193)

HAMILTON, OH, 45011

DATE: 3/12/2021

DWG.#: 4793684

DRAWN BY: AH-86

SCALE: 3/4" = 1'-0"

MASTER DRAWING

SHEET NO. 3

RESPONSIBILITIES OF ELECTRICIAN

1. WIRE 120V FROM MAIN PANEL TO CONTROL PANEL
2. WIRE LIGHT FIXTURES BETWEEN HOOD(S) & BACK TO CONTROL PANEL
3. WIRE TEMPERATURE SENSOR(S) FROM EXHAUST COLLARS TO CONTROL PANEL
4. MOUNT & WIRE ROOM SENSOR TO CONTROL PANEL
5. WIRE FAN POWER FROM MAIN PANEL THROUGH CONTROL PANEL TO FAN(S)
6. WIRE SHUNT COIL TO CONTROL PANEL
7. WIRE GAS VALVE (IF APPLICABLE) TO CONTROL PANEL (120V FROM CONTROL PANEL)

ADDITIONAL RESPONSIBILITIES IF APPLICABLE

1. IF MULTIPLE FIRE SYSTEMS ON SINGLE CONTROL PANEL, THE FOLLOWING MUST OCCUR
 - A. ANSUL AUTOMAN MICROSWITCHES TO BE WIRED IN SERIES BACK TO CONTROL PANEL
 - B. ANSUL CATRIDGE MICROSWITCHES TO BE WIRED IN SERIES BACK TO CONTROL PANEL

RESPONSIBILITIES OF ALARM CONTRACTOR

1. WIRE ANSUL ALARM MICROSWITCH TO BUILDING ALARM PANEL



PANDA EXPRESS, INC.
1683 Walnut Grove Ave.
Rosemead, California
91770
Telephone: 626.799.9898
Facsimile: 626.372.8288

All ideas, designs, arrangement and plans indicated or represented by this drawing are the property of Panda Express Inc. and were created for use on this specific project. None of these ideas, designs, arrangements or plans may be used by or disclosed to any person, firm, or corporation without the written permission of Panda Express Inc.

REVISIONS:		
ISSUE DATE:		
1st	BUILDING PERMIT SET	04-02-21

DRAWN BY:	KB
PANDA PROJECT #:	S8-22-D8193
PANDA STORE #:	-
ARCH PROJECT #:	20044.021

FOR REFERENCE ONLY

hckloverarchitect

8813 PENROSE LANE, SUITE 400
LENEXA, KS 66219
ph: 913.649.8181 • fx: 913.649.1275

PANDA EXPRESS
TRUE WARM & WELCOME
1485 MAIN ST.
HAMILTON, OH 45013

FAN UNIT NO	TAG	QTY	FAN UNIT MODEL #	MANUFACTURER	CFM	ESP	RPM	MOTOR ENCL	HP	BHP	PHASE	VOLT	FLA	DISCHARGE VELOCITY	WEIGHT (LBS)	SONES
1		1	EABDU18	ECON-AIR	3450	1.250	1223	ODP	2.000	1.3860	3	208	5.9	797 FPM	189	17.6
2		1	EABDU18	ECON-AIR	3450	1.250	1223	ODP	2.000	1.3860	3	208	5.9	797 FPM	189	17.6
3		1	EABDCR7	ECON-AIR	450	0.250	1128	ODP	0.250	0.0850	1	115	4.8		90	6.3

FAN UNIT NO	TAG	QTY	FAN UNIT MODEL #	BLOWER	HOUSING	MIN CFM	DESIGN CFM	ESP	RPM	MOTOR ENCL	HP	BHP	PHASE	VOLT	FLA	MCA	MOCp	WEIGHT (LBS)	SONES
4		1	EA3-D.500-G18	G18-PB	A3-D.500	3500	5520	0.750	783	ODP,PREMIUM	5.000	2.5730	3	208	15.0	18.8A	30A	852	13.5

FAN UNIT NO	TAG	INPUT BTUs	OUTPUT BTUs	TEMP RISE	REQUIRED INPUT GAS PRESSURE	GAS TYPE	BURNER EFFICIENCY(%)
4		590400	543168	100°F	7 IN. W.C. - 14 IN. W.C.	NATURAL	92

FAN UNIT NO	TAG	QTY	DESCRIPTION
1		1	GREASE BOX.
		1	UPBLAST FAN WHEEL ACCESS PORT.
		1	FAN BASE CERAMIC SEAL – INSTALLED AT PLANT – FOR GREASE DUCTS.
		1	2 YEAR PARTS WARRANTY.
2		1	GREASE BOX.
		1	UPBLAST FAN WHEEL ACCESS PORT.
		1	FAN BASE CERAMIC SEAL – INSTALLED AT PLANT – FOR GREASE DUCTS.
		1	2 YEAR PARTS WARRANTY.
3		1	1 15-BDD DAMPER.
		1	2 YEAR PARTS WARRANTY.
4		1	AC INTERLOCK RELAY – 24VAC COIL.
		1	LOW FIRE START.
		1	INLET PRESSURE GAUGE, 0–35".
		1	MANIFOLD PRESSURE GAUGE, –5 TO 15" WC.
		1	MOTORIZED BACKDRAFT DAMPER FOR A3-D HOUSING. MEETS AMCA CLASS 1A RATING.
		1	FREEZESTAT (10).
		1	SEPARATE 120V WIRING PACKAGE (REQUIRED AND USED ONLY FOR DCV OR PREWIRE WITH VFD) – THREE PHASE ONLY.
		1	2 YEAR PARTS WARRANTY.

FAN UNIT NO	TAG	EXHAUST			SUPPLY			
		GREASE CUP	GRAVITY DAMPER	WALL MOUNT	SIDE DISCHARGE	GRAVITY DAMPER	MOTORIZED DAMPER	WALL MOUNT
1		YES						
2		YES						
3			YES					
4							YES	

NO	ON FAN	WEIGHT	ITEM	SIZE	
1	# 1	34 LBS	CURB	26.500"W x 26.500"L x 30.000"H	VENTED HINGED.
2	# 2	34 LBS	CURB	26.500"W x 26.500"L x 30.000"H	VENTED HINGED.
3	# 3	18 LBS	CURB	19.500"W x 19.500"L x 12.000"H	
4	# 4	84 LBS	CURB	35.000"W x 84.000"L x 20.000"H	INSULATED.

Technical drawing of the 1000 Series Grease Gun, showing front and side views with dimensions.

Dimensions:

- Top width: 37 3/8
- Left height: 33 3/4
- Right height: 22 5/8
- Bottom width (top section): 16 1/2
- Bottom width (middle section): 26
- Bottom width (base): 28
- Small dimension on left: 2

Label: GREASE DRAIN.

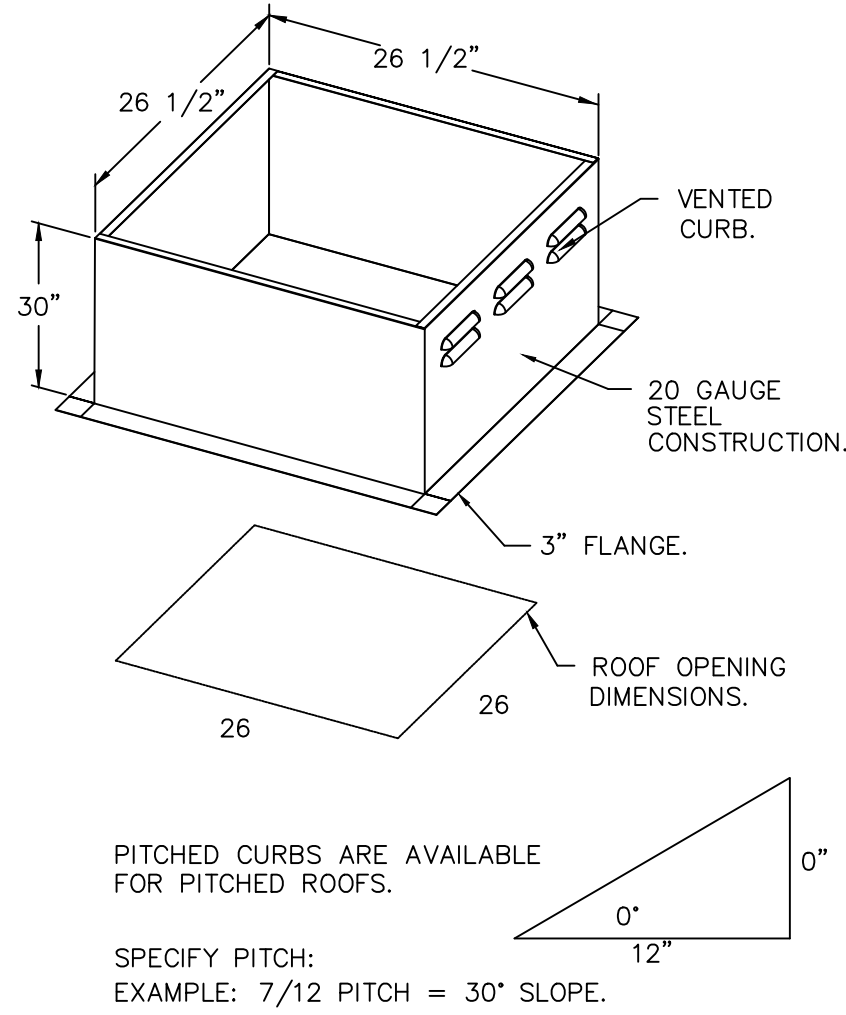
Technical drawing of a circular part with a square hole. The outer diameter is 37 3/8 inches, and the inner square hole has a side length of 28 inches.

- ROOF MOUNTED FANS.
- RESTAURANT MODEL.
- UL705 AND UL762 AND ULC-S645.
- AMCA SOUND AND AIR CERTIFIED.
- WIRING FROM MOTOR TO DISCONNECT SWITCH.
- NEMA 3R SAFETY DISCONNECT SWITCH.
- HIGH HEAT OPERATION 300F (149°C).
- GREASE CLASSIFICATION TESTING.


NORMAL TEMPERATURE TEST
EXHAUST FAN MUST OPERATE CONTINUOUSLY
WHILE EXHAUSTING AIR AT 300°F (149°C)
UNTIL ALL FAN PARTS HAVE REACHED
THERMAL EQUILIBRIUM, AND WITHOUT ANY
DETERIORATING EFFECTS TO THE FAN WHICH
WOULD CAUSE UNSAFE OPERATION.


ABNORMAL FLARE-UP TEST
EXHAUST FAN MUST OPERATE CONTINUOUSLY WHILE EXHAUSTING BURNING GREASE VAPORS AT 600°F (316°C) FOR A PERIOD OF 15 MINUTES WITHOUT THE FAN BECOMING DAMAGED TO ANY EXTENT THAT COULD CAUSE AN UNSAFE CONDITION.

GREASE BOX.
UPBLAST FAN WHEEL ACCESS PORT.
FAN BASE CERAMIC SEAL - INSTALLED AT
PLANT - FOR GREASE DUCTS.
2 YEAR PARTS WARRANTY.



REVISIONS	
DESCRIPTION	DATE:
Δ	
Δ	
Δ	
Δ	
Δ	


Southern California Office
 www.capitive.com


3002 Dow Ave., Suite 410, Tustin, CA 92780 PHONE: (714) 957-1500 FAX: (919) 227-5975 EMAIL: reg@capitive.com

Panda Express – Hamilton OH (D8193)
HAMILTON, OH, 45011

DWG.#:
4793684

SCALE:
1/4" = 1'

SHEET NO.
4



engineering consultants
9225 Indian Creek Pkwy, Suite 1075
Overland Park, KS 66210
Ohio COA: 05046
913.303.0063 | www.rtmec.com



PANDA EXPRESS, INC.
1683 Walnut Grove Ave.
Rosemead, California
91770

Telephone: 626.799.9898
Facsimile: 626.372.8288

All ideas, designs, arrangement and plans indicated or represented by this drawing are the property of Panda Express Inc. and were created for use on this specific project. None of these ideas, designs, arrangements or plans may be used by or disclosed to any person, firm, or corporation without the written permission of Panda Express Inc.

1st	BUILDING PERMIT SET	04-02-21
-----	---------------------	----------

PANDA PROJECT #: S8-22-D8193

PANDA STORE #: -

ARCH PROJECT #: 20044.021

FOR REFERENCE ONLY



8813 PENROSE LANE, SUITE 400
LENEXA, KS 66219
ph: 913.649.8181 • fx: 913.649.1275

PANDA EXPRESS

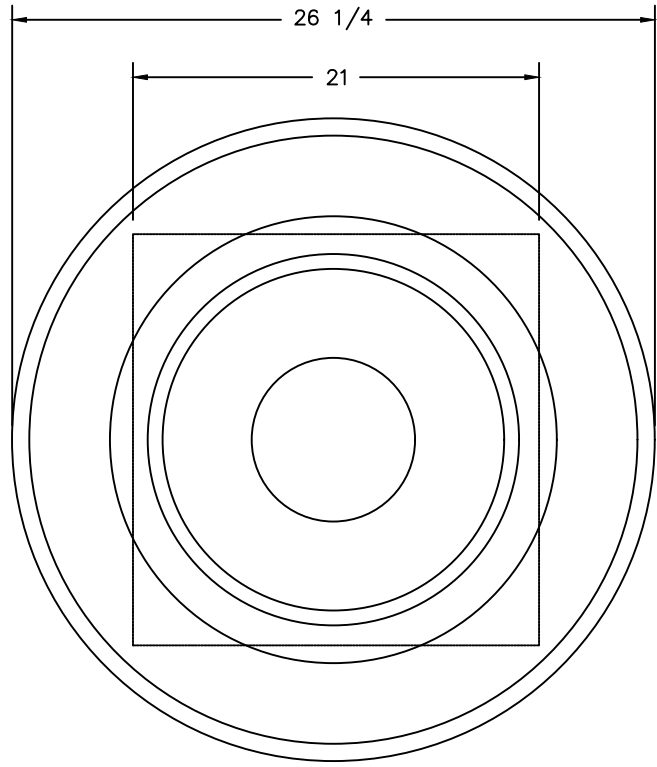
TRUE WARM & WELCOME
1485 MAIN ST.
HAMILTON, OH 45013

M-403

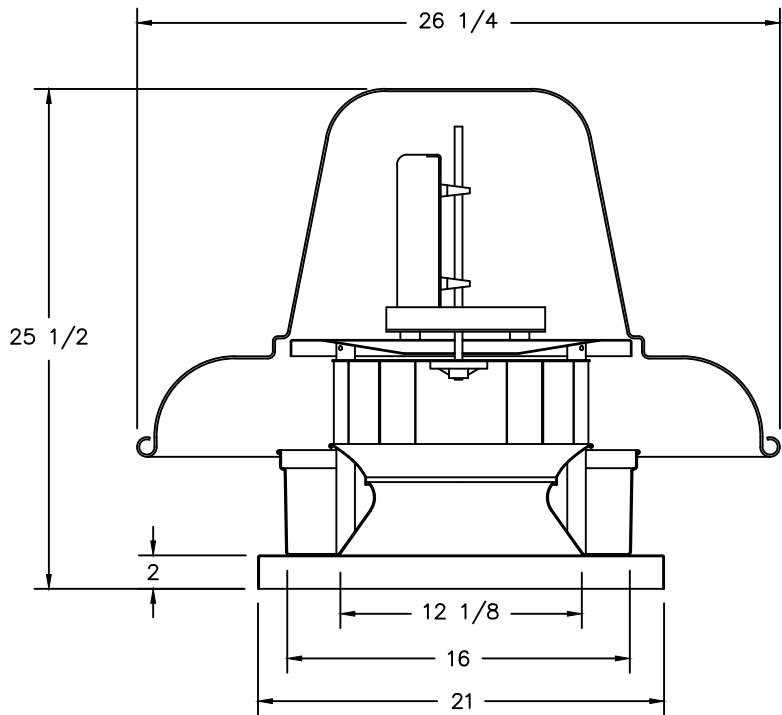
HOOD DETAIL PLAN

TRUE WARM & WELCOME 2300 R5

FAN_#3_FABDCR7 - EXHAUST FAN



TOP VIEW

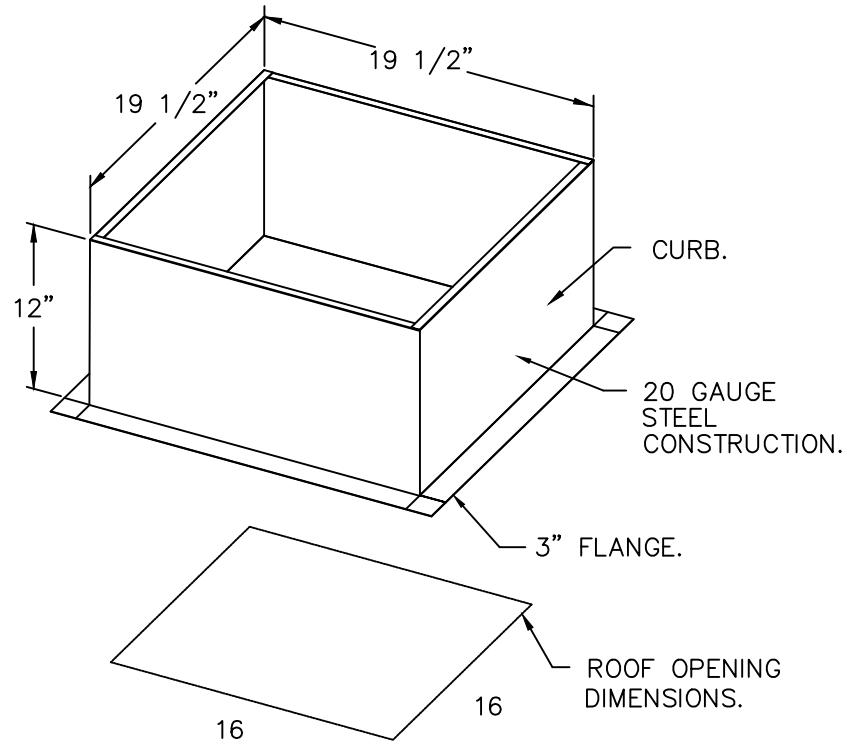


FEATURES:

- ROOF MOUNTED FANS.
- UL705.
- AMCA SOUND AND AIR CERTIFIED.
- WIRING FROM MOTOR TO DISCONNECT SWITCH.
- DISCONNECT SWITCH.
- STANDARD BIRD SCREEN.

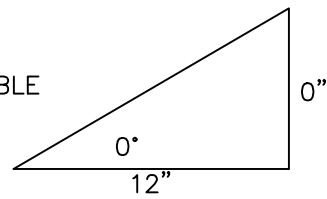
OPTIONS

- 1 15-BDD DAMPER.
- 2 YEAR PARTS WARRANTY.

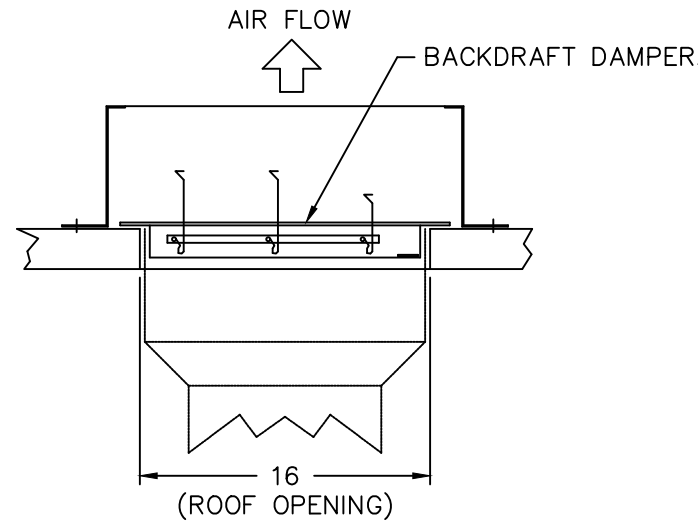


PITCHED CURBS ARE AVAILABLE FOR PITCHED ROOFS.

SPECIFY PITCH:
EXAMPLE: 7/12 PITCH = 30° SLOPE.



BACKDRAFT DAMPER INSTALLATION



REVISIONS

DESCRIPTION	DATE:
Δ	
Δ	
Δ	
Δ	

www.captiveaire.com

Southern California Office

3002 Dow Ave., Suite 410, Tustin, CA 92780 PHONE: (714) 957-1500 FAX: (919) 227-5975 EMAIL: reg86@captiveaire.com

Panda Express – Hamilton OH (D8193)

HAMILTON, OH, 45011

DATE: 3/12/2021

DWG.#: 4793684

DRAWN BY: AH-86

SCALE: 3/4" = 1'-0"

MASTER DRAWING

SHEET NO.

5

engineering consultants
9225 Indian Creek Pkwy, Suite 1075
Overland Park, KS 66210
Ohio COA: 05046
913.303.0063 | www.rtmec.com

PANDA EXPRESS, INC.
1683 Walnut Grove Ave.
Rosemead, California
91770
Telephone: 626.799.9898
Facsimile: 626.372.8288

All ideas, designs, arrangement and plans indicated or represented by this drawing are the property of Panda Express Inc. and were created for use on this specific project. None of these ideas, designs, arrangements or plans may be used by or disclosed to any person, firm, or corporation without the written permission of Panda Express Inc.

REVISIONS:

ISSUE DATE:

1st	BUILDING PERMIT SET	04-02-21

DRAWN BY: KB

PANDA PROJECT #: S8-22-D8193
PANDA STORE #: -
ARCH PROJECT #: 20044.021

FOR REFERENCE ONLY

8813 PENROSE LANE, SUITE 400
LENEXA, KS 66219
ph: 913.649.8181 • fx: 913.649.1275

PANDA EXPRESS
TRUE WARM & WELCOME
1485 MAIN ST.
HAMILTON, OH 45013

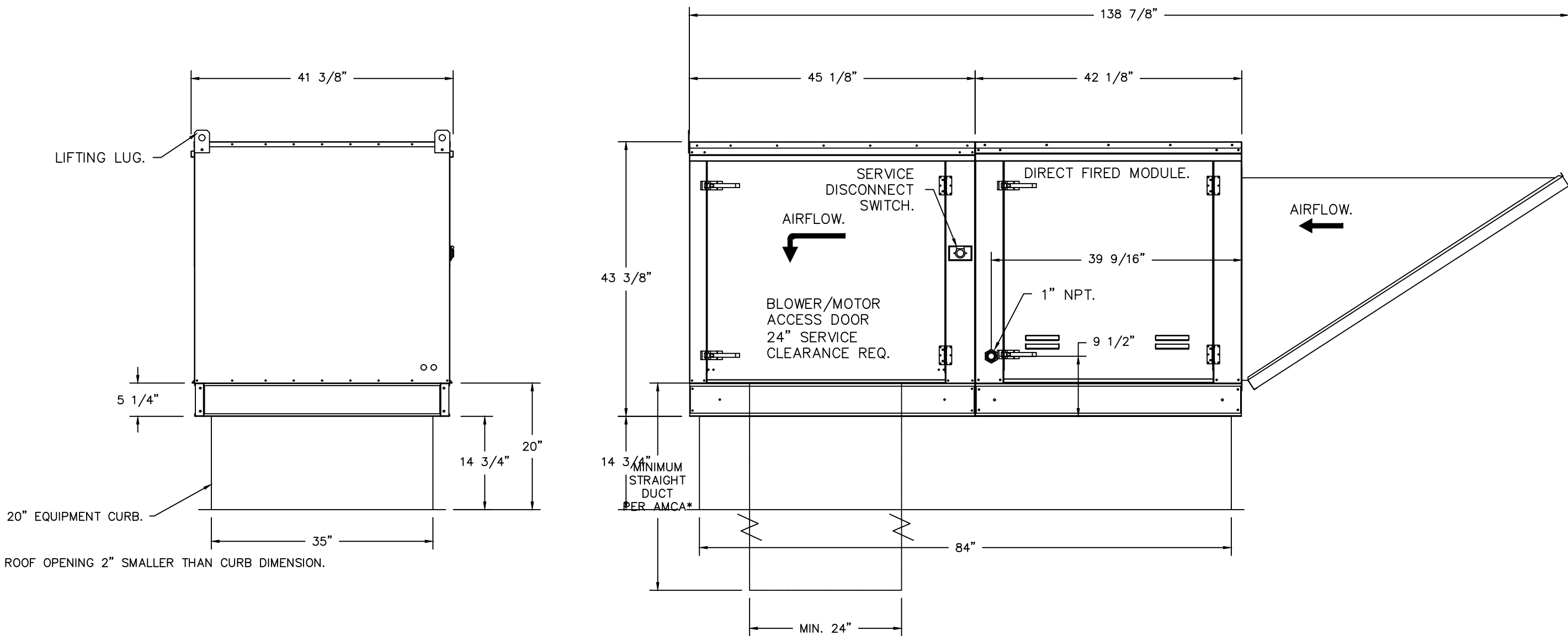
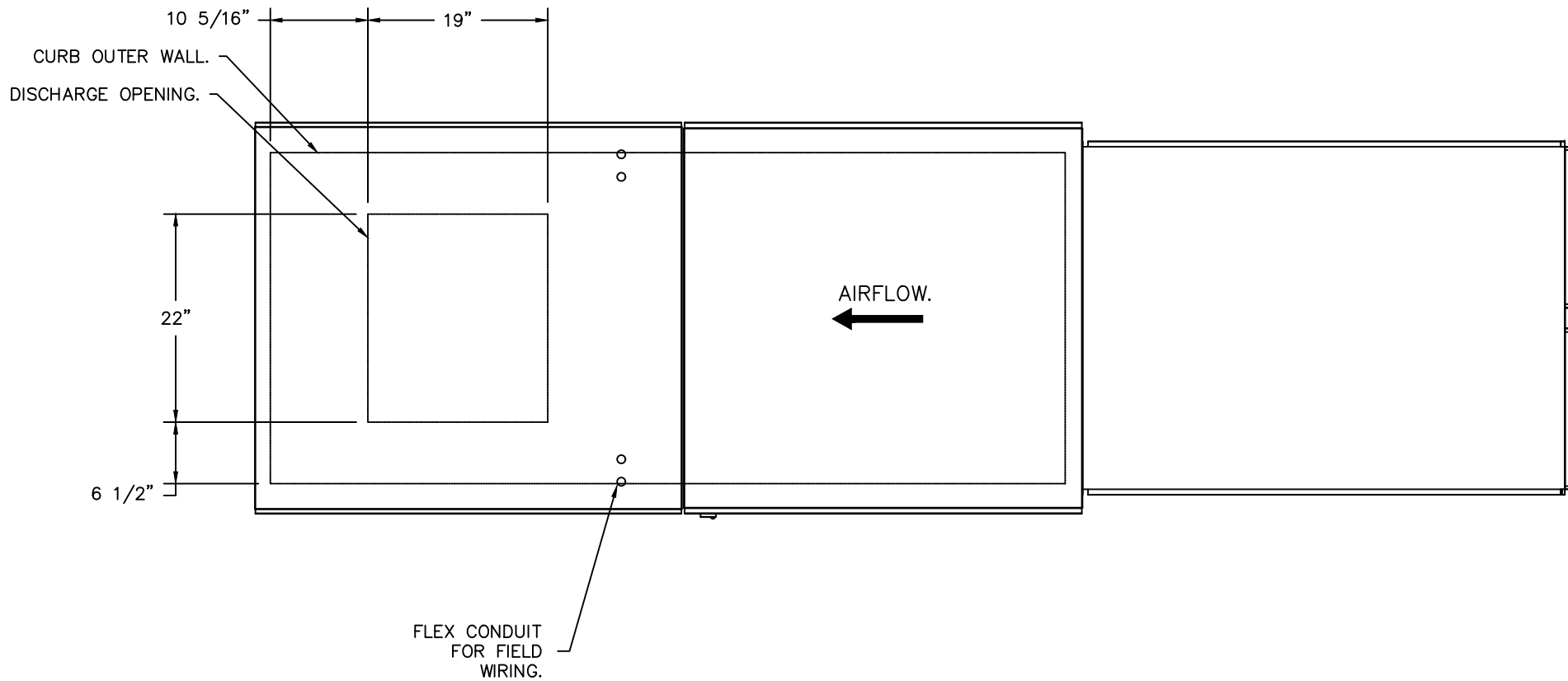
M-404
HOOD DETAIL PLAN
TRUE WARM & WELCOME 2300 R5

- FAN #4 EA3-D.500-G18 - HEATER
1. DIRECT GAS FIRED HEATED MAKE UP AIR UNIT WITH 18" BLOWER AND 12" BURNER.
 2. INTAKE HOOD WITH EZ FILTERS.
 3. DOWN DISCHARGE - AIR FLOW RIGHT -> LEFT.
 4. COOLING INTERLOCK RELAY. 24VAC COIL. 120V CONTACTS. LOCKS OUT BURNER CIRCUIT WHEN AC IS ENERGIZED.
 5. LOW FIRE START. ALLOWS THE BURNER CIRCUIT TO ENERGIZE WHEN THE MODULATION CONTROL IS IN A LOW FIRE POSITION.
 6. GAS PRESSURE GAUGE, 0-35", 2.5" DIAMETER, 1/4" THREAD SIZE.
 7. GAS PRESSURE GAUGE, -5 TO +15 INCHES WC, 2.5" DIAMETER, 1/4" THREAD SIZE.
 8. MOTORIZED BACK DRAFT DAMPER 30" X 30" FOR SIZE 3 STANDARD & MODULAR HEATER UNITS W/EXTENDED SHAFT, STANDARD GALVANIZED CONSTRUCTION, 3/4" REAR FLANGE, LOW LEAKAGE, NFBUP-S ACTUATOR INCLUDED.
 9. FREEZE/STAT WITH 10' SENSOR. FACTORY SET AT 35°F AND 10 MINUTES.
 10. SEPARATE 120VAC WIRING PACKAGE FOR MAKE-UP AIR UNITS. OPTION MUST BE SELECTED WHEN MOUNTING VFD IN PREWIRE PANEL OR WITH DCV PACKAGE. PROVIDES SEPARATE 120VAC INPUT TO SUPPLY FAN. THIS 120V SIGNAL MUST BE RUN BY ELECTRICIAN FROM DCV TO MUA SWITCH.
 12. 2 YEAR PARTS WARRANTY.

*NOTE: SUPPLY DUCT MUST BE INSTALLED TO MEET SMACNA STANDARDS. A MINIMUM STRAIGHT DUCT LENGTH MUST BE MAINTAINED DOWNSTREAM OF UNIT DISCHARGE AS OUTLINED IN AMCA PUBLICATION 201. WHEN USING RECTANGULAR DUCTWORK, ELBOWS MUST BE RADIUS THROAT, RADIUS BACK WITH TURNING VANES. FLEXIBLE DUCTWORK AND SQUARE THROAT/SQUARE BACK ELBOWS SHOULD NOT BE USED. ANY TRANSITION AND/OR TURNS IN THE DUCTWORK WILL CAUSE SYSTEM EFFECT. SYSTEM EFFECT WILL DRASTICALLY INCREASE STATIC PRESSURE AND REDUCE AIRFLOW. DO NOT RELY ON UNIT TO SUPPORT DUCT IN ANY WAY. FAILURE TO PROPERLY SIZE DUCTWORK MAY CAUSE SYSTEM EFFECTS AND REDUCE PERFORMANCE OF THE EQUIPMENT. SUGGESTED STRAIGHT DUCT SIZE IS 24" x 24".

SUPPLY SIDE HEATER INFORMATION:

WINTER TEMPERATURE = 10°F. TEMP. RISE = 98°F.
BTUs CALCULATED OFF ACTUAL AIR DENSITY.
OUTPUT BTUs AT ALTITUDE OF 0.0 FT. = 544333.
INPUT BTUs AT ALTITUDE OF 0.0 FT. = 591666.



DIRECT FIRED PROFILE PLATE SPECIFICATIONS:

DESCRIPTION:
DIRECT FIRED BURNERS SHALL HAVE PATENTED (US PATENT NO.: US629523B2), SELF-ADJUSTING PROFILE PLATES DESIGNED TO ENSURE PROPER AIR VELOCITY AND PRESSURE DROP ACROSS THE BURNER. PROFILE PLATES SHALL ALLOW BURNERS TO ACHIEVE CLEAN COMBUSTION BY LIMITING BY-PRODUCT LEVELS TO A MAXIMUM OF 5PPM OF CARBON MONOXIDE (CO), AND 0.5PPM OF NITROGEN DIOXIDE (NO2). DIRECT FIRED UNITS SHALL BE CONFIGURED WITH THE BLOWER MOUNTED DOWNSTREAM OF THE BURNER. THIS ARRANGEMENT WILL ENSURE A CONSISTENT AIRFLOW, REGARDLESS OF INLET AIR TEMPERATURE.

APPLICATION:
SPRING-LOADED BURNER PROFILE PLATES ARE ENGINEERED TO AUTOMATICALLY REACT TO THE MOMENTUM OF A FRESH AIR STREAM, WITHOUT THE NEED FOR ANY MOTORS OR ACTUATORS TO MECHANICALLY ADJUST THEM. WITH THIS FEATURE, ALL DF UNITS ARE DESIGNED FOR DEMAND CONTROL VENTILATION (DCV) REQUIREMENTS.

CERTIFICATIONS:
ALL PROFILE PLATE ASSEMBLIES SHALL BE INCLUDED IN THE DF UNITS ETL LISTING AND COMPLY WITH COMBINED SAFETY STANDARDS ANSI Z83.4 AND CSA 3.7 (NON-RECIRCULATING DF HEATERS) AND ANSI Z83.18 (RECIRCULATING DF HEATERS).

GENERAL CONSTRUCTION:
-PROFILE PLATES SHALL BE FORMED FROM G90 GALVANIZED STEEL.
-PROFILE PLATES SHALL VARY IN SIZE PER UNIT.
-PROFILE PLATES SHALL BE MOUNTED ALONG THE SAME PLANE AS THE DISCHARGE OF THE BURNER.
-DESIGN SHALL INCORPORATE PROPERLY TORQUED, PERMANENTLY MOUNTED SPRING HINGES.
-SPRING HINGES SHALL BE MADE FROM PLATED STEEL.

REVISIONS	
DESCRIPTION	DATE:
△	
△	
△	
△	

www.captiveair.com

Southern California Office

3002 Dow Ave., Suite 410, Tustin, CA 92780 PHONE: (714) 957-1500 FAX: (919) 227-5975 EMAIL: reg86@captiveair.com

Panda Express - Hamilton OH (D8193)

HAMILTON, OH, 45011

DATE: 3/12/2021
DWG.#: 4793684
DRAWN BY: AH-86
SCALE: 3/4" = 1'-0"
MASTER DRAWING
SHEET NO. 6



PANDA EXPRESS, INC.
1683 Walnut Grove Ave.
Rosemead, California
91770
Telephone: 626.799.9898
Facsimile: 626.372.8288

All ideas, designs, arrangement and plans indicated or represented by this drawing are the property of Panda Express Inc. and were created for use on this specific project. None of these ideas, designs, arrangements or plans may be used by or disclosed to any person, firm, or corporation without the written permission of Panda Express Inc.

REVISIONS:

ISSUE DATE:

1st	BUILDING PERMIT SET	04-02-21

DRAWN BY: KB

PANDA PROJECT #: S8-22-D8193
PANDA STORE #: -
ARCH PROJECT #: 20044.021

FOR REFERENCE ONLY

8813 PENROSE LANE, SUITE 400
LEWES, KS 66219
ph: 913.649.8181 • fx: 913.649.1275

PANDA EXPRESS
TRUE WARM & WELCOME
1485 MAIN ST.
HAMILTON, OH 45013

M-405
HOOD DETAIL PLAN

TRUE WARM & WELCOME 2300 R5

ELECTRICAL PACKAGE - JOB#4793684

NO	TAG	PACKAGE #	LOCATION	SWITCHES		OPTION	FANS CONTROLLED				
				LOCATION	QUANTITY		TYPE	Ø	HP	VOLT	FLA
1		SC-321110FP-SEP	WALL UTILITY CABINET LEFT	08 - SHIP LOOSE W/ PREWIRE	1 LIGHT 1 FAN	SMART CONTROLS THERMOSTATIC CONTROL	EXHAUST	3	2.000	208	5.9
							EXHAUST	3	2.000	208	5.9
							SUPPLY	3	5.000	208	15.0

JOB NO
4793684

MODEL NUMBER
SC-321110FP-SEP

DRAWN BY

SCHEMATIC TYPE
INSTALL

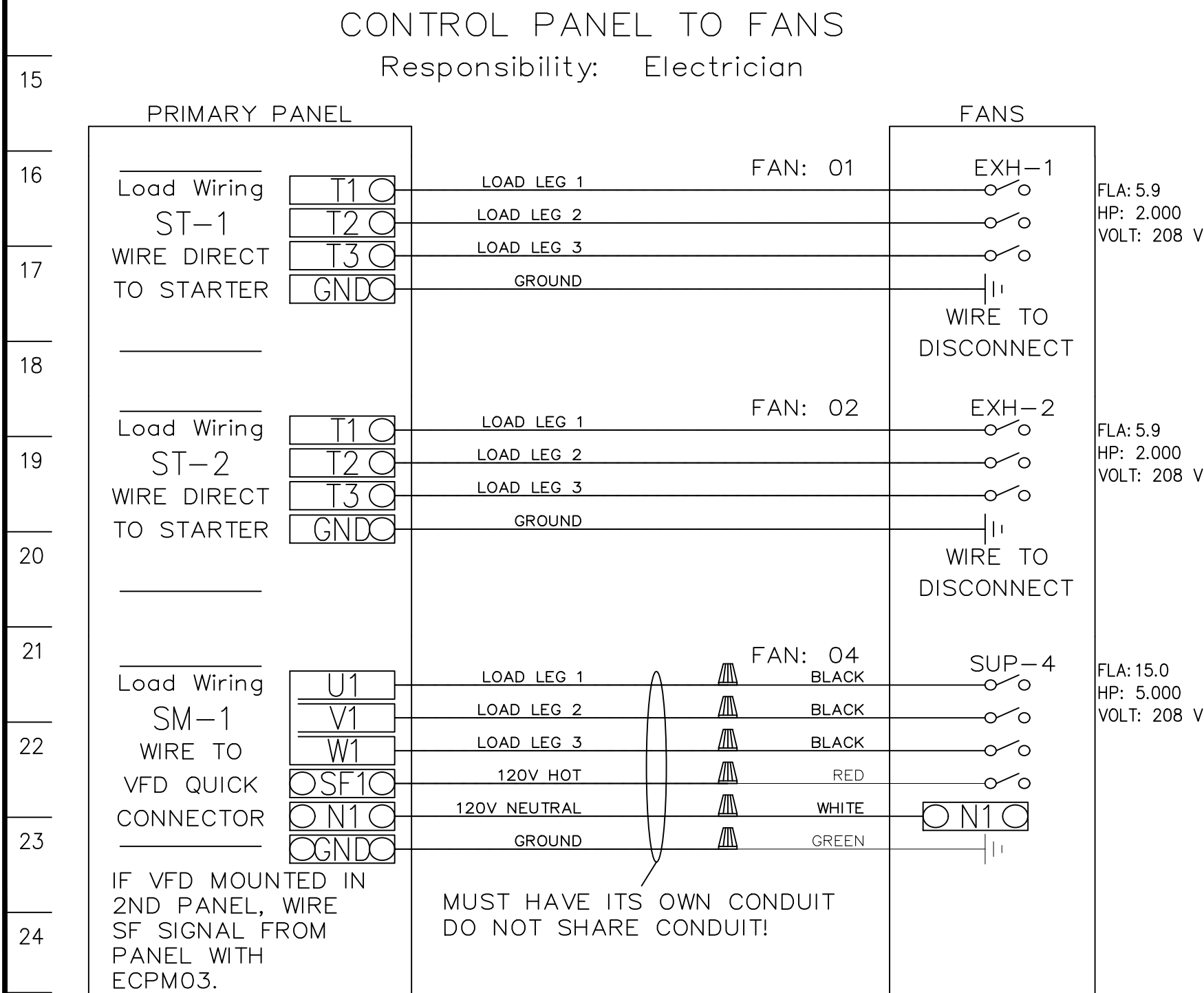
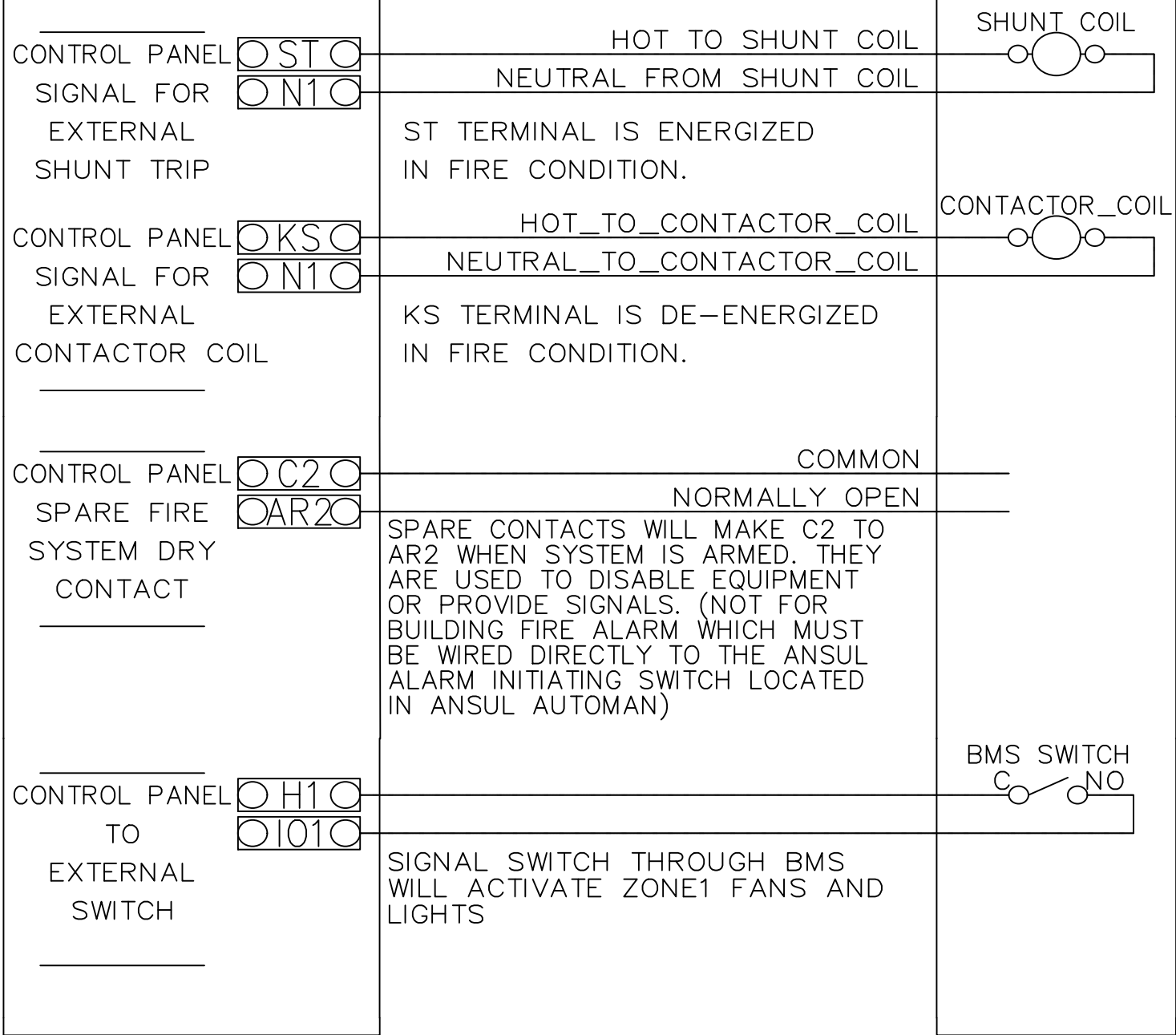
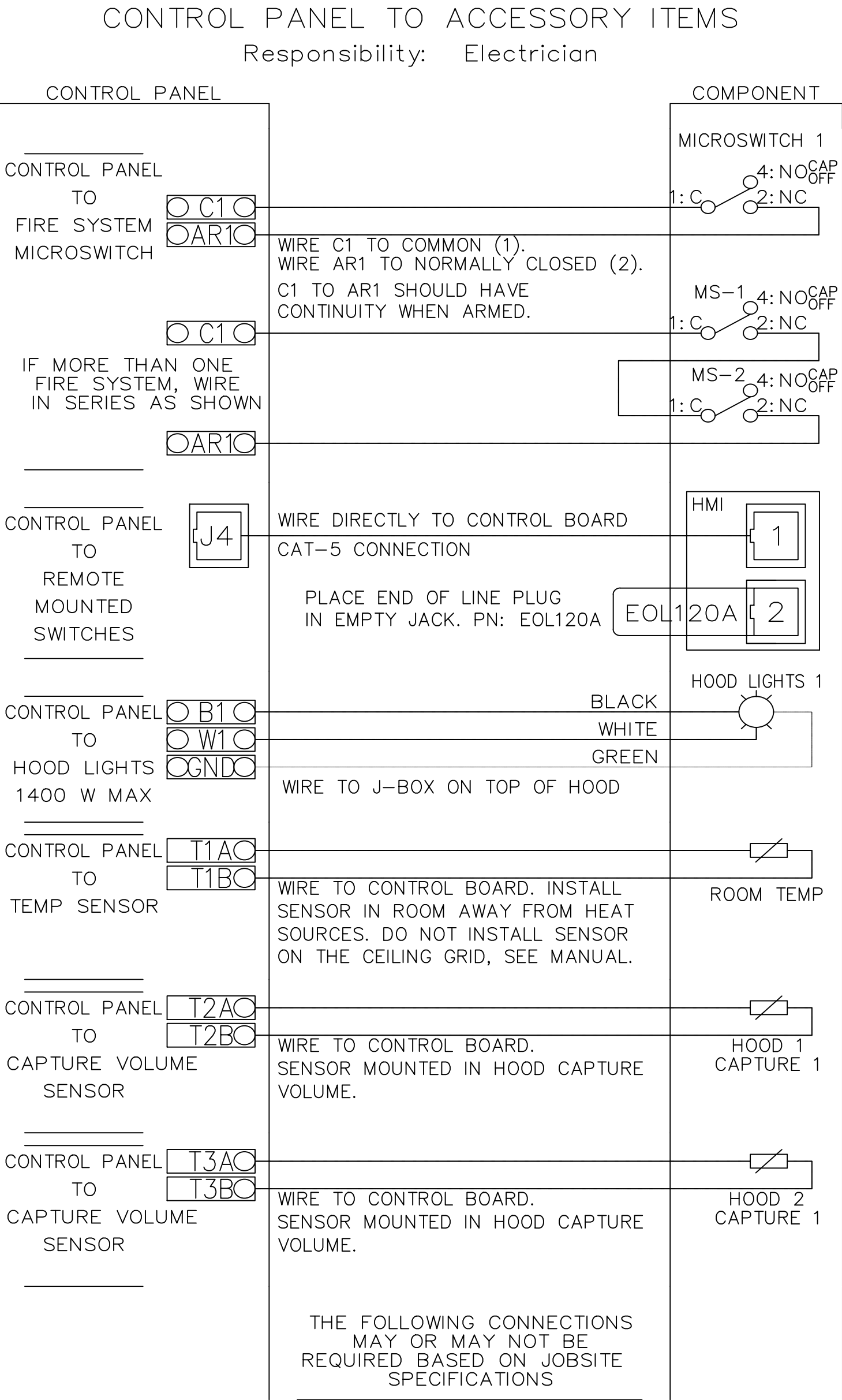
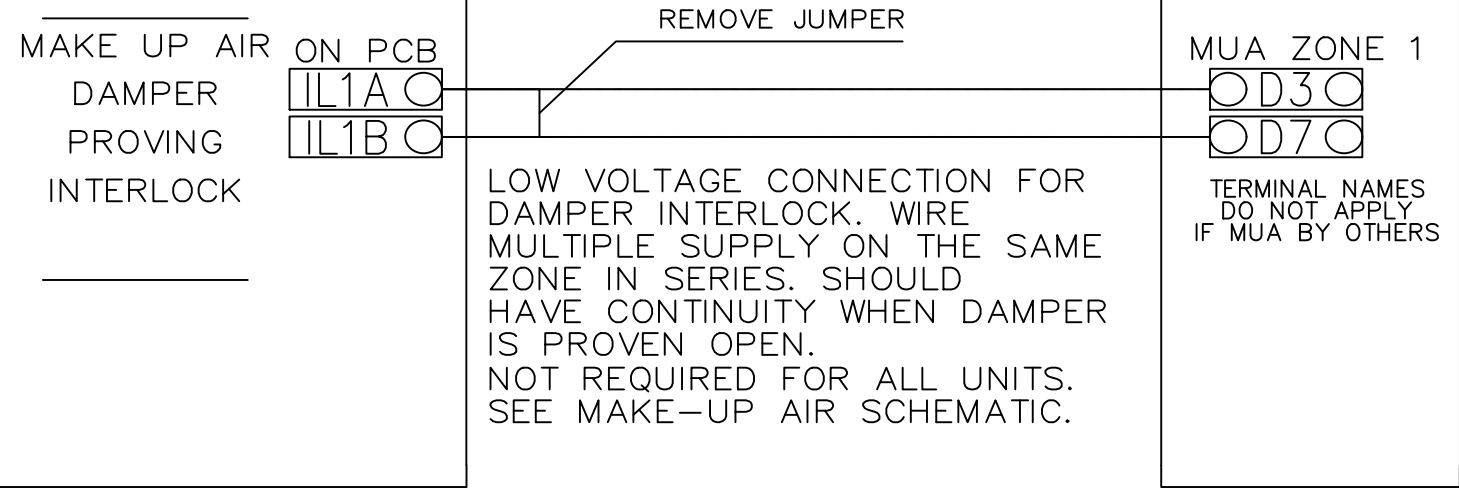
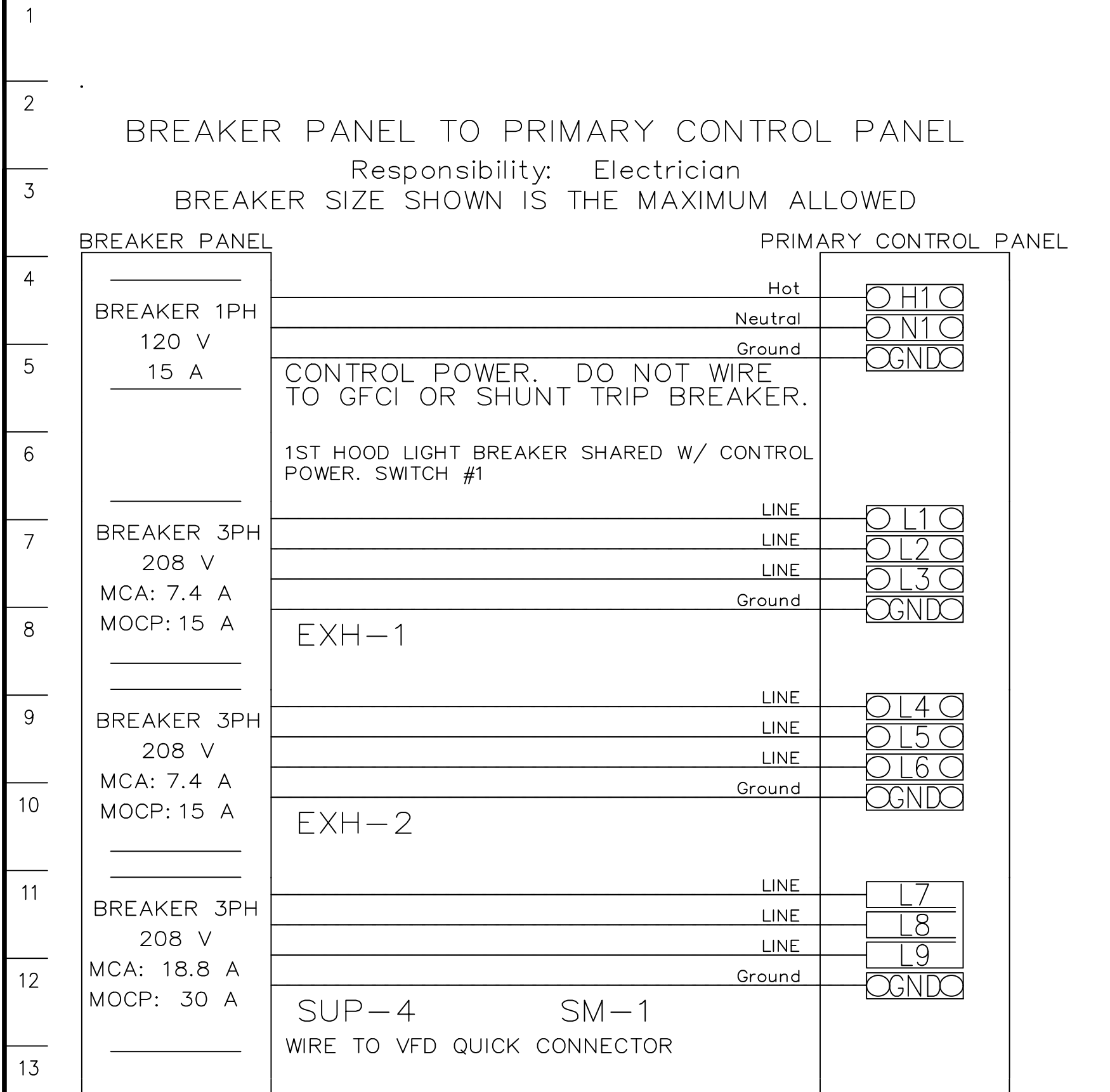
DESCRIPTION OF OPERATION:

3 Phase w/ control for 2 Exhaust Fans, 1 Supply Fan, Exhaust on in Fire, Lights out in Fire, Fan(s) On/Off Thermostatically Controlled. Separate Breaker input for each Fan. Room temperature sensor shipped loose for field installation. INVERTER DUTY 3 PHASE MOTOR REQUIRED FOR USE WITH VFD.

JOB NAME
Panda Express - Hamilton OH (...)

DATE
3/12/2021

DWG NO
ECP #1-1



REVISIONS

DESCRIPTION DATE:

www.captiveinc.com

Southern California Office

3002 Dow Ave., Suite 410, Tustin, CA 92780 PHONE: (714) 957-1500 FAX: (919) 227-5975 EMAIL: reg86@captiveinc.com

Panda Express - Hamilton OH (D8193)

HAMILTON, OH, 45011

DATE: 3/12/2021

DWG.#: 4793684

DRAWN BY: AH-86

SCALE: 3/4" = 1'-0"

MASTER DRAWING

SHEET NO. 7



PANDA EXPRESS, INC.
1683 Walnut Grove Ave.
Rosemead, California 91770
Telephone: 626.799.9898
Facsimile: 626.372.8288

All ideas, designs, arrangement and plans indicated or represented by this drawing are the property of Panda Express Inc. and were created for use on this specific project. None of these ideas, designs, arrangements or plans may be used by or disclosed to any person, firm, or corporation without the written permission of Panda Express Inc.

REVISIONS:

ISSUE DATE:

1st BUILDING PERMIT SET 04-02-21

DRAWN BY: KB

PANDA PROJECT #: S8-22-D8193

PANDA STORE #: -

ARCH PROJECT #: 20044.021

FOR REFERENCE ONLY

hckloverarchitect

8813 PENROSE LANE, SUITE 400
LENEXA, KS 66219
ph: 913.649.8181 • fx: 913.649.1275

PANDA EXPRESS

TRUE WARM & WELCOME
1485 MAIN ST.
HAMILTON, OH 45013

M-406

HOOD DETAIL PLAN

TRUE WARM & WELCOME 2300 R5

rtm

engineering consultants
9225 Indian Creek Pkwy, Suite 1075
Overland Park, KS 66210
Ohio COA: 05046
913.303.0063 | www.rtmec.com

DUCTWORK #1 PARTS – JOB#4793684 DOUBLE WALL

TAG	PART #	CFM	SP	WEIGHT	VELOCITY	QTY	DESCRIPTION
P1	DW1829DWLT–2R–S	3450	–0.01	50.46	1952.30	1	DOUBLE WALL DUCT – 18" INNER DUCT, 29" LONG – 2 LAYERS REDUCED CLEARANCE – 22" STAINLESS STEEL OUTER SHELL.
P2	DW1847DWAJD–2R–S	3450	–0.009	107.98	1952.30	1	DOUBLE WALL ADJUSTABLE DUCT – 18" INNER DUCT – 2 LAYERS REDUCED CLEARANCE – 22" STAINLESS STEEL OUTER SHELL. MIN LENGTH = 11" / MAX LENGTH = 48.5" / ADJUSTMENT = 30.5" / ADJUSTABLE SECTION MAY NEED TO BE CUT. INCLUDES SINGLE AND DOUBLE WALL "V" CLAMPS.
P3	DW1890DWASY–2R–S	3450	–0.119	45.59	1952.30	1	DOUBLE WALL DUCT – 18" INNER 90 DUCT – 2 LAYERS REDUCED CLEARANCE – 22" STAINLESS STEEL OUTER SHELL.
P4	DW1801DWOFFSETASY–2R–S	3450	–0.003	14.66	1952.30	1	DOUBLE WALL DUCT – 18" INNER DUCT RISER & 1 DEGREE OFFSET – 2 LAYERS REDUCED CLEARANCE – 22" STAINLESS STEEL OUTER SHELL.
P5	DW1827DWAJD–2R–S	3450	–0.006	62.85	1952.30	1	DOUBLE WALL ADJUSTABLE DUCT – 18" INNER DUCT – 2 LAYERS REDUCED CLEARANCE – 22" STAINLESS STEEL OUTER SHELL. MIN LENGTH = 11" / MAX LENGTH = 24.5" / ADJUSTMENT = 13.5" / ADJUSTABLE SECTION MAY NEED TO BE CUT. INCLUDES SINGLE AND DOUBLE WALL "V" CLAMPS.
P6	DW1801DWOFFSETASY–2R–S	3450	–0.003	14.66	1952.30	1	DOUBLE WALL DUCT – 18" INNER DUCT RISER & 1 DEGREE OFFSET – 2 LAYERS REDUCED CLEARANCE – 22" STAINLESS STEEL OUTER SHELL.
P7 ASSEMBLED W/P8	DW18DWTEASY–2R–S	3450	–0.238	55.68	1952.30	1	DOUBLE WALL DUCT – 18" INNER TEE DUCT – 2 LAYERS REDUCED CLEARANCE – 22" STAINLESS STEEL OUTER SHELL.
P8 ASSEMBLED W/P7 O=S	DW18DWACCDOORCOV–2R–S			26.16		1	DOUBLE WALL DUCT – 18" INNER ACCESS DOOR & 22" ACCESS DOOR COVER WITH CLAMPS – 2 LAYERS REDUCED CLEARANCE – 22" STAINLESS STEEL OUTER SHELL.
P9 ASSEMBLED W/P10	DW1835DWLTP–2R–S	3450	–0.012	58.74	1952.30	1	DOUBLE WALL DUCT – 18" INNER DUCT, 35" LONG – 2 LAYERS REDUCED CLEARANCE – 22" STAINLESS STEEL OUTER SHELL – USED WITH TRANSITION PLATES
P10 ASSEMBLED W/P9	DW2618TPDBEX	3450		9.00	1952.30	1	DUCT TO CURB TRANSITION 3/4" DOWN TURN, 26 1/2" CURB TO 18" DUCT, 16 GA ALUMINIZED, USED ON NCA16FA / NCA16HPFA & NCA18FA / NCA18HPFA. TRANSITION PLATE OD IS 27.00" DESIGNED FOR USE WITH EXHAUST FAN. NON-STANDARD PART.
SYSTEM AT P10			–1.0353	0.00			
	3M–2000PLUS			0.80		3	DUCT – 3M FIRE BARRIER 2000 PLUS SILICONE – USED AS SEALANT TO SEAL DUCT JOINTS.
	DW18DWCLASY–2R–S			8.70		3	DUCT – 18" DUCT – 22" DOUBLE "V" CLAMP – 2R INSULATION & SINGLE "V" CLAMP INCLUDED – REDUCED CLEARANCE.
TOTAL WEIGHT				474.28			

DOUBLE WALL FACTORY BUILT DUCTWORK

- ALL DUCTWORK IS REQUIRED TO BE INSTALLED WITH THE MAXIMUM SUPPORT SPACING LISTED BELOW.
- FOR A COMPLETE LIST OF APPROVED SUPPORT METHODS, SEE THE ENTIRE INSTALLATION AND OPERATION MANUAL
- DUCTWORK SHALL SLOPE NOT LESS THAN 1/16" PER LINEAR FOOT TOWARDS THE HOOD OR AN APPROVED GREASE COLLECTION RESERVOIR.
- WHERE HORIZONTAL DUCTS EXCEED 75 FEET IN LENGTH, THE SLOPE SHALL NOT BE LESS THAN 3/16" PER LINEAR FOOT.

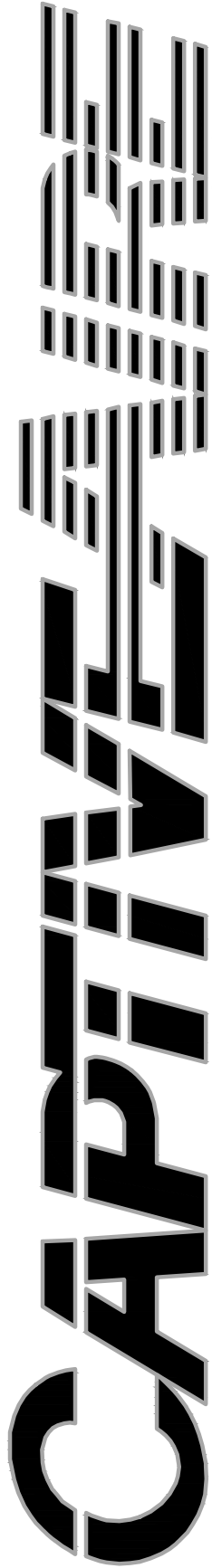
HORIZONTAL	
DUCT DIAMETER	SUPPORT SPACING (FT)
5"	7'
6"	7'
7"	7'
8"	7'
10"	7'
12"	7'
14"	7'
16"	7'
18"	5'
20"	5'
22"	5'
24"	5'
26"	5'
28"	5'
30"	5'
32"	5'
34"	5'
36"	5'

VERTICAL			
TYPE	WALL SUPPORT (FT)	CURB SUPPORT (FT)	FLOOR SUPPORT (FT)
2R & 2R HT (5"–16")	20'	24'	24'
2R (18")	18'	24'	24'
3R & 3Z (5"–24")	10'	24'	24'
3Z (26" –36")	10'	20'	20'

DO NOT LEAK TEST USING SMOKE BOMBS CONTAINING CHLORINES/CHLORIDES. CONSULT WITH CAPTIVEAIRE FOR PROPER LEAK TESTING METHODS.

REVISIONS

DESCRIPTION	DATE:
Δ	
Δ	
Δ	
Δ	



www.captiveaire.com

Southern California Office

3002 Dow Ave., Suite 410, Tustin, CA 92780 PHONE: (714) 957-1500 FAX: (919) 227-5975 EMAIL: reg88@captiveaire.com

Panda Express – Hamilton OH (D8193)

HAMILTON, OH, 45011

DATE: 3/12/2021

DWG.#: 4793684

DRAWN BY: AH–86

SCALE: 3/4" = 1'–0"

MASTER DRAWING

SHEET NO.

8



PANDA EXPRESS, INC.
1683 Walnut Grove Ave.
Rosemead, California
91770
Telephone: 626.799.9898
Facsimile: 626.372.8288

All ideas, designs, arrangement and plans indicated or represented by this drawing are the property of Panda Express Inc. and were created for use on this specific project. None of these ideas, designs, arrangements or plans may be used by or disclosed to any person, firm, or corporation without the written permission of Panda Express Inc.

REVISIONS:

ISSUE DATE:

1st	BUILDING PERMIT SET	04-02-21

DRAWN BY: KB

PANDA PROJECT #: S8-22-D8193
PANDA STORE #: -
ARCH PROJECT #: 20044.021

FOR REFERENCE ONLY



8813 PENROSE LANE, SUITE 400
LENEXA, KS 66219
ph: 913.649.8181 • fx: 913.649.1275

PANDA EXPRESS
TRUE WARM & WELCOME
1485 MAIN ST.
HAMILTON, OH 45013

M-407

HOOD DETAIL PLAN

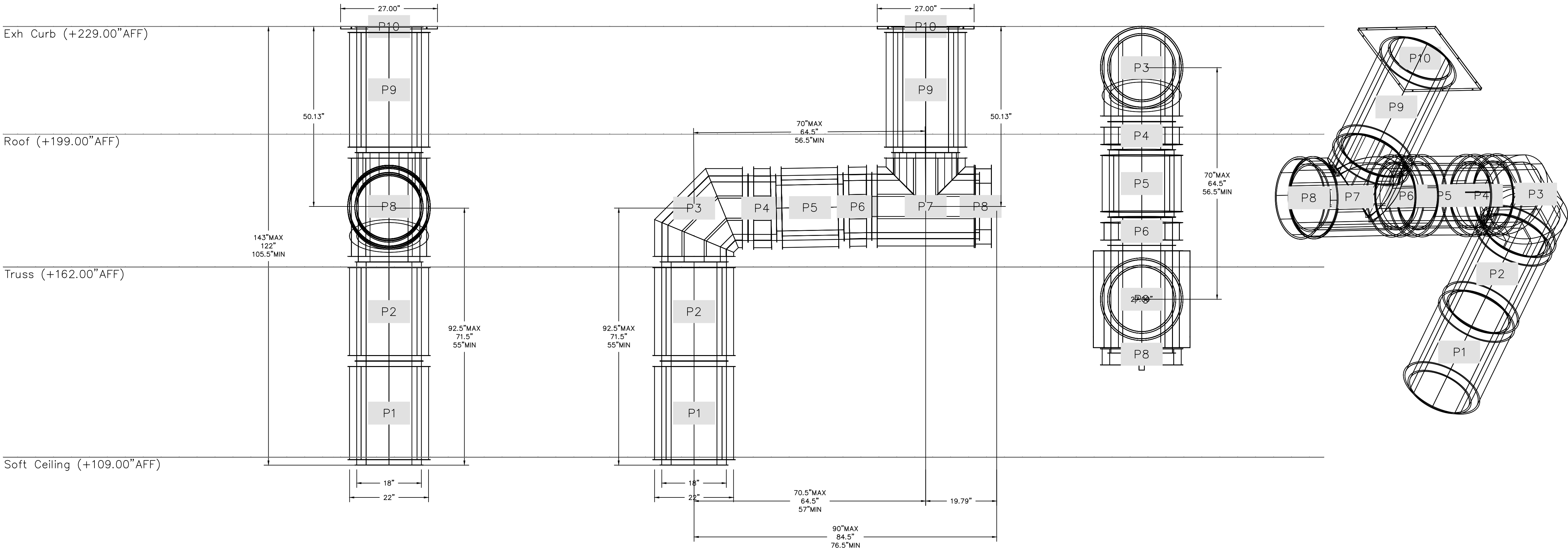
TRUE WARM & WELCOME 2300 R5

DUCTWORK #1 FRONT VIEW

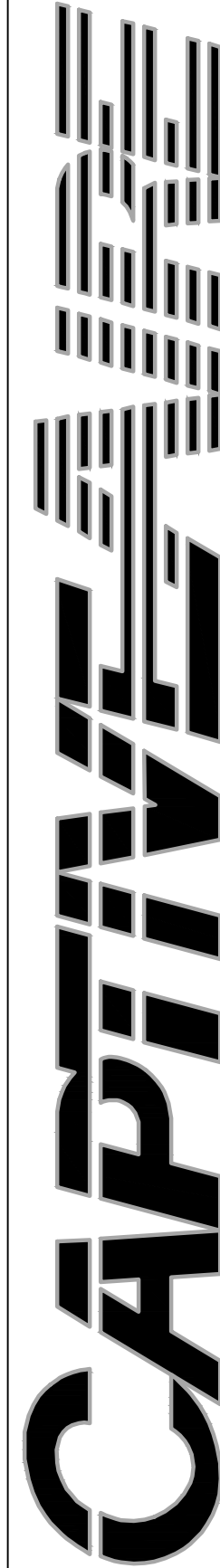
DUCTWORK #1 SIDE VIEW

DUCTWORK #1 TOP VIEW

DUCTWORK #1 SE VIEW



REVISIONS	
DESCRIPTION	DATE:



Southern California Office
3002 Dow Ave., Suite 410, Tustin, CA 92780 PHONE: (714) 957-1500 FAX: (919) 227-5975 EMAIL: reg86@captiveaire.com

Panda Express – Hamilton OH (D8193)
HAMILTON, OH, 45011

DATE: 3/12/2021
DWG.#: 4793684
DRAWN BY: AH-86
SCALE: 3/4" = 1'-0"
MASTER DRAWING
SHEET NO. 9



PANDA EXPRESS, INC.
1683 Walnut Grove Ave.
Rosemead, California
91770
Telephone: 626.799.9898
Facsimile: 626.372.8288

All ideas, designs, arrangement and plans indicated or represented by this drawing are the property of Panda Express Inc. and were created for use on this specific project. None of these ideas, designs, arrangements or plans may be used by or disclosed to any person, firm, or corporation without the written permission of Panda Express Inc.

REVISIONS:

ISSUE DATE:

1st	BUILDING PERMIT SET	04-02-21

DRAWN BY: KB

PANDA PROJECT #: S8-22-D8193
PANDA STORE #: -
ARCH PROJECT #: 20044.021

FOR REFERENCE ONLY

**hckloverarchitect**
8813 PENROSE LANE, SUITE 400
LENEXA, KS 66219
ph: 913.649.8181 • fx: 913.649.1275

PANDA EXPRESS
TRUE WARM & WELCOME
1485 MAIN ST.
HAMILTON, OH 45013

M-408

HOOD DETAIL PLAN

TRUE WARM & WELCOME 2300 R5

**rtm**
engineering consultants
9225 Indian Creek Pkwy, Suite 1075
Overland Park, KS 66210
Ohio COA: 05046
913.303.0063 | www.rtmec.com

DUCTWORK #2 PARTS – JOB#4793684 DOUBLE WALL

TAG	PART #	CFM	SP	WEIGHT	VELOCITY	QTY	DESCRIPTION
P1	DW1829DWLT–2R–S	3450	–0.01	50.46	1952.30	1	DOUBLE WALL DUCT – 18" INNER DUCT, 29" LONG – 2 LAYERS REDUCED CLEARANCE – 22" STAINLESS STEEL OUTER SHELL.
P2	DW1847DWAJD–2R–S	3450	–0.009	107.98	1952.30	1	DOUBLE WALL ADJUSTABLE DUCT – 18" INNER DUCT – 2 LAYERS REDUCED CLEARANCE – 22" STAINLESS STEEL OUTER SHELL. MIN LENGTH = 11" / MAX LENGTH = 48.5" / ADJUSTMENT = 30.5" / ADJUSTABLE SECTION MAY NEED TO BE CUT. INCLUDES SINGLE AND DOUBLE WALL "V" CLAMPS.
P3	DW1890DWASY–2R–S	3450	–0.119	45.59	1952.30	1	DOUBLE WALL DUCT – 18" INNER 90 DUCT – 2 LAYERS REDUCED CLEARANCE – 22" STAINLESS STEEL OUTER SHELL.
P4	DW1801DWOFFSETASY–2R–S	3450	–0.003	14.66	1952.30	1	DOUBLE WALL DUCT – 18" INNER DUCT RISER & 1 DEGREE OFFSET – 2 LAYERS REDUCED CLEARANCE – 22" STAINLESS STEEL OUTER SHELL.
P5	DW1827DWAJD–2R–S	3450	–0.006	62.85	1952.30	1	DOUBLE WALL ADJUSTABLE DUCT – 18" INNER DUCT – 2 LAYERS REDUCED CLEARANCE – 22" STAINLESS STEEL OUTER SHELL. MIN LENGTH = 11" / MAX LENGTH = 24.5" / ADJUSTMENT = 13.5" / ADJUSTABLE SECTION MAY NEED TO BE CUT. INCLUDES SINGLE AND DOUBLE WALL "V" CLAMPS.
P6	DW1801DWOFFSETASY–2R–S	3450	–0.003	14.66	1952.30	1	DOUBLE WALL DUCT – 18" INNER DUCT RISER & 1 DEGREE OFFSET – 2 LAYERS REDUCED CLEARANCE – 22" STAINLESS STEEL OUTER SHELL.
P7 ASSEMBLED W/P8	DW18DWTEASY–2R–S	3450	–0.238	55.68	1952.30	1	DOUBLE WALL DUCT – 18" INNER TEE DUCT – 2 LAYERS REDUCED CLEARANCE – 22" STAINLESS STEEL OUTER SHELL.
P8 ASSEMBLED W/P7 O=S	DW18DWACCDOORCOV–2R–S			26.16		1	DOUBLE WALL DUCT – 18" INNER ACCESS DOOR & 22" ACCESS DOOR COVER WITH CLAMPS – 2 LAYERS REDUCED CLEARANCE – 22" STAINLESS STEEL OUTER SHELL.
P9 ASSEMBLED W/P10	DW1835DWLTTP–2R–S	3450	–0.012	58.74	1952.30	1	DOUBLE WALL DUCT – 18" INNER DUCT, 35" LONG – 2 LAYERS REDUCED CLEARANCE – 22" STAINLESS STEEL OUTER SHELL – USED WITH TRANSITION PLATES
P10 ASSEMBLED W/P9	DW2618TPDBEX	3450		9.00	1952.30	1	DUCT TO CURB TRANSITION 3/4" DOWN TURN, 26 1/2" CURB TO 18" DUCT, 16 GA ALUMINIZED, USED ON NCA16FA / NCA16HPFA & NCA18FA / NCA18HPFA. TRANSITION PLATE OD IS 27.00" DESIGNED FOR USE WITH EXHAUST FAN. NON-STANDARD PART.
SYSTEM AT P10			–1.0353	0.00			
	3M–2000PLUS			0.80		3	DUCT – 3M FIRE BARRIER 2000 PLUS SILICONE – USED AS SEALANT TO SEAL DUCT JOINTS.
	DW18DWCLASY–2R–S			8.70		3	DUCT – 18" DUCT – 22" DOUBLE "V" CLAMP – 2R INSULATION & SINGLE "V" CLAMP INCLUDED – REDUCED CLEARANCE.
TOTAL WEIGHT				474.28			

DOUBLE WALL FACTORY BUILT DUCTWORK

- ALL DUCTWORK IS REQUIRED TO BE INSTALLED WITH THE MAXIMUM SUPPORT SPACING LISTED BELOW.
- FOR A COMPLETE LIST OF APPROVED SUPPORT METHODS, SEE THE ENTIRE INSTALLATION AND OPERATION MANUAL
- DUCTWORK SHALL SLOPE NOT LESS THAN 1/16" PER LINEAR FOOT TOWARDS THE HOOD OR AN APPROVED GREASE COLLECTION RESERVOIR.
- WHERE HORIZONTAL DUCTS EXCEED 75 FEET IN LENGTH, THE SLOPE SHALL NOT BE LESS THAN 3/16" PER LINEAR FOOT.

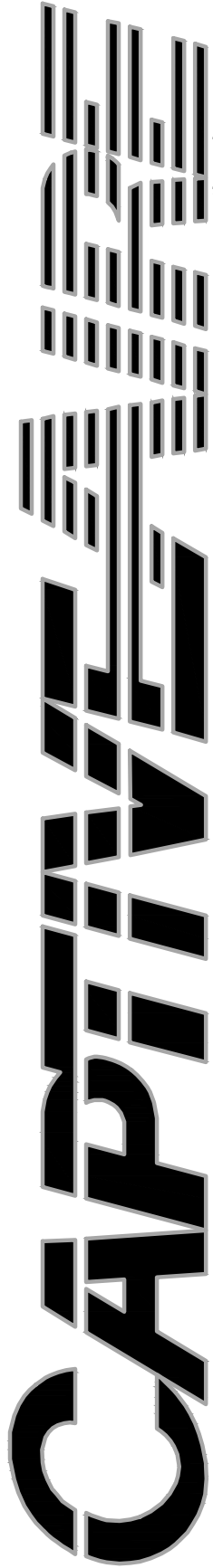
HORIZONTAL	
DUCT DIAMETER	SUPPORT SPACING (FT)
5"	7'
6"	7'
7"	7'
8"	7'
10"	7'
12"	7'
14"	7'
16"	7'
18"	5'
20"	5'
22"	5'
24"	5'
26"	5'
28"	5'
30"	5'
32"	5'
34"	5'
36"	5'

VERTICAL			
TYPE	WALL SUPPORT (FT)	CURB SUPPORT (FT)	FLOOR SUPPORT (FT)
2R & 2R HT (5"–16")	20'	24'	24'
2R (18")	18'	24'	24'
3R & 3Z (5"–24")	10'	24'	24'
3Z (26" –36")	10'	20'	20'

DO NOT LEAK TEST USING SMOKE BOMBS CONTAINING CHLORINES/CHLORIDES. CONSULT WITH CAPTIVEAIRE FOR PROPER LEAK TESTING METHODS.

REVISIONS

DESCRIPTION	DATE:
Δ	
Δ	
Δ	
Δ	



www.captiveaire.com

Southern California Office

3002 Dow Ave., Suite 410, Tustin, CA 92780 PHONE: (714) 957-1500 FAX: (919) 227-5975 EMAIL: reg88@captiveaire.com

Panda Express – Hamilton OH (D8193)

HAMILTON, OH, 45011

DATE: 3/12/2021

DWG.#: 4793684

DRAWN BY: AH–86

SCALE: 3/4" = 1'–0"

MASTER DRAWING

SHEET NO.

10



PANDA EXPRESS, INC.
1683 Walnut Grove Ave.
Rosemead, California
91770
Telephone: 626.799.9898
Facsimile: 626.372.8288

All ideas, designs, arrangement and plans indicated or represented by this drawing are the property of Panda Express Inc. and were created for use on this specific project. None of these ideas, designs, arrangements or plans may be used by or disclosed to any person, firm, or corporation without the written permission of Panda Express Inc.

REVISIONS:

ISSUE DATE:

1st	BUILDING PERMIT SET	04-02-21

DRAWN BY: KB

PANDA PROJECT #: S8-22-D8193
PANDA STORE #: -
ARCH PROJECT #: 20044.021

FOR REFERENCE ONLY



8813 PENROSE LANE, SUITE 400
LENEXA, KS 66219
ph: 913.649.8181 • fx: 913.649.1275

PANDA EXPRESS
TRUE WARM & WELCOME
1485 MAIN ST.
HAMILTON, OH 45013

M-409

HOOD DETAIL PLAN

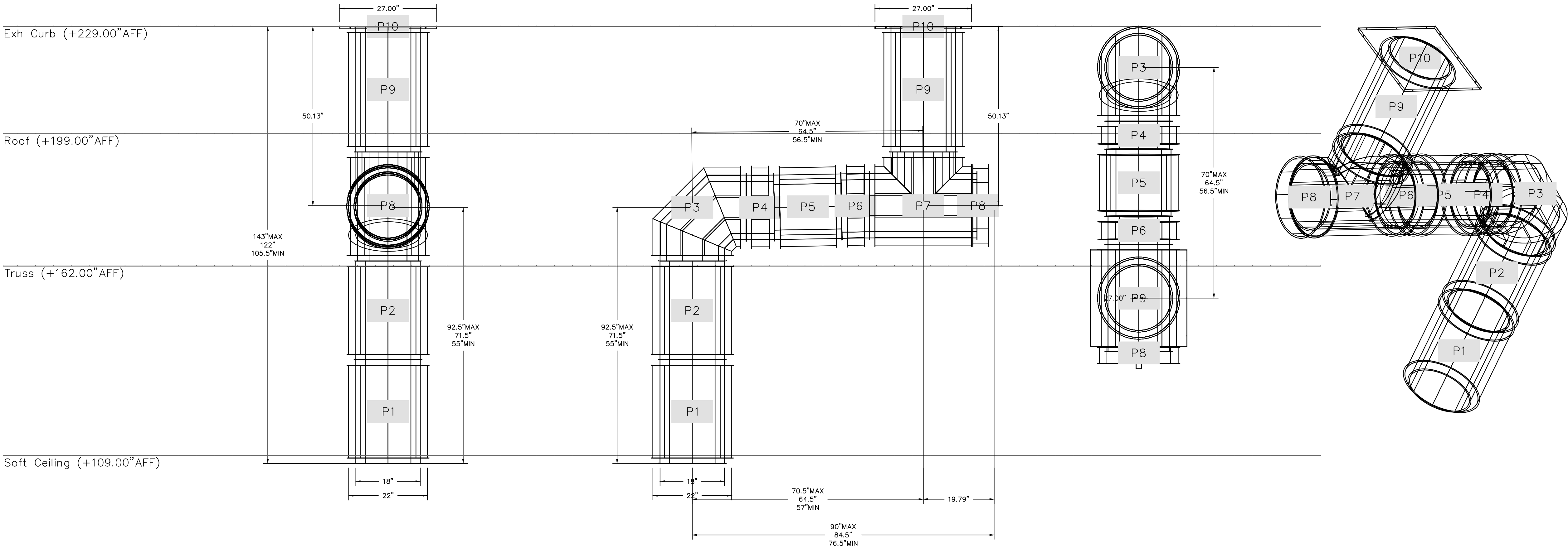
TRUE WARM & WELCOME 2300 R5

DUCTWORK #2 FRONT VIEW

DUCTWORK #2 SIDE VIEW

DUCTWORK #2 TOP VIEW

DUCTWORK #2 SE VIEW



REVISIONS	
DESCRIPTION	DATE:

Southern California Office
3002 Dow Ave., Suite 410, Tustin, CA 92780 PHONE: (714) 957-1500 FAX: (919) 227-5975 EMAIL: reg88@captiveaire.com

Panda Express – Hamilton OH (D8193)
HAMILTON, OH, 45011

DATE: 3/12/2021
DWG.#: 4793684
DRAWN BY: AH-86
SCALE: 3/4" = 1'-0"
MASTER DRAWING
SHEET NO. 11



PANDA EXPRESS, INC.
1683 Walnut Grove Ave.
Rosemead, California
91770
Telephone: 626.799.9898
Facsimile: 626.372.8288

All ideas, designs, arrangement and plans indicated or represented by this drawing are the property of Panda Express Inc. and were created for use on this specific project. None of these ideas, designs, arrangements or plans may be used by or disclosed to any person, firm, or corporation without the written permission of Panda Express Inc.

REVISIONS:

ISSUE DATE:

1st	BUILDING PERMIT SET	04-02-21

DRAWN BY: KB

PANDA PROJECT #: S8-22-D8193
PANDA STORE #: -
ARCH PROJECT #: 20044.021

FOR REFERENCE ONLY

8813 PENROSE LANE, SUITE 400
LENEXA, KS 66219
ph: 913.649.8181 • fx: 913.649.1275

PANDA EXPRESS
TRUE WARM & WELCOME
1485 MAIN ST.
HAMILTON, OH 45013

M-410

HOOD DETAIL PLAN

TRUE WARM & WELCOME 2300 R5

engineering consultants
9225 Indian Creek Pkwy, Suite 1075
Overland Park, KS 66210
Ohio COA: 05046
913.303.0063 | www.rtmec.com



Scale: NO SCALE | M-500

