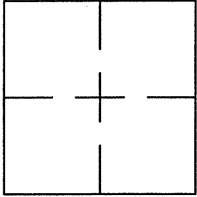


CORNER RECORDDocument Number CR 8561City of OAKLANDCounty of ALAMEDA, CaliforniaBrief Legal Description WELL MONUMENT LOCATED WITHIN GOLF LINKS ROAD.**CORNER RECORD**

Government Corner ☐ Control ☐
 Meander ☐ Property ☐
 Rancho ☐ Other ☒
 Date of Survey 6/21/16

COORDINATES
(Optional)

N. 2102624.0±
 E. 6088031.4±
 Zone 3 Datum NAD 83
 Elev. _____

Corner — Left as found ☒ Found and tagged ☐ Established ☐ Reestablished ☐ Rebuilt ☐

Identification and type of corner found: Evidence used to identify or procedure used to establish or reestablish the corner:
FOUND BRASS DISC WITH NIPPLE IN MONUMENT WELL LOCATED WITHIN GOLF LINKS ROAD.

THIS POINT WAS REFERENCED PRIOR TO A CONSTRUCTION PROJECT IN THE VICINITY.

A description of the physical condition of the monument as found and as set or reset: _____

FOUND AND SET POINTS AS SHOWN ON PAGE 2.

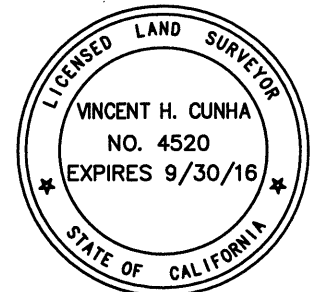
THE TIES SHOWN HEREON ARE FOR THE PURPOSE OF PERPETUATING FOUND MONUMENTATION.

NO CLAIM IS MADE AS TO THE RELATIONSHIP OF THE POINTS OR LINES SHOWN HEREON TO TRUE BOUNDARY LOCATIONS.

SURVEYOR'S STATEMENT

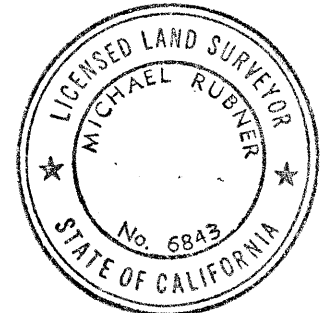
This Corner Record was prepared by me or under my direction in conformance with the Land Surveyors' Act on July 9, 2016.

Signed Vincent H. Cunha L.S. Number LS 4520
 VINCENT H. CUNHA

**COUNTY SURVEYOR'S STATEMENT**

This Corner Record was received 8 JULY 2016 and examined and filed 25 JULY 2016.

Signed Michael Rubner Title COUNTY SURVEYOR



County Surveyor's Comment _____



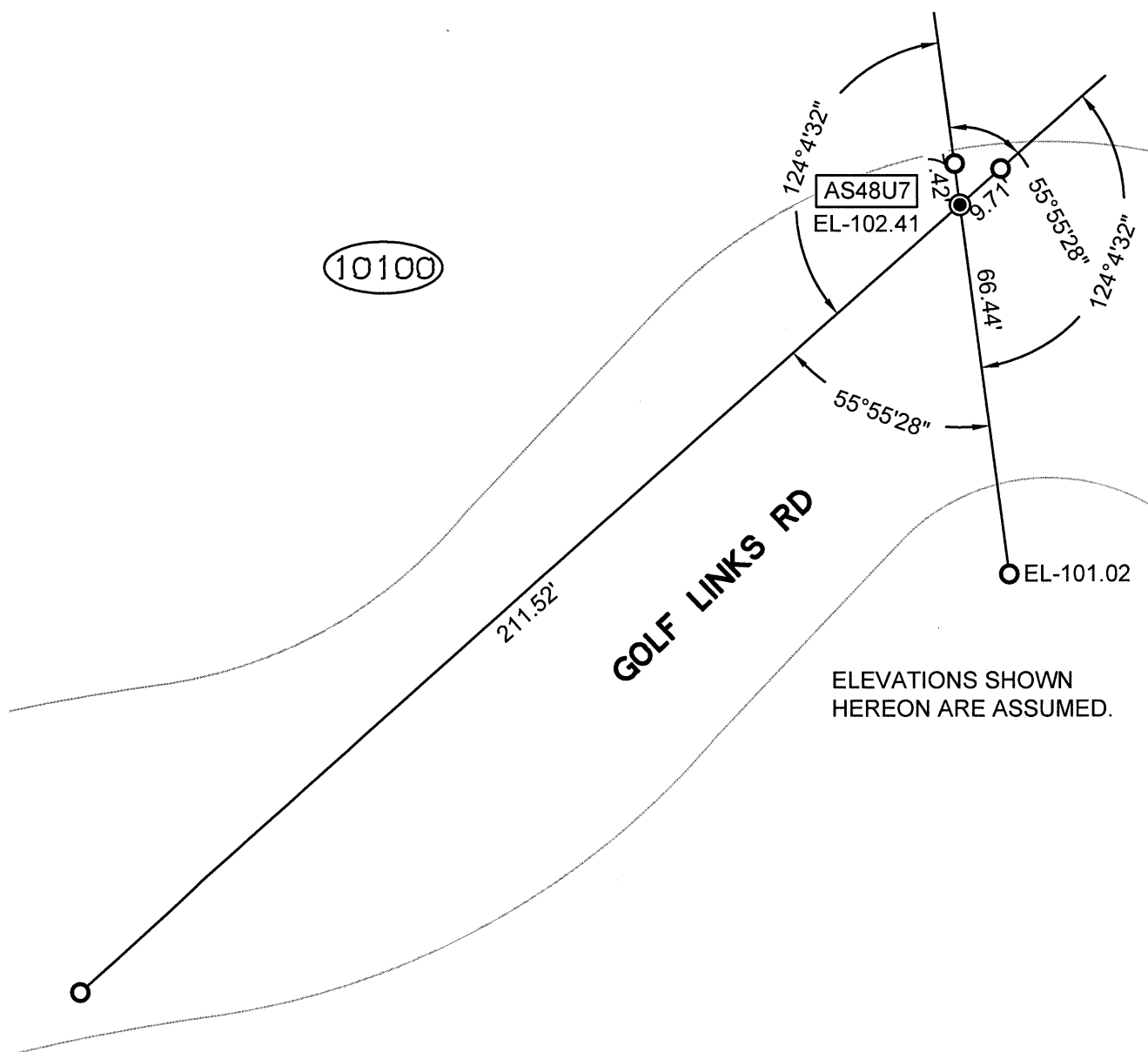
SCALE: 1"=30'

LEGEND

- FOUND BRASS DISC WITH NIPPLE IN MONUMENT WELL
- ⊗ SET CUT CROSS IN WALK
- ✕ SET CUT CROSS IN CURB
- SET REBAR & CAP STAMPED "CEI RP"

(1959) REFERENCE STREET ADDRESS

AA###A# ALAMEDA COUNTY MONUMENT ID



ELEVATIONS SHOWN
HEREON ARE ASSUMED.