

THIS MATERIAL CONTAINS INFORMATION AFFECTING  
THE NATIONAL DEFENSE OF THE UNITED STATES  
WITHIN THE MEANING OF THE ESPIONAGE LAWS, TITLE  
18 U.S.C., SECTIONS 793 & 794, THE TRANSMISSION  
OR REVELATION OF WHICH IN ANY MANNER TO AN  
UNAUTHORIZED PERSON IS PROHIBITED BY LAW.

# SUBMARINE SSG577

## BOOKLET OF GENERAL PLANS

DOWNGRADED AT 12 YEAR  
INTERVALS; NOT AUTOMATICALLY  
DECLASSIFIED. DOD DIR 5200.10

CORRECTED TO SUIT SHIP			SATISFACTORY TO COMMANDING OFFICER	
PLACE	DATE	APPROVED	DATE	SIGNATURE
PTSMH NAVSHIPYD	11/25/58	<i>CH Madbury FDR</i>	11/25/58	<i>Charles G. ...</i>
PTSMH NAVSHIPYD	7/27/59	<i>R. G. ...</i>	7/27/59	<i>Charles G. ...</i>
PEARL HARBOR NAVAL SHIPYARD	<del>7/27/59</del>	<i>W. H. Friedman</i>	3/14/62	<i>W.H.F.</i>

### ORDER OF PLANS

SHEET NO.1 COVER  
SHEET NO.2 GEN DIMENSIONS & DATA  
SHEET NO.3 OUTBOARD PROFILE  
SHEET NO.4 INBOARD PROFILE  
SHEET NO.5 MAIN DECK  
SHEET NO.6 PLATFORM DECK  
SHEET NO.7 HOLD  
SHEET NO.8 MIDSHIP & TYPE CROSS SECT'S

NAVAL SHIPYARD		PORTSMOUTH, N.H.	
DRAWN BY I.A. FEELEY - W.E.C.		DATE 1-22-57	
CHECKED BY R.R.H.		Chalk	
UNIT HEAD R. HUNTINGTON		E. J. Bayonides HEAD ENGINEER	
SECTION HEAD A. R. Hinkley		E. J. Bayonides TECHNICAL OFFICER	
BRANCH HEAD A. R. Hinkley		E. J. Bayonides DESIGN SUPT	
BUSHIPS NO. SSG577-845 -1608697			



CAPACITIES & VOLUMES OF TANKS														
MAIN BALLAST TANKS (GROSS TANK)		GALLONS	TONS		FUEL OIL TANKS		GALLONS	TONS		HYDRAULIC OIL TANKS		GALLONS	TONS	
			FW	OIL				FW	OIL				OIL	FW
NO. 1 MAIN BALLAST		31184	119.11		NO. 3 NORMAL FUEL OIL		27632	105.99	85.81	RESERVE HYDRAULIC OIL		361	1.19	
NO. 2A & 2B MAIN BALLAST		16041	63.96		NO. 6 NORMAL FUEL OIL		10979	40.39	32.84	MISSILE SYS RESERVE HYDRAULIC OIL		202	0.67	
NO. 2C & 2D MAIN BALLAST		28194	107.69		COLLECTING		2574	9.83	7.99	TOTAL		563	1.86	
NO. 2E & 2F MAIN BALLAST		39507	139.84		EXPANSION		4833	18.46	15.01					
NO. 2G & 2H MAIN BALLAST		33819	129.17		CLEAN FUEL OIL NO. 1 95% NET CAP.		271		0.84					
NO. 3A & 3B FUEL BALLAST		23114	88.28		CLEAN FUEL OIL NO. 2 95% NET CAP.		271		0.84	SANITARY TANKS		GALLONS	FW	FW
NO. 4A & 4B FUEL BALLAST		32387	123.70											
NO. 4C & 4D FUEL BALLAST		30918	118.09		SUB TOTAL		46196	174.23	143.33	NO. 1A SAN (FWD)		979		2.20
NO. 5A & 5B MAIN BALLAST		21753	83.09		FUEL BALLAST TANKS (RATED CAPACITY)		84185		261.44	NO. 1B SAN		921		1.99
NO. 6A & 6B MAIN BALLAST		19711	75.29		NO. 5A VARIABLE FUEL OIL 95% NET CAP.		6934		21.53	NO. 2 SAN (MIDSHIP)		973		1.42
TOTAL		273288	1043.82		NO. 5B VARIABLE FUEL OIL 95% NET CAP.		6934		21.53	NO. 3 SAN		1016		3.88
					NO. 7 VARIABLE FUEL OIL 95% NET CAP.		3919		12.17	NO. 4 SAN (AFT)		244		0.93
					TOTAL		148128	174.23	460.00	TOTAL		2729		10.42
VARIABLE BALLAST TANKS (100%)										POTABLE FRESH WATER				
AUXILIARY NO. 1		2901	11.08		MISSILE FUEL OIL TANK NO. 1 (GTBD) 95% CAP.		2018		5.72	NO. 1 (GTBD)		1081	4.01	
AUXILIARY NO. 2		2901	11.08		LUBRICATING OIL TANKS					NO. 2 (PORT)		1081	4.01	
NEGATIVE		7052	26.94		NORMAL LO. NO. 1		1025		3.52	NO. 3 (PORT)		1436	5.33	
FORWARD TRIM		13034	49.78		NORMAL LO. NO. 2 95% NET CAP.		1794		6.16	NO. 4 (PORT)		2124	7.88	
FORWARD WRT		1999	7.04		NORMAL LO. NO. 3		1271		4.36	TOTAL		5722	21.23	
AFTER TRIM		2775	10.60		TOTAL		4090		14.04	BATTERY FRESH WATER				
AFTER WRT		332	1.27							FWD TANKS (PORT & GTBD)		378	1.40	
VARIABLE FUEL OIL NO. 5A		7299	27.88		MAIN ENGINE GUMP NO. 1		212		0.73	AFT TANKS (PORT & GTBD)		382	1.42	
VARIABLE FUEL OIL NO. 5B		7299	27.88		MAIN ENGINE GUMP NO. 2 75% NET CAP.		212		0.73	TOTAL		760	2.82	
VARIABLE FUEL OIL NO. 7		4125	15.76		MAIN ENGINE GUMP NO. 3		209		0.72					
TOTAL		49717	189.91		TOTAL		633		2.18					
RATED CAPACITIES & WATER SEAL														
FUEL BALLAST TANKS		RATED CAPACITY	RESIDUAL WATER & WATER SEAL											
		GALLONS	TONS OIL	GALLONS	TONS FW									
NO. 3A & 3B FUEL BALLAST		22435	69.67	679	2.59	MAIN MOTOR GUMP NO. 1 75% NET CAP.		137	0.47	NOTE: NO REDUCTIONS HAVE BEEN MADE FOR LEAD BALLAST IN MAIN & FUEL BALLAST TANKS.				
NO. 4A & 4B FUEL BALLAST		31587	98.10	800	3.06	MAIN MOTOR GUMP NO. 2 95% NET CAP.		137	0.47					
NO. 4C & 4D FUEL BALLAST		30163	93.67	795	2.88	TOTAL		274	0.94					
TOTAL		84185	261.44	2234	8.53	GRAND TOTAL		4997	17.16					

NOTE: NO DEDUCTIONS HAVE BEEN MADE FOR LEAD BALLAST IN MAIN & FUEL BALLAST TANKS.

PRINCIPAL DIMENSIONS									
LENGTH OVERALL (ACTUAL)					317'-3"				
LENGTH BETWEEN PERPENDICULARS (DESIGNED)					317'-0"				
FWD PERPENDICULAR AFT OF EXTREME POINT OF BOW (DESIGNED)					7"				
BREADTH EXTREME					32'-0"				
DRAFT CONDITION "N" (MEAN)					17'-2"				
HEIGHTS ABOVE BASE LINE (BASE LINE IS AT BOTTOM OF KEEL)									
TOP OF STRENGTH HULL AMIDSHIPS ON E					21'-3"				
TOP OF BRIDGE DECK					47'-1 1/4"				
TOP OF FAIRWAY					52'-0"				
TOP OF NO. 1 PERISCOPE (RAISED)					62'-7 1/2"				
TOP OF NO. 2 PERISCOPE (RAISED)					65'-10 1/2"				
TOP OF SNORKEL INDUCTION HEAD VALVE (RAISED)					64'-1"				
TOP OF AN/BPD-2 RADAR ANT. (RAISED)					68'-3 9/16"				
TOP OF AN/ORD-7 ANT. (RAISED)					66'-10 9/8"				
TOP OF AT-B18/BRG WHIP ANT. (RAISED)					81'-4 1/16"				
TOP OF AG-523/BPK ANT. (RAISED)					61'-8 1/16"				
TOP OF AT-317/BRG ANT. (RETR) (RAISED)					56'-5 1/2"				
TOP OF AG-626/BLR ANT. (RAISED)					69'-1 1/4"				
TOP OF AT-350A/BRG WHIP ANT. (ERECTED)					81'-4"				
TOP OF AT-317/BRG ANT. (FIXED)					53'-10"				
TOP OF COMMUNICATIONS ANT. ATOP NO. 2 PERIS (RAISED)					61'-4 9/16"				
TOP OF COMMUNICATIONS ANT. ATOP NO. 2 PERIS (LOWERED)					54'-1 9/16"				
E OF BOW ANCHOR LIGHT					38'-0"				
E OF MASTHEAD LIGHT					41'-11"				
E OF SIDE LIGHT (PNS)					37'-6 1/2"				
E OF EMERGENCY STERN LIGHT					32'-8 3/8"				
E OF AFT ANCHOR LIGHT					28'-1"				
E OF STERN LIGHT					27'-3"				

FRAME SPACING						
FRAME FP TO 10	30"	FRAME 41 TO 48	25"			
FRAME 10 TO 11	29"	FRAME 48 TO 52	33"			
FRAME 11 TO 12	25"	FRAME 52 TO 53	27"			
FRAME 12 TO E	26"	FRAME 53 TO 54	25"			
FRAME E TO J	30"	FRAME 54 TO 68	33"			
FRAME J TO L	24"	FRAME 68 TO 69	25"			
FRAME L TO S	30"	FRAME 69 TO 70	27"			
FRAME S TO Y	27"	FRAME 70 TO 80	33"			
FRAME Y TO CC	24"	FRAME 80 TO 81	27"			
FRAME CC TO GG	33"	FRAME 81 TO 86	32"			
FRAME GG TO 27	24"	FRAME 86 TO 89	30"			
FRAME 27 TO 28	26"	FRAME 89 TO 92	28"			
FRAME 28 TO 39	33"	FRAME 92 TO 97	26"			
FRAME 39 TO 40	27"	FRAME 97 TO 110	24"			
FRAME 40 TO 41	26"	FRAME 110 TO AP	6"			
NUMBER OF FRAMES 131						
COMPARTMENT FLOODING EFFECT TABULATION & BULKHEAD HOLDING DEPTH						
MAIN WATERTIGHT COMPT	FRAMES	CAPACITY		VCG (FT) ABV BOT OF KEEL	HCG (FT)	
		GAL	TONS FW		FWD FR 43	AFT FR 43
TORPEDO ROOM	12-K	29166	111.40	11.53	113.31	
MISSILE CONTROL	K-27	45023	171.97	13.01	64.66	
FORWARD BATTERY	21-40	44658	170.57	13.15	26.86	
MIDSHIP COMPARTMENT	40-53	48100	183.71	12.25		4.21
AFTER BATTERY	53-69	53822	205.57	13.70		41.04
MACHINERY COMPARTMENT	69-81	50418	192.57	12.58		78.80
STERN ROOM	81-92	48863	186.63	14.22		109.93
MISSILE HANGAR, PORT (GTBD SIMILAR)		40668	159.33	26.15	89.00	
HOLDING DEPTH FOR BULKHEADS BOUNDING ESCAPE COMPARTMENTS IS 850 FEET. OTHER MAIN BULKHEADS 300 FEET.						

CO2 ABSORBENT	
COMPARTMENT	TOTAL
TORPEDO ROOM	97
CPO WC	3
OFFICERS QUARTERS	39
CONTROL ROOM	2
AFTER BATTERY	103
CREWS WC	4
MOTOR ROOM	103
TOTAL 351	

ACCOMMODATIONS			
COMPARTMENT	OFFICERS	CPO	CREW
TORPEDO ROOM			12
OFFICERS & CPO QUARTERS	9	11	
CREW'S QUARTERS			46
STERN ROOM			9
NAVIGATION SYSTEM COMPT			1
TOTAL 9 11 68			

SUBMARINE: SSG577			
GENERAL DIMENSIONS			
SCALE: 1/8"=1'-0" SHEET NO. 2			
SSG577-845 -1608697			

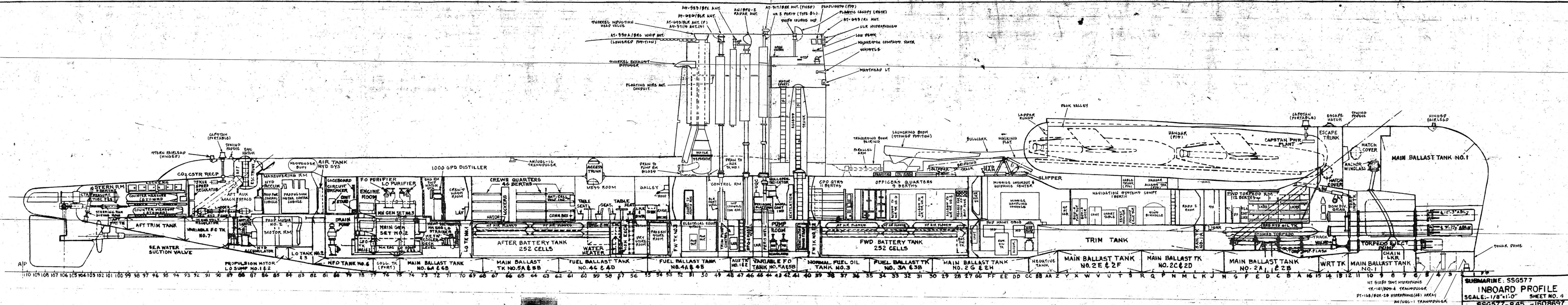
CO <sub>2</sub> ABSORBENT	
COMPARTMENT	TOTAL
TORPEDO ROOM	97
CPO WC	3
OFFICERS QUARTERS	39
CONTROL ROOM	2
AFTER BATTERY	103
CREWS WC	4
MOTOR ROOM	103
TOTAL	351

ACCOMMODATIONS			
COMPARTMENT	OFFICERS	CPO	CREW
TORPEDO ROOM			12
OFFICERS & CPO QUARTERS	9	11	
CREW'S QUARTERS			46
STERN ROOM			9
NAVIGATION SYSTEM COMPT			1
TOTAL	9	11	68

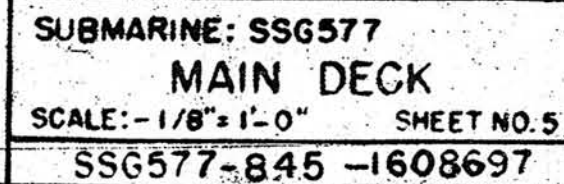








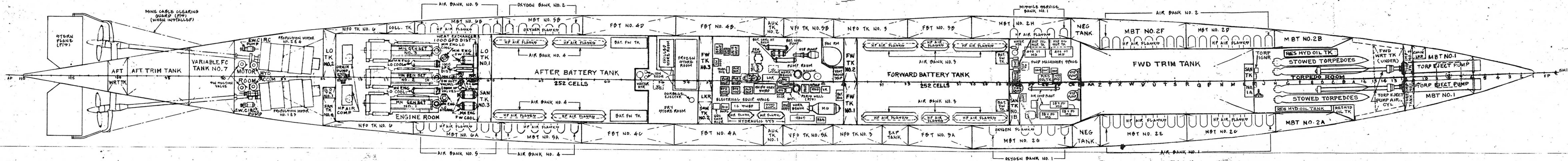








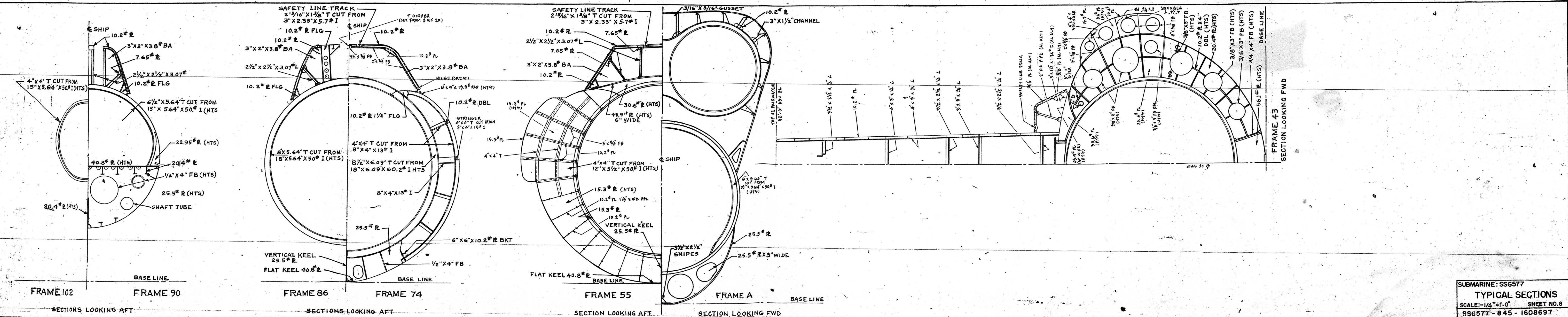




SUBMARINE: -SSG577  
HOLD

SCALE: -1/8"=1'-0" SHEET NO. 7  
SSG577-845 -1608697





SUBMARINE: SSG577  
TYPICAL SECTIONS  
SCALE: -1/4" = 1'-0" SHEET NO  
SSG577 - 845 - 1608697