

MONO COUNTY, CALIFORNIA

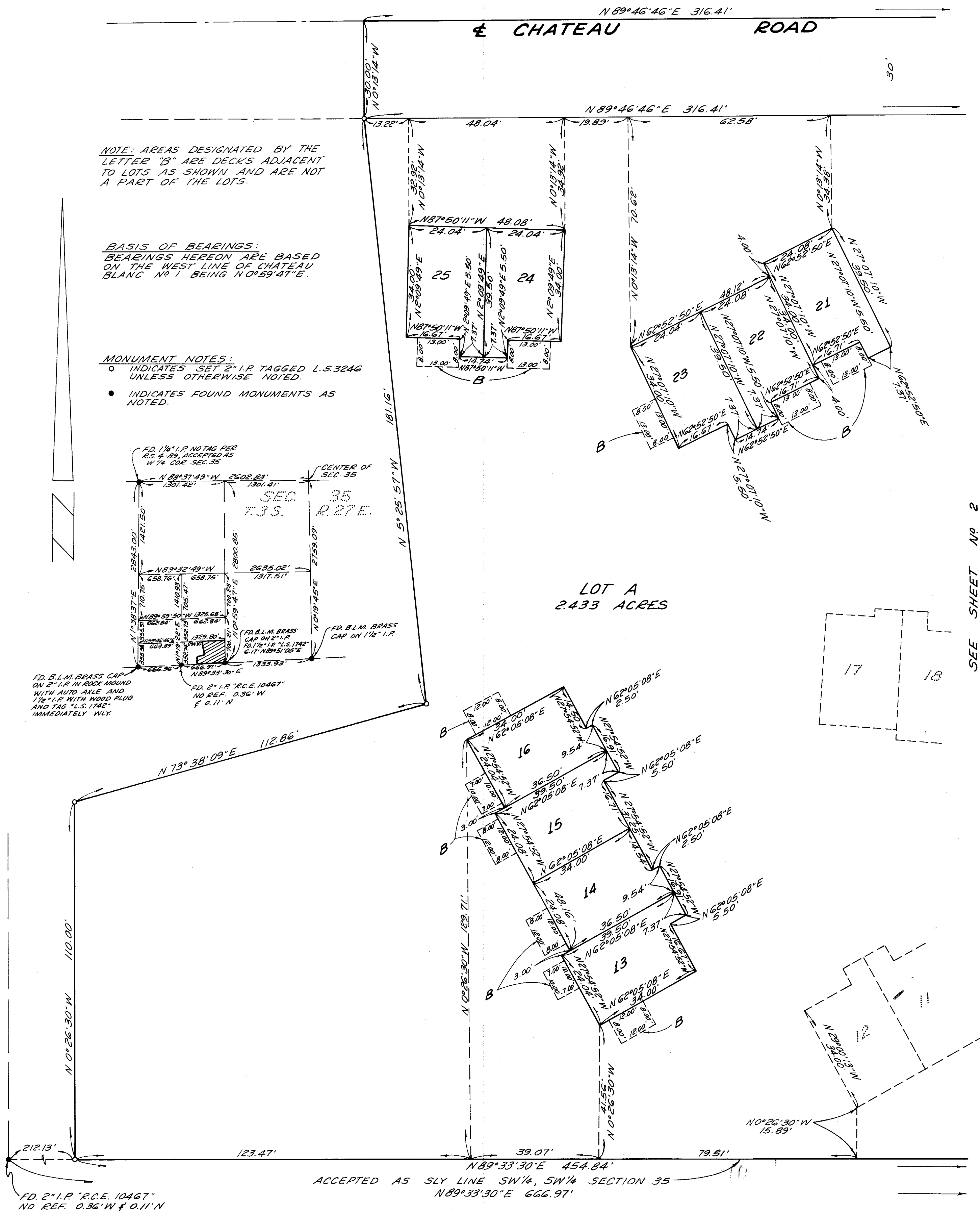
BEING A SUBDIVISION OF A PORTION OF THE SOUTHEAST QUARTER
OF THE SOUTHWEST QUARTER OF THE SOUTHWEST QUARTER OF
SECTION 35, TOWNSHIP 3 SOUTH, RANGE 27 EAST OF THE MOUNT
DIABLO MERIDIAN, COUNTY OF MONO, CALIFORNIA.

JULY, 1970

25 LOTS & LOT A

GERALD F. OLDENBURG, L.S. 3246

3.179 ACRES



SEE SHEET No 2

Vol. 7-19.17B