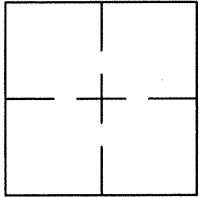


CORNER RECORDDocument Number CR 8182City of OAKLANDCounty of ALAMEDA, CaliforniaBrief Legal Description WELL MONUMENT LOCATED WITHIN THE INTERSECTION OF CASTRO STREET AND PRESERVATION PARK.**CORNER RECORD**

Government Corner ☐ Control ☒
 Meander ☐ Property ☐
 Rancho ☐ Other ☐
 Date of Survey 1/21/16

COORDINATES
(Optional)

N. _____
 E. _____
 Zone _____ Datum _____
 Elev. _____

Corner — Left as found ☒ Found and tagged ☐ Established ☐ Reestablished ☐ Rebuilt ☐

Identification and type of corner found: Evidence used to identify or procedure used to establish or reestablish the corner:
FOUND ALUMINUM DISK WITH PUNCH IN WELL MONUMENT.

AS SHOWN ON CITY OF OAKLAND MONUMENT MAP, PAGE 220.

CITY MONUMENT DESIGNATION NUMBER AT SUBJECT LOCATION 85E101.

THIS POINT WAS FOUND IN GOOD CONDITION AFTER A CONSTRUCTION PROJECT I
IN THE VICINITY.

A description of the physical condition of the monument as found and as set or reset: _____
FOUND AND SET POINTS AS SHOWN ON PAGE 2.

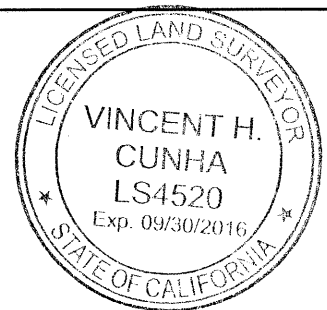
THESE TIES ARE FOR THE PURPOSE OF PERPETUATING THE FOUND MONUMENTATION.

NO CLAIM IS MADE AS TO THE RELATIONSHIP OF THE POINTS OR LINES SHOWN HEREON
TO TRUE BOUNDARY LOCATIONS.

SURVEYOR'S STATEMENT

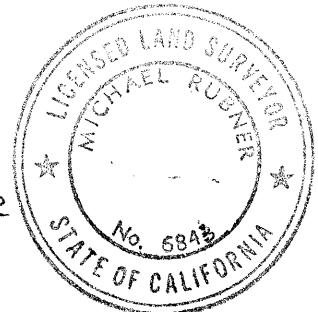
This Corner Record was prepared by me or under my direction in conformance with
 the Land Surveyors' Act on FEBRUARY 12, 2016.

Signed VINCENT H. CUNHA L.S. Number LS 4520

**COUNTY SURVEYOR'S STATEMENT**

This Corner Record was received 7 MARCH 2016 and examined
 and filed 31 MARCH 2016.

Signed Michael Rubner Title COUNTY SURVEYOR



County Surveyor's Comment _____

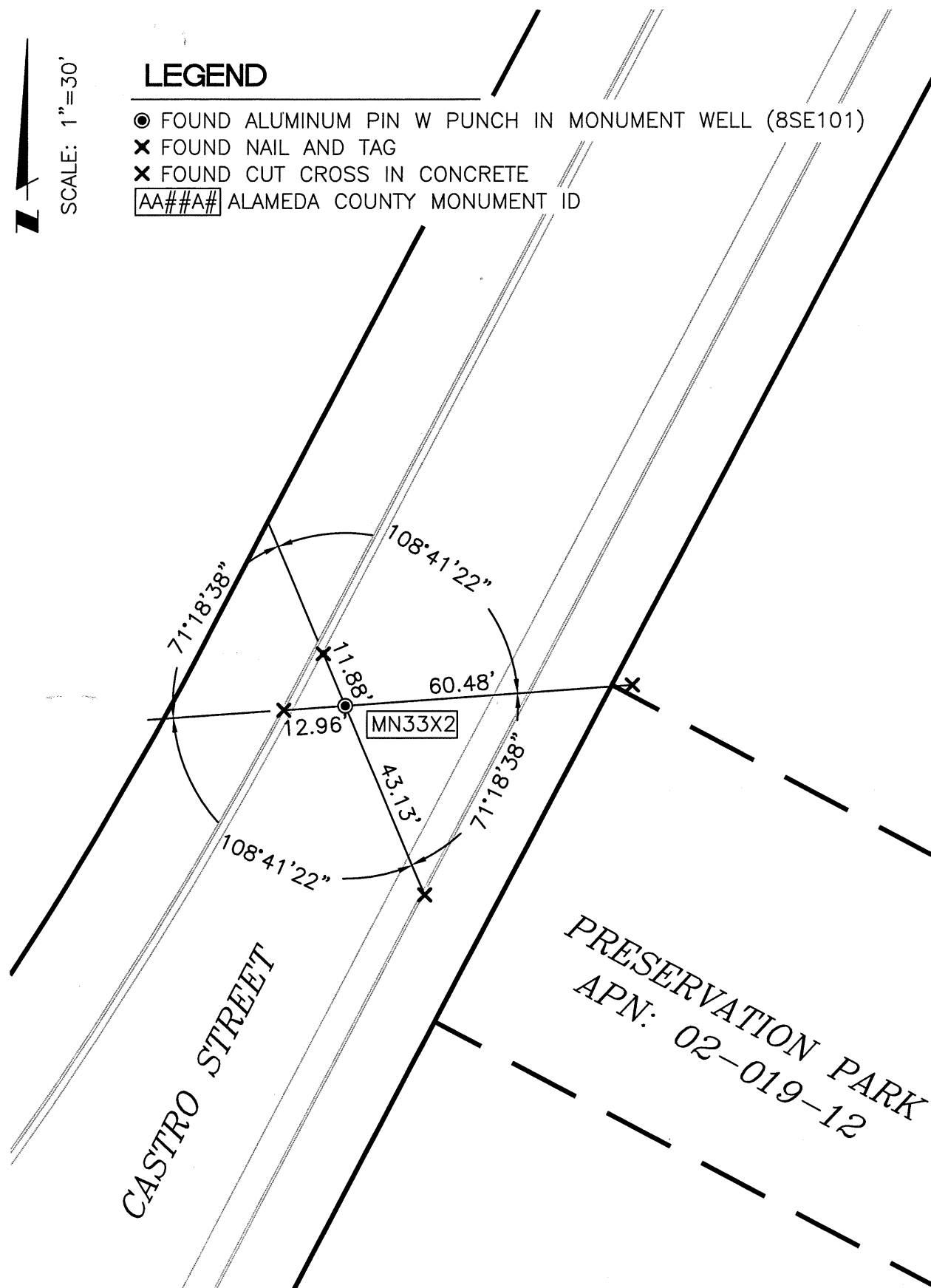
SEE CR 6930



SCALE: 1"=30'

LEGEND

- FOUND ALUMINUM PIN W PUNCH IN MONUMENT WELL (8SE101)
- ✕ FOUND NAIL AND TAG
- ✕ FOUND CUT CROSS IN CONCRETE
- AA###A# ALAMEDA COUNTY MONUMENT ID



PRESERVATION PARK
APN: 02-019-12

214127-Castro-CR3