

airdave's Kool Wheelz COLLECTION

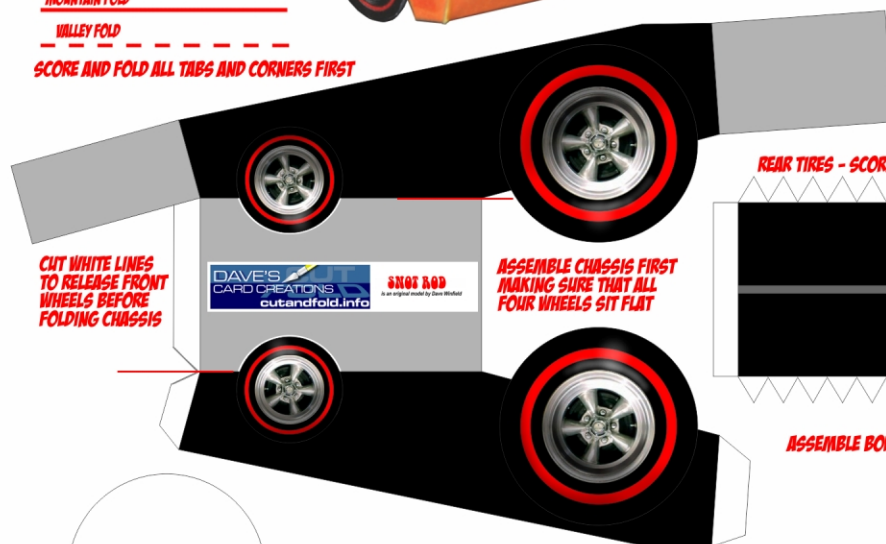
find more at cutandfold.info!



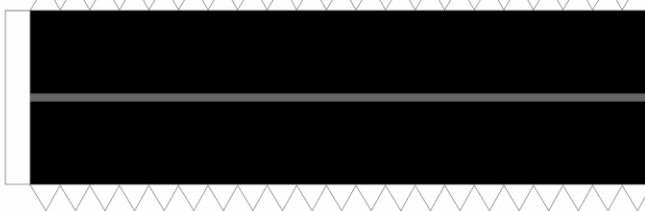
PHOTO OF ACTUAL ASSEMBLED MODEL

MOUNTAIN FOLD
VALLEY FOLD
SCORE AND FOLD ALL TABS AND CORNERS FIRST

NOT FOR SALE OR RESALE.
DO NOT COPY- DO NOT REDISTRIBUTE.
DO NOT SHARE WITHOUT PERMISSION.
THIS MODEL IS TO BE CONSIDERED "FAN-ART"
AND IS PURELY FOR PRIVATE USE AND
ENTERTAINMENT PURPOSES.

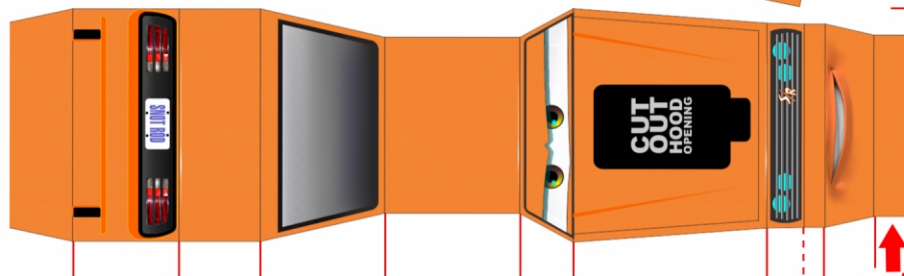


REAR TIRES - SCORE TABS, ROLL AND GLUE, FOLD TABS AND MOUNT IN REAR CHASSIS



ASSEMBLE BODY AND LOCATE OVER CHASSIS ASSEMBLY - GLUE FRONT TAB A TO SECURE

FORM FOR REAR TIRE ASSEMBLY
GLUE TO THICKER CARD AND POSITION IN THE CENTER OF THE REAR WHEEL
ASSEMBLY BEFORE FITTING THE WHEELS INTO THE CHASSIS



CUT OUT "ZOOMIES" CAREFULLY AND GLUE AT BOTTOM OF DOORS

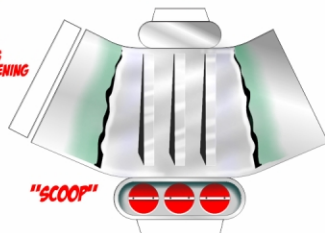
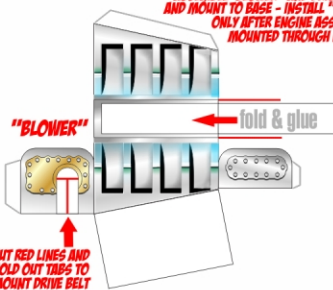
FIT BODY OVER THE CHASSIS AND SECURE BY JOINING THE UNDERSIDE TABS

"BLOWER" DRIVE BELT

glue blower assembly here

TAB A

ASSEMBLE "BLOWER" AND DRIVE BELT AND MOUNT TO BASE - INSTALL "SCOOP" ONLY AFTER ENGINE ASSEMBLY IS MOUNTED THROUGH HOOD OPENING



DAVE'S
CARD CREATIONS
cutandfold.info

SNOT ROD
is an original model by Dave Winfield