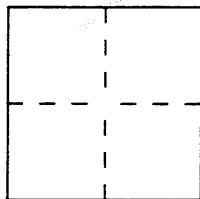


CORNER RECORD

Document Number CR 786City of SAN LEANDROCounty of ALAMEDA, CaliforniaBrief Legal Description PCL A, PM 1823

CORNER TYPE

Government Corner ☐ Control ☐
 Meander ☐ Property ☒
 Rancho ☐ Other ☐
 Date of Survey MAY, 1996

COORDINATES
(Optional)

N. _____
 E. _____
 Zone _____ Datum _____
 Elev. _____

Corner — Left as found ☐ Found and tagged ☐ Established ☐ Reestablished ☒ Rebuilt ☐

Identification and type of corner found: Evidence used to identify or procedure used to establish or reestablish the corner:

SURVEYED FROM FOUND MONUMENT SHOWN ON PM 1823. HED LOWELLING
BLVD. AS BASIS OF BEARING AS WAS DONE ON ORIGINAL MAP.

A description of the physical condition of the monument as found and as set or reset:

3/4" PIPE W/ PLASTIC TAG RCE 21,001 ON SOUTHERLY BOUNDARY OF PCL A.

SURVEYOR'S STATEMENT

This Corner Record was prepared by me or under my direction in conformance with the Land Surveyors' Act on July 1 1996.

Signed [Signature] L.S. or R.C.E. Number RCE 21,001

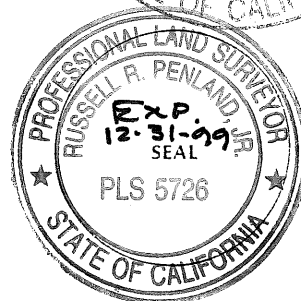
COUNTY SURVEYOR'S STATEMENT

This Corner Record was received 7-8 1996 and examined

and filed 2-14 1997 DEPUTY
 Signed Russell Reed Title COUNTY SURVEYOR

County Surveyor's Comment _____

285

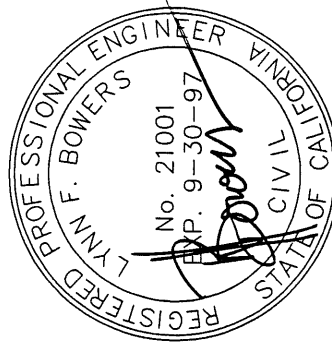
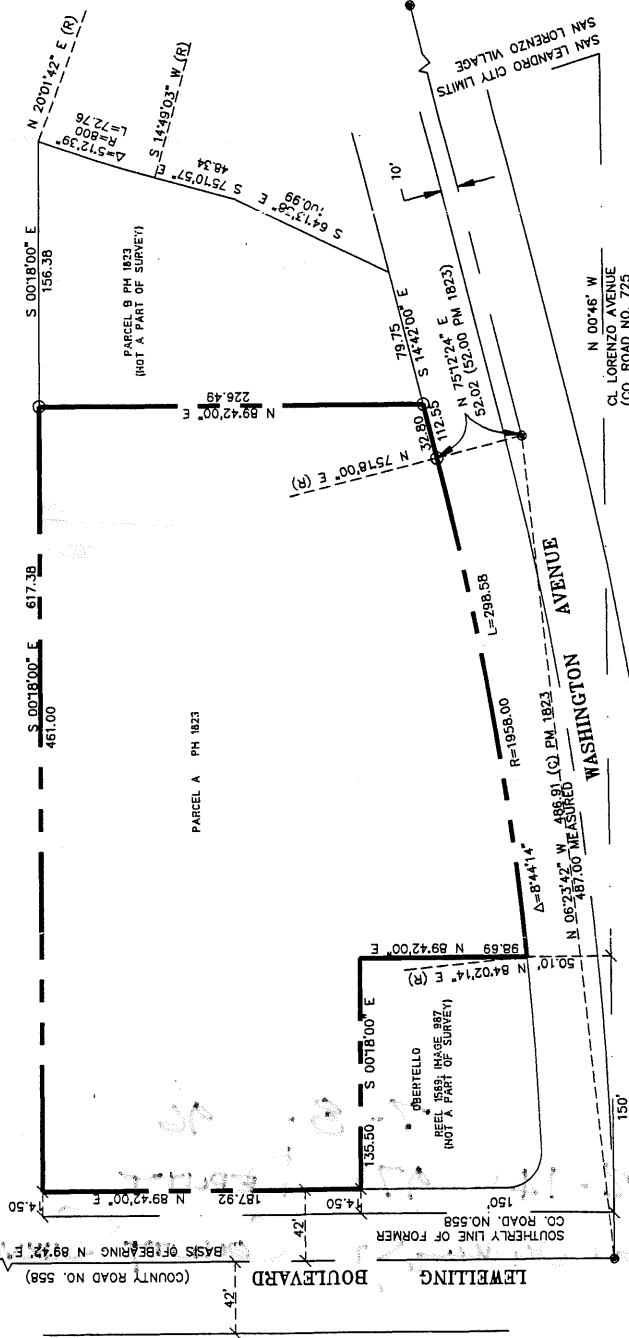


CORNER RECORD MAP
SAN LEANDRO, CALIFORNIA
MAY 1996



JAGODA PROPERTIES
(REEL 3956, IMAGE 387)

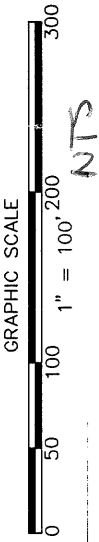
ERIL J. & IRMA HAJERSIK
(REEL 3005, IMAGE 237)



LEGEND

- BOUNDARY PARCEL A PM 1823
- PROPERTY OR R/W LINE
- MONUMENT LINE
- COUNTY ROAD
- MONUMENT
- SET 3/4" PIPE W/ RCE 21001

BASIS OF BEARING:
MONUMENT LINE OF LEWELLING BOULEVARD (FORMERLY COUNTY ROAD NO. 558) TAKEN AS
N 89°42' E PER PARCEL MAP 602 (BK. 64, PG. 43).



PREPARED BY: LYNN BOWERS & ASSOCIATES, INC.
civil & traffic engineering • land planning
4466 BLACK AVE., SU. G, PLEASANTON, CA 94566
Phone (510) 417-2144 • Fax (510) 1-5352

786