

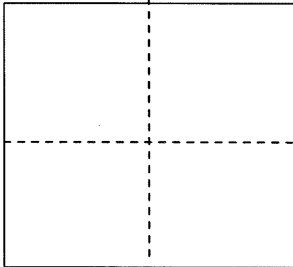
CORNER RECORD

CR BK 27 Pg. 77
Document Number CR 3119

City of Berkeley

County of Alameda, California

Brief Legal Description Monument B0763



CORNER TYPE

Government Corner ☐ Control ☐

Meander ☐ Property ☐

Rancho ☐ Other ☒

Date of Survey 08/31/07

COORDINATES (Optional)

N. _____

E. _____

Zone _____ NAD27 ☐ NAD83 ☐

NAD83 Epoch _____

Elev. _____

Vert. Datum: NGVD29 ☐ NAVD88 ☐

Meas. Units: Metric ☐ Imperial ☐

Corner - Left as found ☒ Found and tagged ☐ Established ☐ Reestablished ☐ Rebuilt ☐

Identification and type of corner found: Evidence used to identify or procedure used to establish or reestablish the corner:

See Sketch on attached drawing

A description of the physical condition of the monument as found and as set or reset: _____

See Sketch on attached drawing

SURVEYOR'S STATEMENT

This Corner Record was prepared by me or under my direction in conformance with

The Land Surveyor's Act on 9-27-07

Signed [Signature] P.L.S. or R.C.E. No. 7047

COUNTY SURVEYOR'S STATEMENT

This Corner Record was received 10-5-07

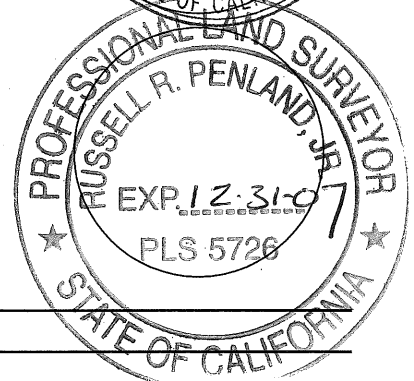
And examined and filed 10-17-07

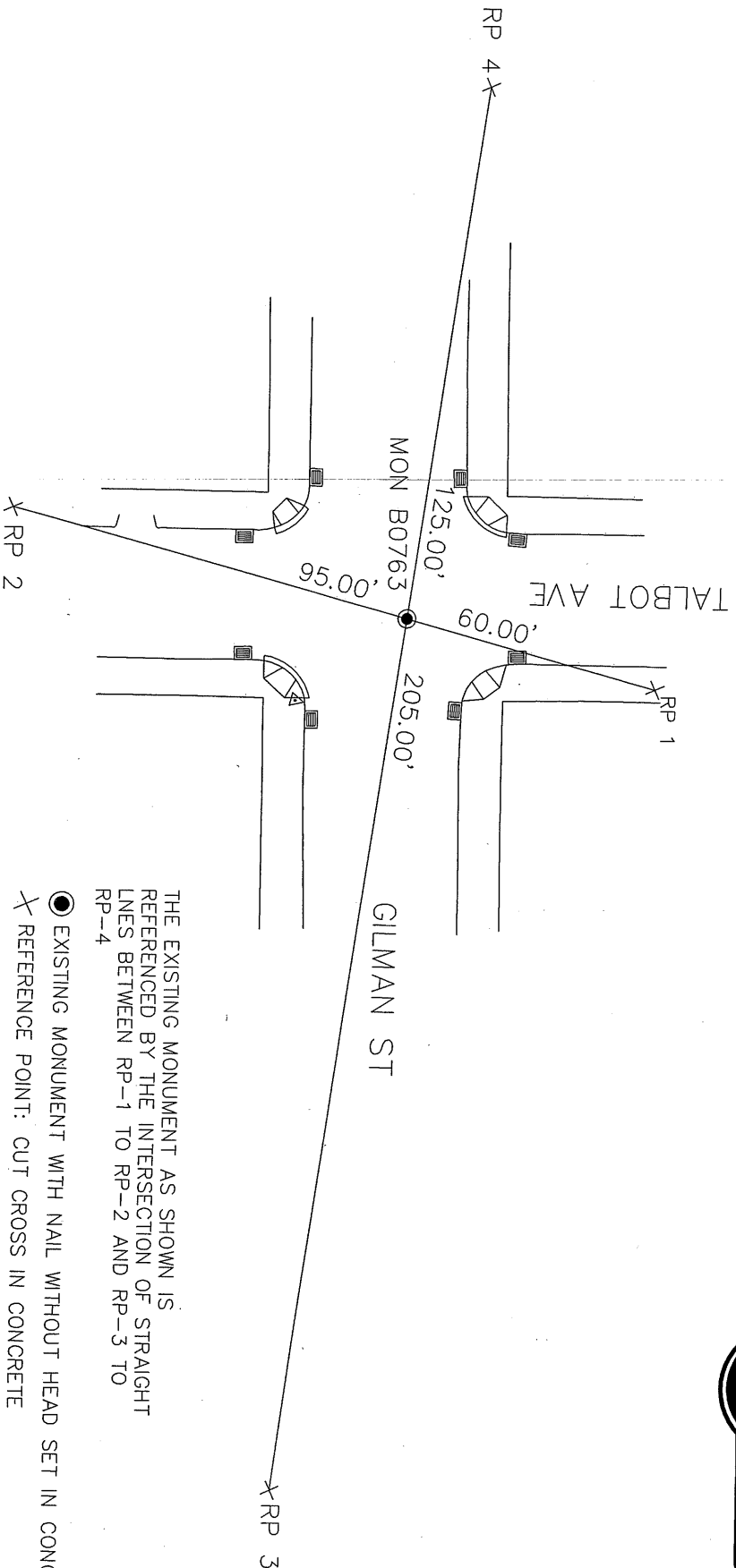
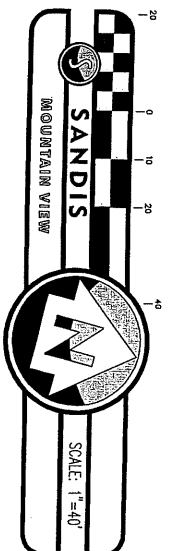
Signed [Signature] P.L.S. or R.C.E. No. 5726

Title COUNTY SURVEYOR

County Surveyor's Comment SEE ALSO CR 2622

AT THIS SAME LOCATION.





THE EXISTING MONUMENT AS SHOWN IS REFERENCED BY THE INTERSECTION OF STRAIGHT LINES BETWEEN RP-1 TO RP-2 AND RP-3 TO RP-4

● EXISTING MONUMENT WITH NAIL WITHOUT HEAD SET IN CONC

X REFERENCE POINT: CUT CROSS IN CONCRETE



SANDIS

CIVIL ENGINEERS
SURVEYORS
PLANNERS

605 Castro Street | Mountain View, CA 94041 | P. 650.969.6800 | F. 650.969.6472 | www.sandis.net
MOUNTAIN VIEW ROSEVILLE OAKLAND

DATE: 09/13/07
SCALE: 1"=40'
DRAWN BY: JPS
APPROVED BY: DWB
DRAWING NO.: 207164

**GILLMAN ST
& TALBOT AVE
CORNER RECORD**

SHEET
1
OF 1 SHEETS