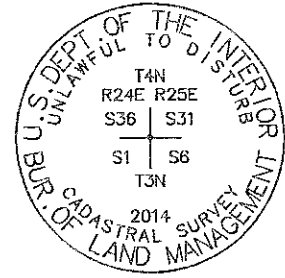


# RECORD OF SURVEY No. 32-101

IN THE UNINCORPORATED TERRITORY OF THE COUNTY OF MONO, STATE OF CALIFORNIA,  
BEING PORTIONS OF THE TOWNSHIP LINE COMMON TO TOWNSHIPS 3 AND 4 NORTH, RANGES 24 AND 25 EAST,  
MOUNT DIABLO MERIDIAN

## MONUMENT DESCRIPTIONS:

100100



FOUND A 3 1/2 INCH DIAMETER BRASS CAP ON A 2 3/8 INCH DIAMETER STEEL POST STAMPED "US DEPARTMENT OF THE INTERIOR, BUR OF LAND MANAGEMENT T4N R24E R25E S36 S31 S1 S6 T3N 2014", SET FLUSH IN A MOUND OF STONE, 48 INCH AT BASE, 14 INCH HIGH, WITNESS POST 5 FEET WESTERLY.

ACCESSORIES TO THE MONUMENT ARE:

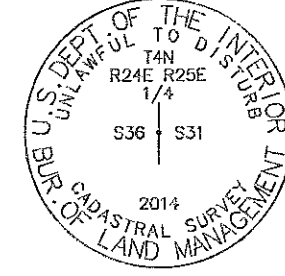
AN "XBO" CHISELED INTO THE EAST FACE OF A ROCK OUTCROP, MEASURING 20 FEET X 30 FEET X 15 FEET HIGH, BEARS N89°E, 13.2 FEET.

AN "XBO" CHISELED INTO THE TOP OF A BOULDER MEASURING 10 FEET X 10 FEET X 10 FEET HIGH, BEARS S02°E, 45.7 FEET.

AN "XBO" CHISELED INTO THE FACE OF A BOULDER MEASURING 4 FEET X 3 FEET X 1 FOOT HIGH, BEARS S64°W, 14.1 FEET.

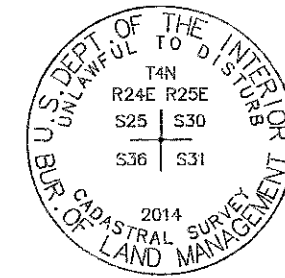
AN "XBO" CHISELED INTO A ROCK OUTCROP MEASURING 20 FEET X 30 FEET X 15 FEET HIGH, BEARS N06°W, 5.6 FEET.

100140



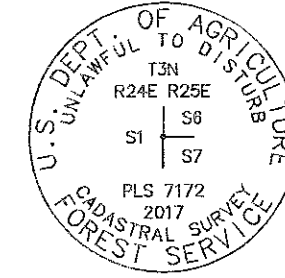
FOUND A 3 1/2 INCH DIAMETER BRASS CAP ON A 2 3/8 INCH DIAMETER STEEL POST STAMPED "US DEPARTMENT OF THE INTERIOR, BUR OF LAND MANAGEMENT T4N 1/4 R24E R25E S36 S31 T3N 2014", UP 4 INCHES IN A MOUND OF STONE, 36 INCH AT BASE, 10 INCHES HIGH, WITNESS POST 3.7 FEET SOUTHWESTERLY.

100200



FOUND A 3 1/2 INCH DIAMETER BRASS CAP ON A 2 3/8 INCH DIAMETER STEEL POST STAMPED, "US DEPARTMENT OF THE INTERIOR, BUR OF LAND MANAGEMENT T4N R24E R25E S35 S30 S36 S31 2014", SET FLUSH IN A MOUND OF STONE, 42 INCH AT BASE, 12 INCHES HIGH, WITNESS POST 2.9 FEET EASTERLY.

100600



FOUND THE ORIGINAL HANSON STONE IN A MOUND OF STONE AS PER R1, PAGE 3, SET A 3 1/2 INCH DIAMETER BRASS CAP STAMPED, "US DEPT OF AGRICULTURE FOREST SERVICE T3N R24E R25E S1 S6 S7 PLS 7172 2017", CONCRETED ON TOP OF A 16 INCH X 6 INCH X 14 INCH OUT OF THE GROUND STONE, SET IN A MOUND OF STONE, 42 INCH AT BASE, 8 INCHES HIGH, WITNESS POST 2.4 FEET SOUTHWESTERLY.

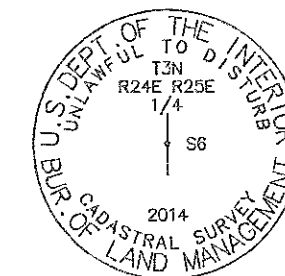
ACCESSORIES TO THE MONUMENT ARE:

A DRILL HOLE, 1/2 INCH IN DIAMETER, 1/2 INCH DEEP, IN A LARGE ROCK MEASURING 3.5 FEET X 3.5 FEET X 6 FEET HIGH, BEARS N53°44'38"E, 35.12 FEET.

A DRILL HOLE, 1/2 INCH IN DIAMETER, 1/2 INCH DEEP, IN A LARGE ROCK MEASURING 3 FEET X 2.5 FEET X 1.5 FEET HIGH, BEARS S25°53'55"E, 41.53 FEET.

A DRILL HOLE, 1/2 INCH IN DIAMETER, 1/2 INCH DEEP, IN A LARGE ROCK MEASURING 7 FEET X 15 FEET X 8 FEET HIGH, BEARS S54°58'37"W, 36.65 FEET.

100640



FOUND A 3 1/2 INCH DIAMETER BRASS CAP ON A 2 3/8 INCH DIAMETER STEEL POST STAMPED, "US DEPARTMENT OF THE INTERIOR, BUR OF LAND MANAGEMENT T3N R24E R25E 1/4 S6 2014", UP 4 INCHES IN A MOUND OF STONE, 42 INCH AT BASE, 10 INCHES HIGH, WITNESS POST 1.7 FEET WESTERLY.

## MONUMENT DESCRIPTIONS:

140100



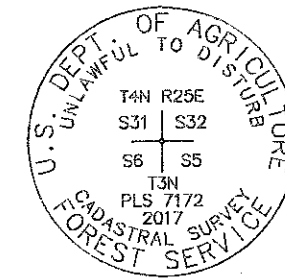
FOUND A 3 1/2 INCH DIAMETER BRASS CAP ON A 2 3/8 INCH DIAMETER STEEL POST STAMPED, "US DEPARTMENT OF THE INTERIOR, BUR OF LAND MANAGEMENT T4N R25E 1/4 S31 S6 T3N 2014", UP 4 INCHES IN A MOUND OF STONE, 42 INCH AT BASE, 18 INCHES HIGH, WITNESS POST 2 FEET NORTHWESTERLY.

ACCESSORIES TO THE MONUMENT ARE:

A 14 INCH DIAMETER PINON PINE SCRIBED "1/4 S6 BT", WITH A MAG SPIKE AND "US FOREST SERVICE" WASHER FOR CHAINING POINT AT CENTER RIGHT SIDE, AND A FOREST SERVICE 54-3 BEARING TREE SIGN, BEARS S02°W, 9.5 FEET.

AN "XBO" CHISELED INTO A LARGE ROCK, SOLID IN THE GROUND, MEASURING 2.5 FEET X 2 FEET X 1.5 FEET HIGH, BEARS N72°W, 7.4 FEET.

200100



FOUND THE ORIGINAL VON SCHMIDT SCATTERED AND EMBEDDED MOUND OF STONE AS PER R1, PAGE 2, SET A 3 1/2 INCH DIAMETER ALUMINUM CAP STAMPED, "US DEPT OF AGRICULTURE FOREST SERVICE T4N R25E S31 S32 S6 S5 PLS 7172 2017", UP 5 INCHES IN A MOUND OF STONE, 24 INCH AT BASE, 8 INCHES HIGH, WITNESS POST 1.1' EASTERLY.

ACCESSORIES TO THE MONUMENT ARE:

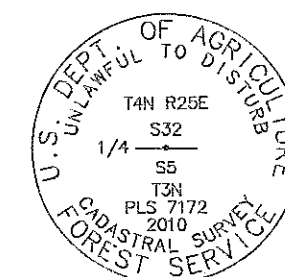
A REBAR, 1/2 INCH IN DIAMETER, 18 INCHES LONG, SET 10 INCHES BELOW THE GROUND, BEARS N45°19'45"E, 13.2 FEET.

AN "XBO" CHISELED INTO A BOULDER MEASURING 2 FEET X 3 FEET X 1 FOOT HIGH, BEARS S32°47'25"E, 26.8 FEET.

A REBAR, 1/2 INCH IN DIAMETER, 18 INCHES LONG, SET 10 INCHES BELOW THE GROUND, BEARS S46°24'58"E, 14.03 FEET.

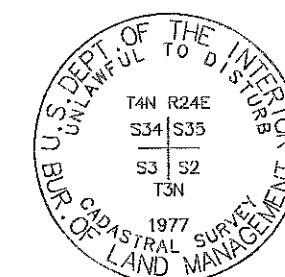
A REBAR, 1/2 INCH IN DIAMETER, 18 INCHES LONG, SET 10 INCHES BELOW THE GROUND, BEARS N53°35'32"W, 15.28 FEET.

240100



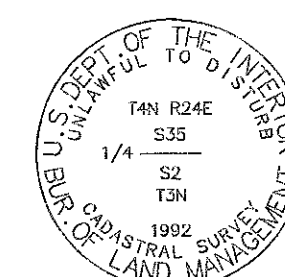
FOUND A 3 1/2 INCH DIAMETER ALUMINUM CAP STAMPED, "US DEPT OF AGRICULTURE FOREST SERVICE T4N R25E 1/4 S32 S5 PLS 7172 2010", SET FLUSH IN A MOUND OF STONE, 42 INCH AT BASE, 10 INCHES HIGH, PER R2, WITNESS POST 2.0' SOUTHERLY.

500700



FOUND A 3 1/2 INCH DIAMETER BRASS CAP ON A 2 3/8 INCH DIAMETER STEEL POST STAMPED, "US DEPARTMENT OF THE INTERIOR, BUR OF LAND MANAGEMENT T4N R24E S34 S35 S3 S2 T3N 1977", UP 4 INCHES IN A MOUND OF STONE, 36 INCH AT BASE, 6 INCHES HIGH, PER R2. WITNESS POST 0.9' SOUTHEASTERLY.

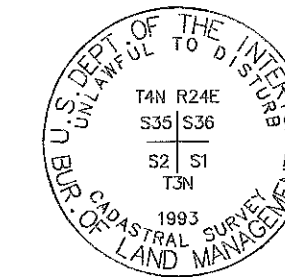
540700



FOUND A 3 1/2 INCH DIAMETER BRASS CAP ON A 2 3/8 INCH DIAMETER STEEL POST STAMPED "US DEPARTMENT OF THE INTERIOR, BUR OF LAND MANAGEMENT T4N R24E 1/4 S35 S2 T3N 1992", SET FLUSH IN A MOUND OF STONE, 36 INCH AT BASE, 10 INCHES HIGH, PER R2. WITNESS POST 1.8' WESTERLY.

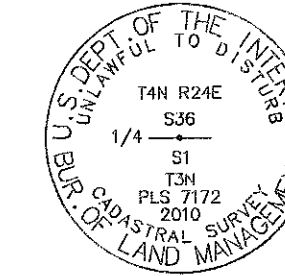
## MONUMENT DESCRIPTIONS:

600700



FOUND A 3 1/2 INCH DIAMETER BRASS CAP ON A 2 3/8 INCH DIAMETER STEEL POST STAMPED "US DEPARTMENT OF THE INTERIOR, BUR OF LAND MANAGEMENT T4N R24E S35 S36 S2 S1 T3N 1988", UP 2 INCHES IN A MOUND OF STONE, 48 INCH AT BASE, 12 INCHES HIGH, WITNESS POST 2.0 FEET NORTHEASTERLY.

640700



FOUND A 3 1/2 INCH DIAMETER BRASS CAP ON A 2 3/8 INCH DIAMETER STEEL POST STAMPED, "US DEPARTMENT OF THE INTERIOR, BUR OF LAND MANAGEMENT T4N R24E 1/4 S36 S1 T3N 2014", UP 2 INCHES IN A MOUND OF STONE, 24 INCH AT BASE, 8 INCHES HIGH, PER R2. WITNESS POST 1.1 FEET WESTERLY.