

CORNER RECORD

BK 71 PG 82

APN No. _____ (Optional) Document Number CR 7413
 City of OAKLAND County of ALAMEDA, California
 Brief Legal Description City of Oakland Street Monument

| | |
|--|--|
| | |
| | |

CORNER TYPE

Government Corner ☐ Control ☐
 Meander ☐ Property ☐
 Rancho ☐ Other ☒
 Date of Survey 2/26/2015

COORDINATES ** (Optional)

N. _____
 E. _____
 Zone NAD27 ☐ NAD83 ☐
 NAD 83 Epoch _____
 Elev. _____

Corner - Left as found ☒ Found and tagged ☐ Established ☐ Reestablished ☐ Rebuilt ☐

In compliance with Section 8771 of the Professional Land Surveyors' Act, this corner record is being filed to ESTABLISH X / REESTABLISH _____ the position of an existing monument PRIOR X / SUBSEQUENT _____ to street or highway reconstruction.

Identification and type of corner found: Evidence used to identify or procedure used to establish or reestablish the corner:
In compliance with Section 8771 of the Professional Land Surveyors' Act, this corner record is being filed to establish the position of an existing monument prior to street or highway construction.

A description of the physical condition of the monument as found and as set or reset: _____
See page 2 - Found concrete monument w/pin at the intersection of International Blvd. and 54th Ave. (Southerly)

SURVEYOR'S STATEMENT

This Corner Record was prepared by me or under my direction in conformance with the Land Surveyors' Act on May 19 20 15.

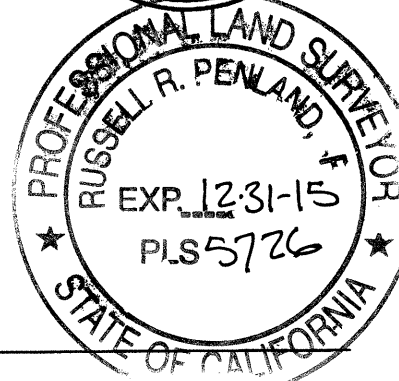
Signed Randell Scott West L.S. or R.C.E. Number 8663

COUNTY SURVEYOR'S STATEMENT

This Corner Record was received 6-25-2015 and examined and filed 9-4-2015.

Signed [Signature] Title County Surveyor

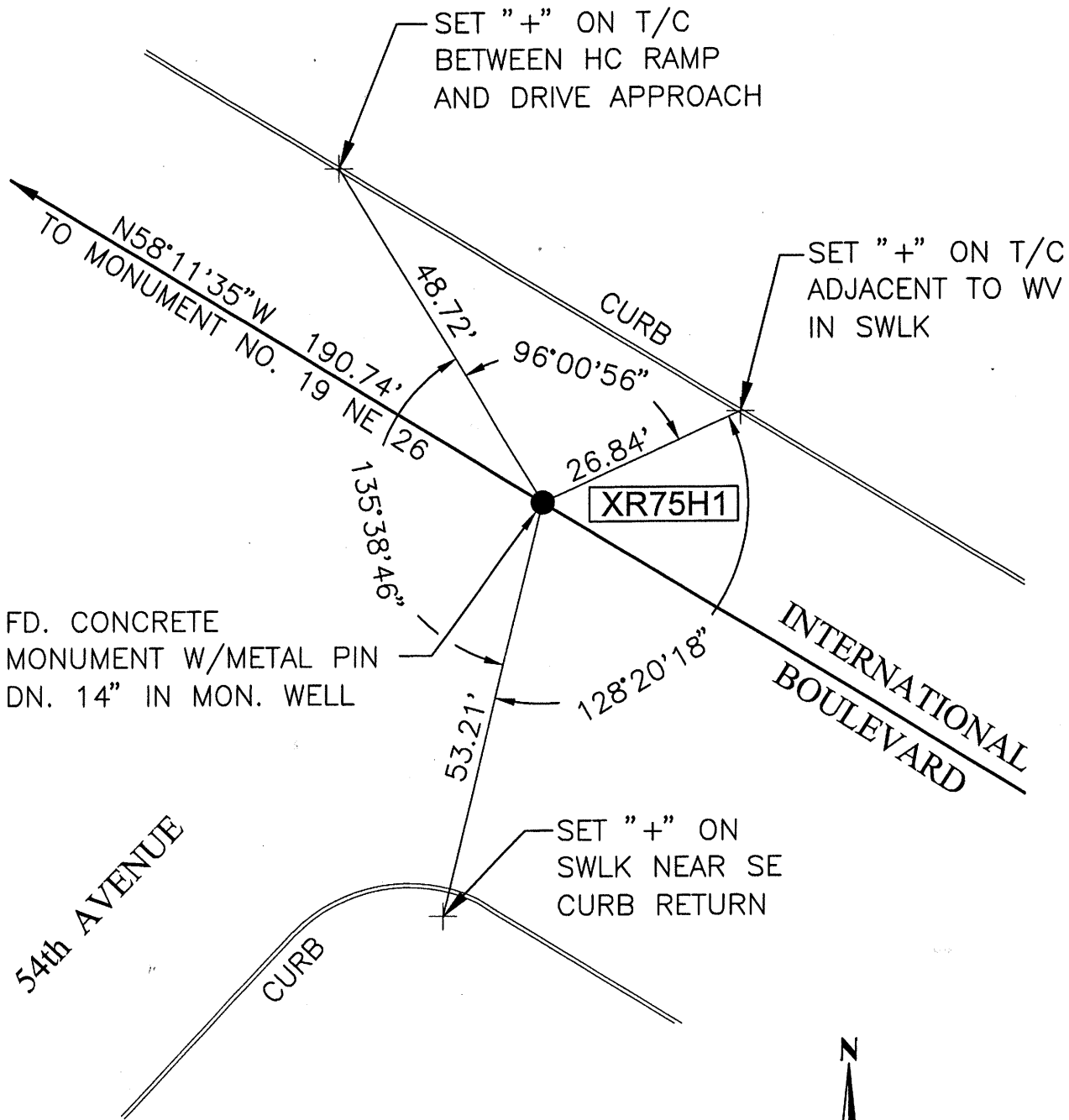
County Surveyor's Comment _____



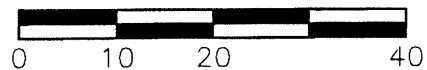
COORDINATES ** Coordinates are Navigational quality only, not for retracement.

Job Number: _____

Spec. No: _____



SCALE 1" = 20'



B. C. & F. Project No. 215-0133
McPheeters No. 115108