

BK 41 Pg 14

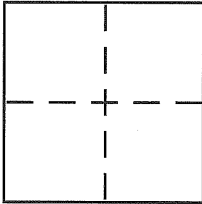
# CORNER RECORD

Document Number CR 4632

City of BERKELEY

County of ALAMEDA, California

Brief Legal Description CITY OF BERKELEY MONUMENT B0827



## CORNER TYPE

Government Corner ☐ Control ☒  
 Meander ☐ Property ☐  
 Rancho ☐ Other ☐  
 Date of Survey AUGUST 10, 2011

## COORDINATES (Optional)

N. \_\_\_\_\_  
 E. \_\_\_\_\_  
 Zone \_\_\_\_\_ NAD27 ☐ NAD83 ☐  
 NAD83 Epoch \_\_\_\_\_  
 Elev. \_\_\_\_\_  
 Vert. Datum: NGVD29 ☐ NAVD88 ☐  
 Meas. Units: Metric ☐ Imperial ☐

Corner – Left as found ☒ Found and tagged ☐ Established ☐ Reestablished ☐ Rebuilt ☐

Identification and type of corner found: Evidence used to identify or procedure used to establish or reestablish the corner:  
IN COMPLIANCE WITH SECTION 8771 OF THE PROFESSIONAL LAND SURVEYORS' ACT, THIS CORNER  
RECORD IS BEING FILED TO ESTABLISH THE POSITION OF AN EXISTING MONUMENT PRIOR TO STREET  
RECONSTRUCTION. (SEE PAGE 2)

A description of the physical condition of the monument as found and as set or reset:  
CITY OF BERKELEY STANDARD WELL-TYPE MONUMENT, FOUND IN GOOD CONDITION. (SEE PAGE 2)

## SURVEYOR'S STATEMENT

This Corner Record was prepared by me or under my direction in conformance with  
 the Land Surveyor's Act on AUGUST 12, 2011

Signed [Signature] P.L.S or R.C.E. No. 5003

## COUNTY SURVEYOR'S STATEMENT

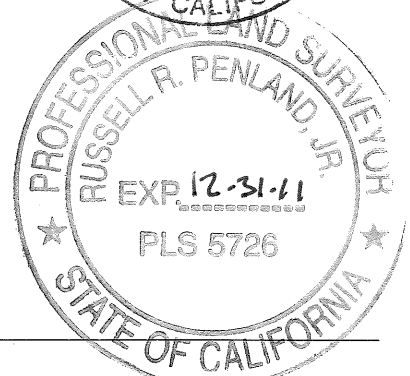
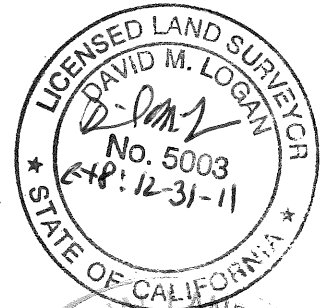
This Corner Record was received 8-26-11

and examined and filed 9-15-11

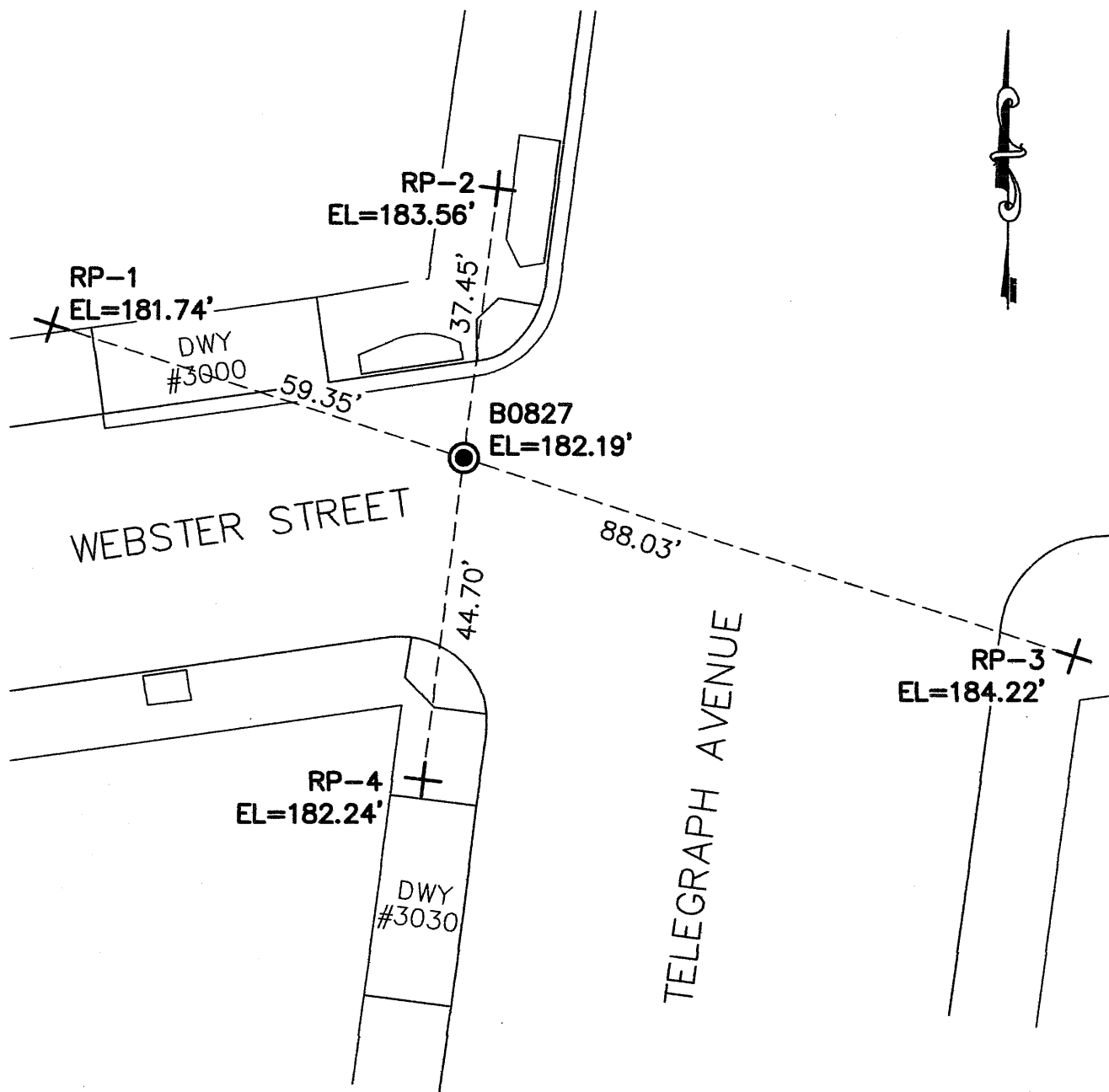
Signed [Signature] P.L.S or R.C.E. No. 5126

Title COUNTY SURVEYOR

County Surveyor's Comment \_\_\_\_\_



TAGIX3



NOTE:  
THE EXISTING MONUMENT AS SHOWN IS  
REFERENCED BY STRAIGHT LINES BETWEEN  
RP-1 TO RP-3 AND RP-2 TO RP-4.

#### LEGEND

● STANDARD CITY MONUMENT WITH 1/4"  
BRASS PIN

+ REFERENCE CROSS SET IN SIDEWALK