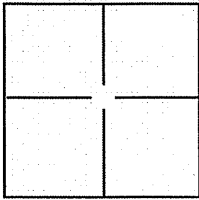


CORNER RECORD

BK 76 PG 85Document Number CR 7995City of CASTRO VALLEY AREACounty of ALAMEDA, CaliforniaBrief Legal Description ALAMEDA COUNTY MONUMENT NO. EF54E5. FOUND MONUMENT IN SUNNYBANK LANE JUST EAST OF MAYVILLE DRIVE.

CORNER TYPE

Government Corner	<input type="checkbox"/>	Control	<input type="checkbox"/>
Meander	<input type="checkbox"/>	Property	<input type="checkbox"/>
Rancho	<input type="checkbox"/>	Other	<input type="checkbox"/>

COORDINATES(Optional)

N. _____
E. _____
Zone _____ NAD27 ☐ NAD83 ☐
NAD83 Epoch ALAMEDA
Elev. _____
Vert. Datum: NGVD29 ☐ NADV88 ☐
Meas. Units: Metric ☐ Imperial ☒

Date of Survey DECEMBER 11, 2015.Corner - Left as found ☒ Found and tagged ☐ Established ☐ Reestablished ☐ Rebuilt ☐

Identification and type of corner found: Evidence used to identify or procedure used to establish or reestablish the corner:

FOUND MONUMENT NO. EF54E5. ESTABLISHED PRE-CONSTRUCTION SURVEY MONUMENT TIES AS SHOWN ON SHEET 2 OF 2.

A description of the physical condition of the monument as found and as set or reset:

I SET FOUR SCRIBED "X's" IN TOP OF CURBS FOR REFERENCE POINTS AS SHOWN ON SHEET 2 OF 2. TIE TO POINT "DE43D4" GIVEN IN CASE IT SURVIVES CONSTRUCTION. NOTE THAT BEARINGS ARE APPROXIMATE AND ARE TO BE USED FOR ANGLE CALCULATIONS ONLY.

SURVEYOR'S STATEMENT

This Corner Record was prepared by me or under my direction in conformance with the Land Surveyor's Act on DECEMBER 13, 2015.Signed James N. Landrum P.L.S. or R.C.E. No.: LS 5837

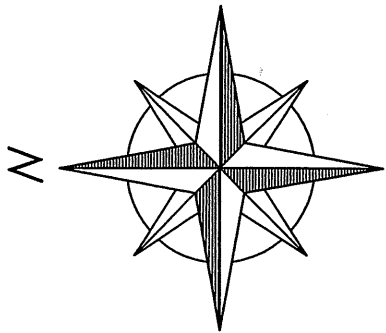
COUNTY SURVEYOR'S STATEMENT

This Corner Record was received 19 JANUARY 2016 and examined and filed 16 FEBRUARY 2016.Signed Michael Rubner P.L.S. or R.C.E. No.: 6843Title COUNTY SURVEYOR

County Surveyor's Comment _____

SPEC 2279R23432

POINT "EF54E5"



LEGEND

FOUND 6" CONCRETE CYLINDER
WITH PIN IN MONWELL, 6" DOWN.



SET SCRIBED "X" IN TOP OF CURB
UNLESS OTHERWISE NOTED.



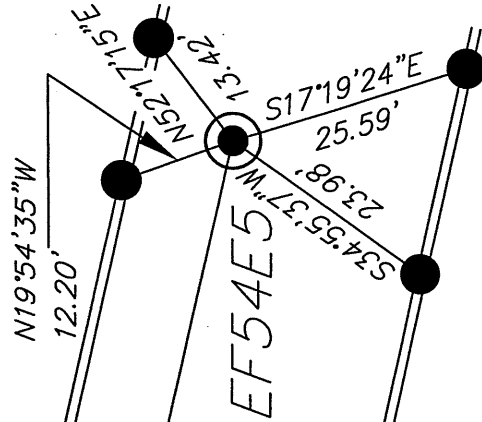
ALAMEDA COUNTY MONUMENT
NUMBER.

EF54E5

MAYVILLE
DRIVE

DE43D4

SUNNYBANK LANE



NOT TO SCALE