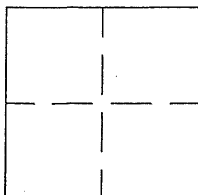


CORNER RECORD

BK 55 PG 95APN No. 902 - 002 - 004 - 00 (Optional)Document Number CR 3886Unincorporated LIVERMORECounty of ALAMEDA, CaliforniaBrief Legal Description N. LIVERMORE AVE.

CORNER TYPE

Government Corner ☐ Control ☐
Meander ☐ Property ☐
Rancho ☐ Other ☒
Date of Survey JULY 10, 2009

COORDINATES (Optional)

N. 456,677
E. 1,633,146
Zone ☐ NAD27 ☐ NAD83 ☐
NAD 83 Epoch ☐
Elev. ☐

Corner - Left as found ☐ Found and tagged ☐ Established ☐ Reestablished ☒ Rebuilt ☐

In compliance with Section 8771 of the Professional Land Surveyors' Act, this corner record is being filed to ESTABLISH ☐ / REESTABLISH ☒ the position of an existing monument PRIOR ☐ / SUBSEQUENT ☒ to street or highway reconstruction. (Use this portion only when applicable.)

Identification and type of corner found: Evidence used to identify or procedure used to establish or reestablish the corner:

CR 3739 WAS USED AS THE BASIS FOR RE-ESTABLISHING THE MONUMENT'S ORIGINAL LOCATION, AS FOLLOWS: REF. PTS 1 & 3 AND REF. PTS. 2 & 4 (DIAGONAL PAIRS) WERE FOUND UNDISTURBED.

A description of the physical condition of the monument as found and as set or reset: SET COUNTY DISK STAMPED ZX37B6 @ THE INTERSECTION OF THESE 2 DIAGONAL LINES. SEE PG. 2.

N. LIVERMORE AVE STA. 206+98.46

SURVEYOR'S STATEMENT

This Corner Record was prepared by me or under my direction in conformance with the Land Surveyors' Act on SEPT. 14, 20 09.

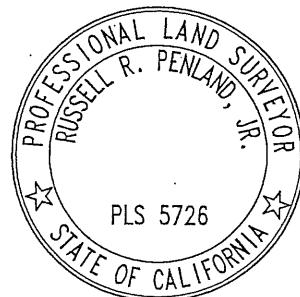
Signed Robert A. Machado (L.S.) or R.C.E. Number 7380



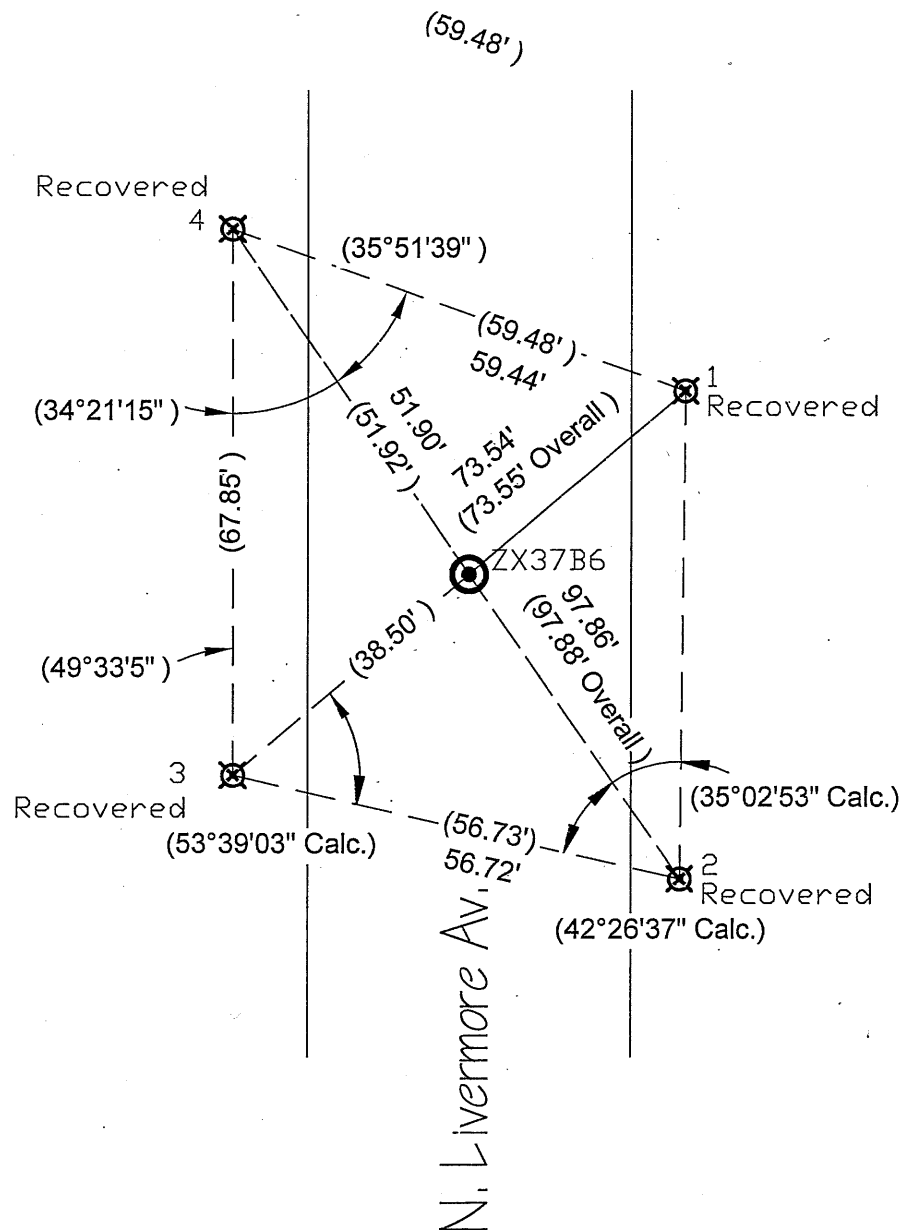
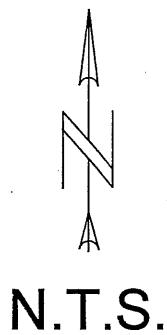
COUNTY SURVEYOR'S STATEMENT

This Corner Record was received SEPT. 14, 20 09 and examined and filed 11-15-20 13.

Signed [Signature] Title County Surveyor



County Surveyor's Comment



Legend

Found: $\frac{1}{2}$ " Rebar w/Plastic Cap



Set: Standard County Brass Disc



Measurements from CR 3739 shown as (###.##) typical.

Credits

Lead: Robert Machado

Assist.: Benjamin Arcibal

Computations: Terri Graumann

CAD: reid

File Name: CR3886_CR3739_Thursday_20090728 CR Page 2 with dxf.dwg

Job#: R23343

Reference(s)

CR3739

RS for Alignment of North Livermore Ave.

RS Bk 4 Pg 55-69 Sht. 13 of 15

Alameda County Monument Id System (PTa...) **ZX37B6**