

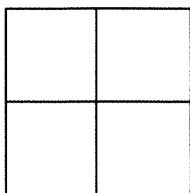
# CORNER RECORD

Agency Index BK 133 PG 11  
Document Number CR 13901

City of OAKLAND

County of ALAMEDA, California

Brief Legal Description WELL MONUMENT LOCATED WITHIN SEQUOYAH RD IN FRONT OF 4730 SEQUOYAH



## CORNER TYPE

Government Corner ☐ Control ☒  
Meander ☐ Property ☐  
Rancho ☐ Other ☐

Date of Survey 11/21/19

## COORDINATES (Optional)

N. \_\_\_\_\_ E. \_\_\_\_\_

Elevation \_\_\_\_\_

Units Metric ☐ U.S. Survey Foot ☐

Horizontal Datum \_\_\_\_\_

Zone \_\_\_\_\_ Epoch Date \_\_\_\_\_

Vertical Datum \_\_\_\_\_

☐ Complies with Public Resources Code §§8801-8819

☐ Complies with Public Resources Code §§8890-8902

PLS Act Ref: ☐ 8765 (d) ☒ 8771 ☐ 8773 ☐ Other: \_\_\_\_\_

Corner/  
Monument: ☒ Left as found ☐ Established ☐ Rebuilt ☒ Pre-Construction  
☐ Found and tagged ☐ Reestablished ☒ Referenced ☐ Post-Construction

Narrative of corner identified and monument as found, set, reset, replaced, or removed:

☐ See sheet #2 for description (s):

FOUND PIN IN CONCRETE IN MONUMENT WELL.

FOUND AND SET POINTS AS SHOWN ON PAGE 2.

THIS POINT WAS REFERENCED PRIOR TO A CONSTRUCTION PROJECT IN THE VICINITY.

THE TIES SHOWN HEREON ARE FOR THE PURPOSE OF PERPETUATING FOUND MONUMENTATION.

NO CLAIM IS MADE AS TO THE RELATIONSHIP OF THE POINTS OR LINES SHOWN HEREON TO TRUE BOUNDARY LOCATION.

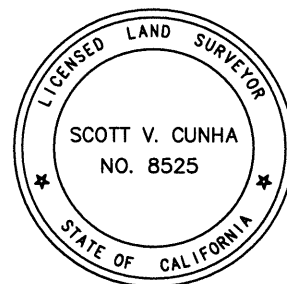
## SURVEYOR'S STATEMENT

This Corner Record was prepared by me or under my direction in conformance with

the Professional Land Surveyors' Act on DECEMBER 2, 2019.

Signed Scott V. Cunha P.L.S. or R.C.E. No. 8525

SCOTT V. CUNHA



## COUNTY SURVEYOR'S STATEMENT

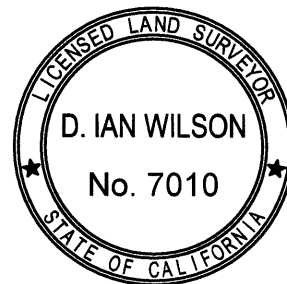
This Corner Record was received APR 09 2020

and examined and filed APR 13 2020

Signed D. Ian Wilson P.L.S. or R.C.E. No. 7010

Title COUNTY SURVEYOR

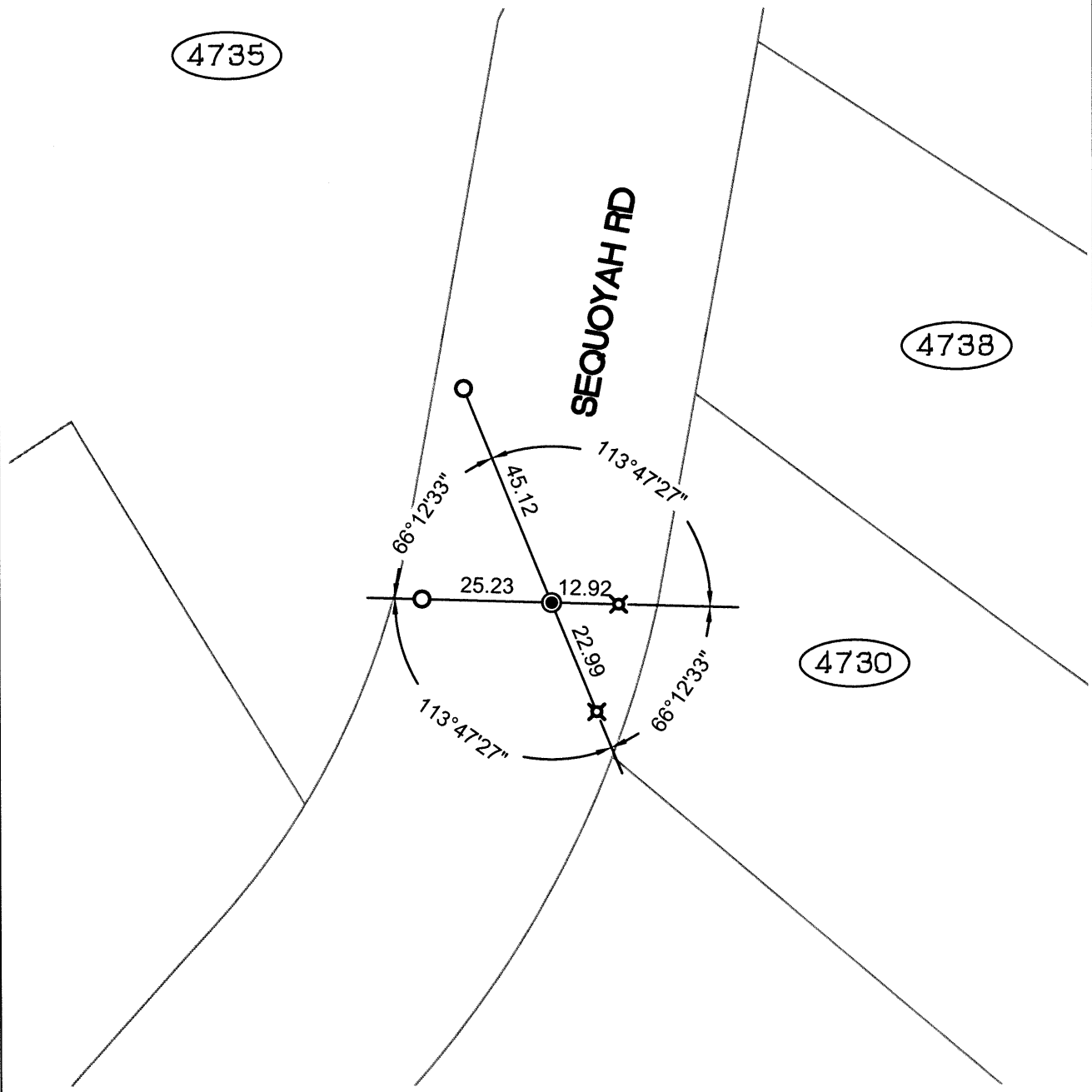
County Surveyor's Comment



SCALE: 1"=30'

## LEGEND

- FOUND PIN IN CONCRETE IN MONUMENT WELL
- ✕ SET MAG NAIL AND WASHER STAMPED "CUNHA RP LS 8525"
- SET REBAR & CAP STAMPED "CEI RP"
- AA##A# ALAMEDA COUNTY MONUMENT ID
- 19592 REFERENCE STREET ADDRESS



219082-Seq-Keller-CR-01