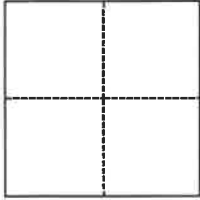


CORNER RECORD

Agency Index BK 140 PG 58Document Number CR 15379City of Oakland (APN 29-1069-40) County of Alameda, CaliforniaBrief Legal Description Monument in the Rettig Avenue, near 4120 Rettig Avenue**CORNER TYPE****COORDINATES (Optional)**

- ☐ Government Corner ☒ Control
☐ Meander ☐ Property
☐ Rancho ☐ Other

Date of Survey May 26, 2021

N. _____ E. _____

Elevation _____

Units ☐ Metric ☒ U.S. Survey Foot

Horizontal Datum _____

Zone _____ Epoch Date _____

Vertical Datum _____

☐ Complies with Public Resources Code §§8801-8819☐ Complies with Public Resources Code §§8890-8902PLS Act Ref.: ☐ 8765(d) ☒ 8771 ☐ 8773 ☐ Other:

Corner/
Monument: ☒ Left as found ☐ Established ☐ Rebuilt ☒ Pre-Construction
☐ Found and tagged ☐ Reestablished ☒ Referenced ☐ Post-Construction

Narrative of corner identified and monument as found, set, reset, replaced, or removed:

☒ See sheet #2 for description(s):

Found monument that could be damaged or destroyed by planned water line construction project. Monument was referenced as shown on page 2. The purpose of this Corner Record is to preserve possible evidence only; no attempt was made to determine the relationship to property, centerline, or right of way lines.

Reference EBMUD CR Book C, Page 2 (Kong/Chou)

SURVEYOR'S STATEMENT

This Corner Record was prepared by me or under my direction in conformance with

the Professional Land Surveyors' Act on August 24, 2021Signed [Signature] P.L.S. or R.C.E. No. 8889**COUNTY SURVEYOR'S STATEMENT**

This Corner Record was received _____

and examined and filed SEP 02 2021Signed D. Ian Wilson P.L.S. or R.C.E. No. 7010Title ALAMEDA COUNTY SURVEYOR**County Surveyor's Comment**

OAKLAND

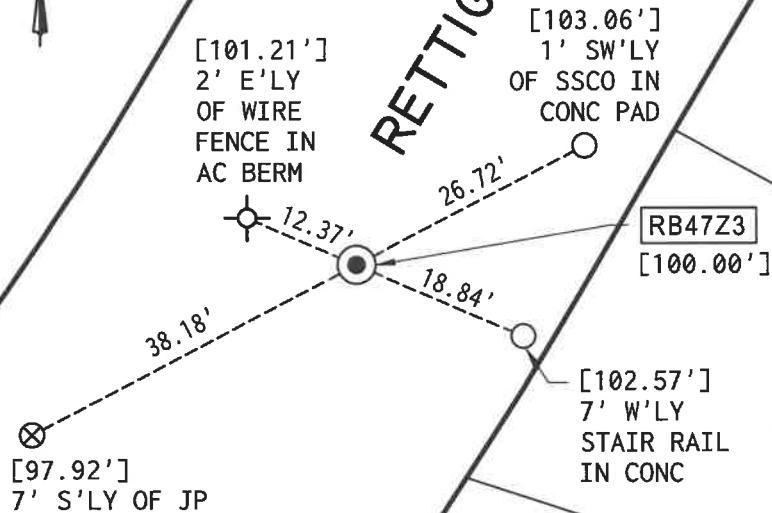
ALAMEDA COUNTY



SCALE
1"=20'

RETTIG AVENUE

PLAT OF
THE PART OF
THE RANCHO
SAN ANTONIO
FINALLY
CONFIRMED TO
ANTONIO MARIA
PERALTA, ETAL.
A M 669



4120 RETTIG AVENUE
APN 29-1069-40

LEGEND



FOUND 1/4" PIN IN CONCRETE IN STANDARD MONUMENT WELL, 1.1' BELOW GRADE



SET CONCRETE ANCHOR NAIL AND 1-1/2" ALUMINUM WASHER, STAMPED "EBMUD MON RP"



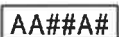
SET PK NAIL WITH ALUMINUM WASHER STAMPED "EBMUD MON RP"



SET 1/2" REBAR WITH 2" ALUMINUM CAP STAMPED "EBMUD MON RP" IN DIRT



ASSUMED ELEVATION (MEASURED USING A LEICA DIGITAL LEVEL)



ALAMEDA COUNTY MONUMENT I.D.

ADDRESS: 4120 RETTIG AVENUE

APN: 29-1069-40

