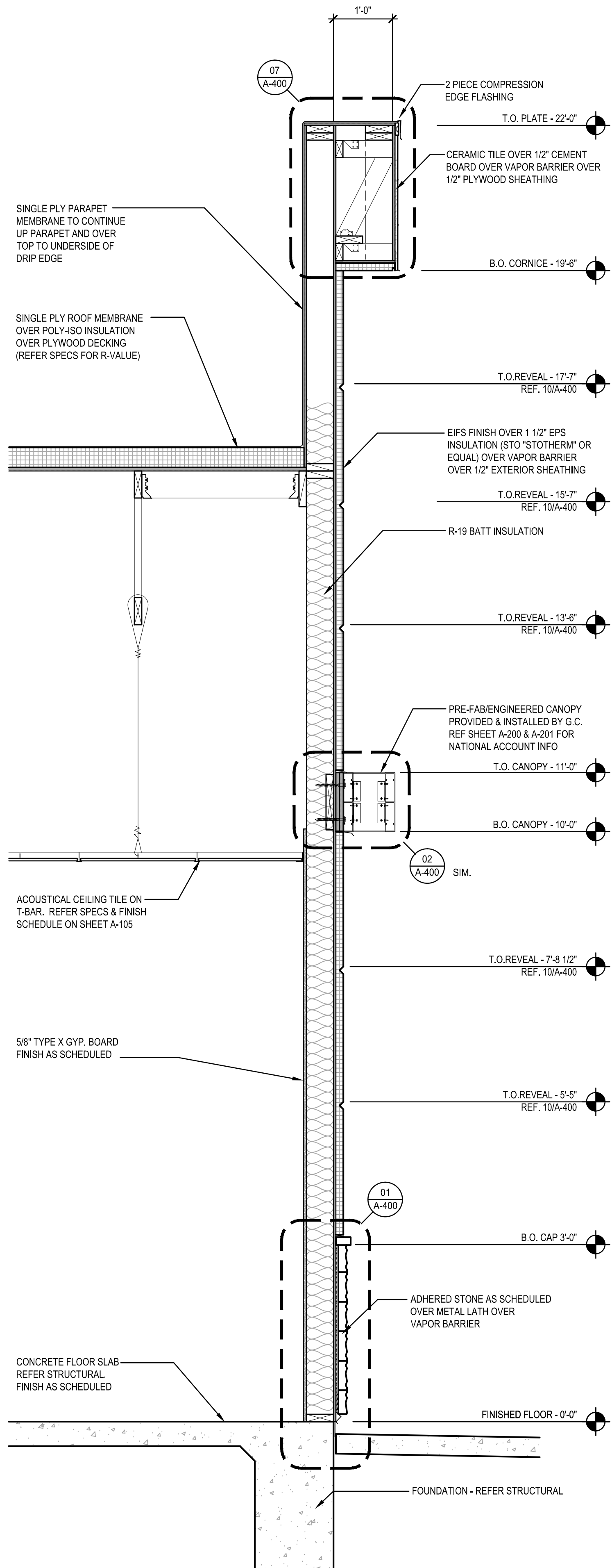


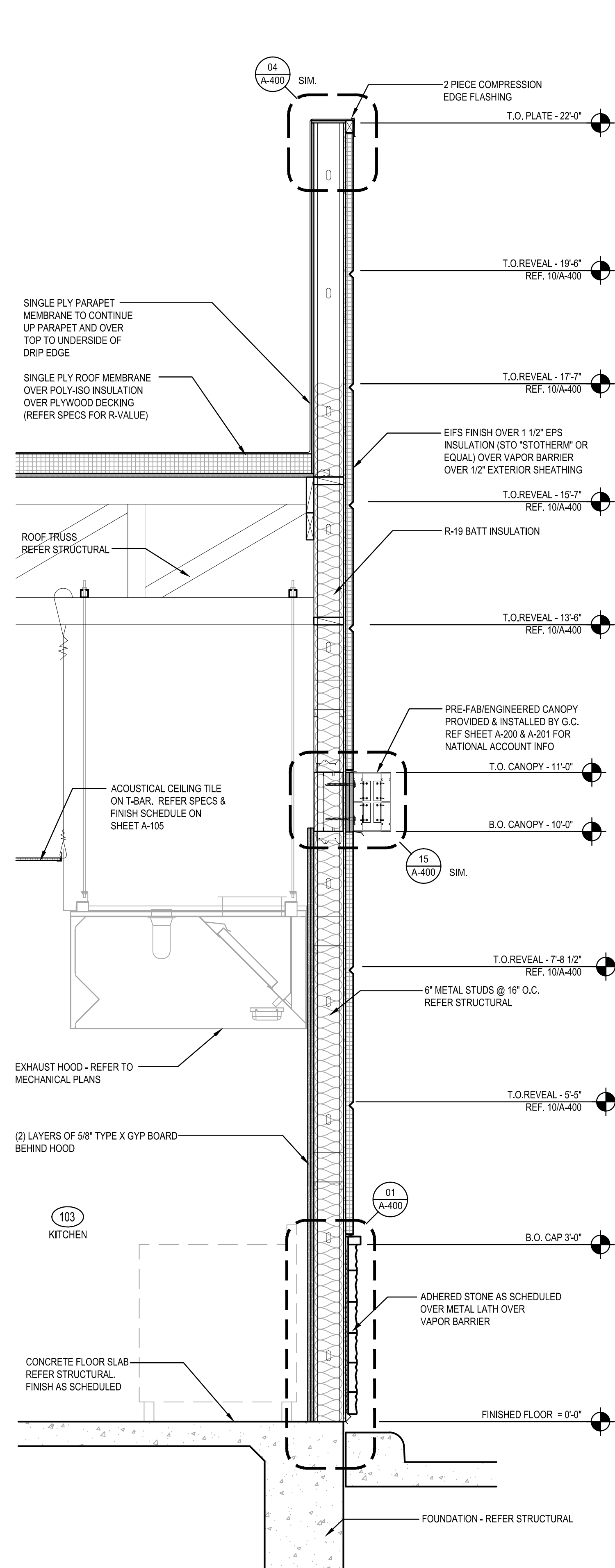
SECTION AT FAR RIGHT PORTION OF ENTRY WALL 1

Scale= 3/4" = 1'-0" A-303



SECTION AT RIGHT PORTION OF REAR WALL 2

Scale= 3/4" = 1'-0" A-303



SECTION AT MIDDLE PORTION OF DRIVE-THRU WALL 3

Scale= 3/4" = 1'-0" A-303



PANDA RESTAURANT GROUP INC.
1683 Walnut Grove Ave.
Rosemead, California
91770
Telephone: 626.799.9898
Facsimile: 626.372.8288

All ideas, designs, arrangement and plans indicated or represented by this drawing are the property of Panda Express Inc. and were created for use on this specific project. None of these ideas, designs, arrangements or plans may be used by or disclosed to any person, firm, or corporation without the written permission of Panda Express Inc.

REVISIONS:

ISSUE DATE:

1st	ISSUE FOR PERMIT	02-15-17
2nd	ISSUE FOR BID	02-22-17

DRAWN BY: RR

PANDA PROJECT #: S8-17-D4968
ARCH PROJECT #: 1703

RANDY REYNOLDS
ARCHITECT

1702 MILDARE COURT - THOMPSONS STATION, TN 37179
PHONE (615) 591-0675 □ FAX (866) 594-1225



PANDA EXPRESS
Terraces at Suwanee Gateway (in front of Lowe's)
3276 LAWRENCEVILLE-SUWANEE RD
SUWANEE, GA

2200 TRUE WARM & WELCOME

A-303

WALL SECTIONS