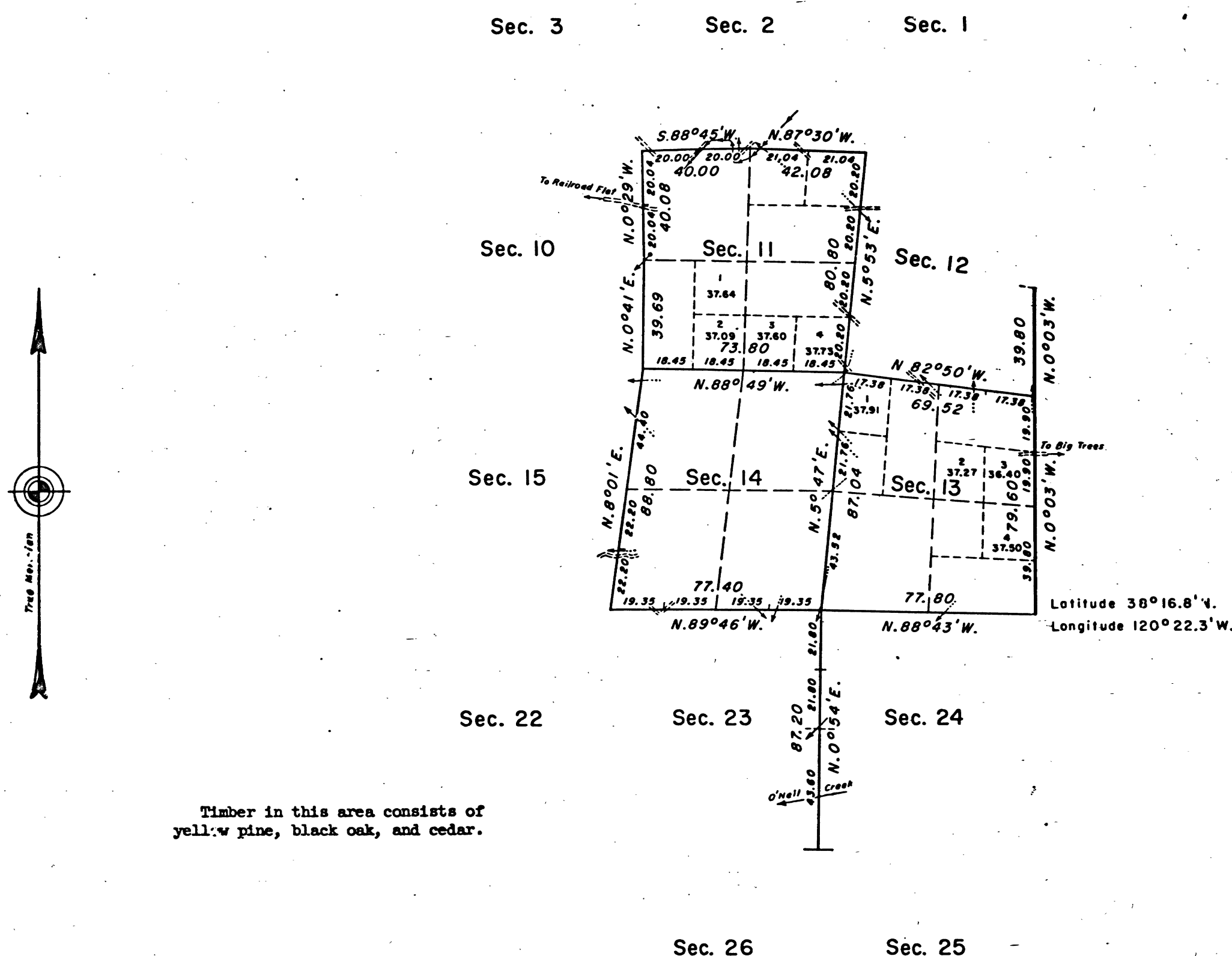


TOWNSHIP 5 NORTH, RANGE 14 EAST, OF THE MOUNT DIABLO MERIDIAN, CALIFORNIA.
DEPENDENT RESURVEY



This plat represents a retracement and reestablishment of a portion of the east boundary and a portion of the subdivisional lines, designed to restore the corners in their true original location according to the best available evidence; and, excepting as new or modified vacant subdivisions are shown hereon, the lottings and areas are as shown on the plat approved March 25, 1874.

The east boundary surveyed by Fleming
Amyx in 1859.

A portion of the subdivisional lines surveyed by George B. Tolman in 1873.

Dependent resurvey of a portion of the east boundary and a portion of the subdivisional lines, T. 5 N., R. 14 E., Mount Diablo Meridian, California, executed by Beverly W. Capell, November 15, 1957, to September 3, 1958, under Special Instructions dated November 12, 1957, which provide for the surveys included under Group No. 441, California.

UNITED STATES DEPARTMENT OF THE INTERIOR
BUREAU OF LAND MANAGEMENT
Washington, D.C. May 19, 1961

This plat is strictly conformable to the approved field notes, and the survey, having been correctly executed in accordance with the requirements of law and the regulations of this Bureau, is hereby accepted.

For the Director

Donald Clement
Cadastral Engineering Staf. Officer

BLM 358

41 449-A

T 5 N., R. 14 E., MDM