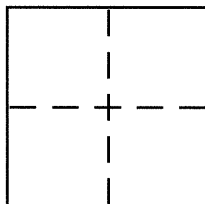


**CORNER RECORD**Document Number CR 8075City of OAKLANDCounty of ALAMEDA, CaliforniaBrief Legal Description LOT 2280, PIEDMONT PINES (14M40)**CORNER TYPE**Government Corner ☐ Control ☐Meander ☐ Property ☒Rancho ☐ Other ☐Date of Survey JAN 23, 2016**COORDINATES (Optional)**

N. \_\_\_\_\_

E. \_\_\_\_\_

Zone \_\_\_\_\_ NAD27 ☐ NAD83 ☐

NAD83 Epoch \_\_\_\_\_

Elev. \_\_\_\_\_

Vert. Datum: NGVD29 ☐ NAVD83 ☐Meas. Units: Metric ☐ Imperial ☐
**Corner -** Left as found ☐ Found and tagged ☐ Established ☒ Reestablished ☐ Rebuilt ☐

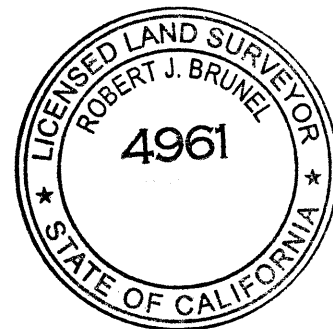
Identification and type of corner found: Evidence used to identify or procedure used to establish or reestablish the corner:

SEE OTHER SIDE

A description of the physical condition of the monument as found and as set or reset: \_\_\_\_\_

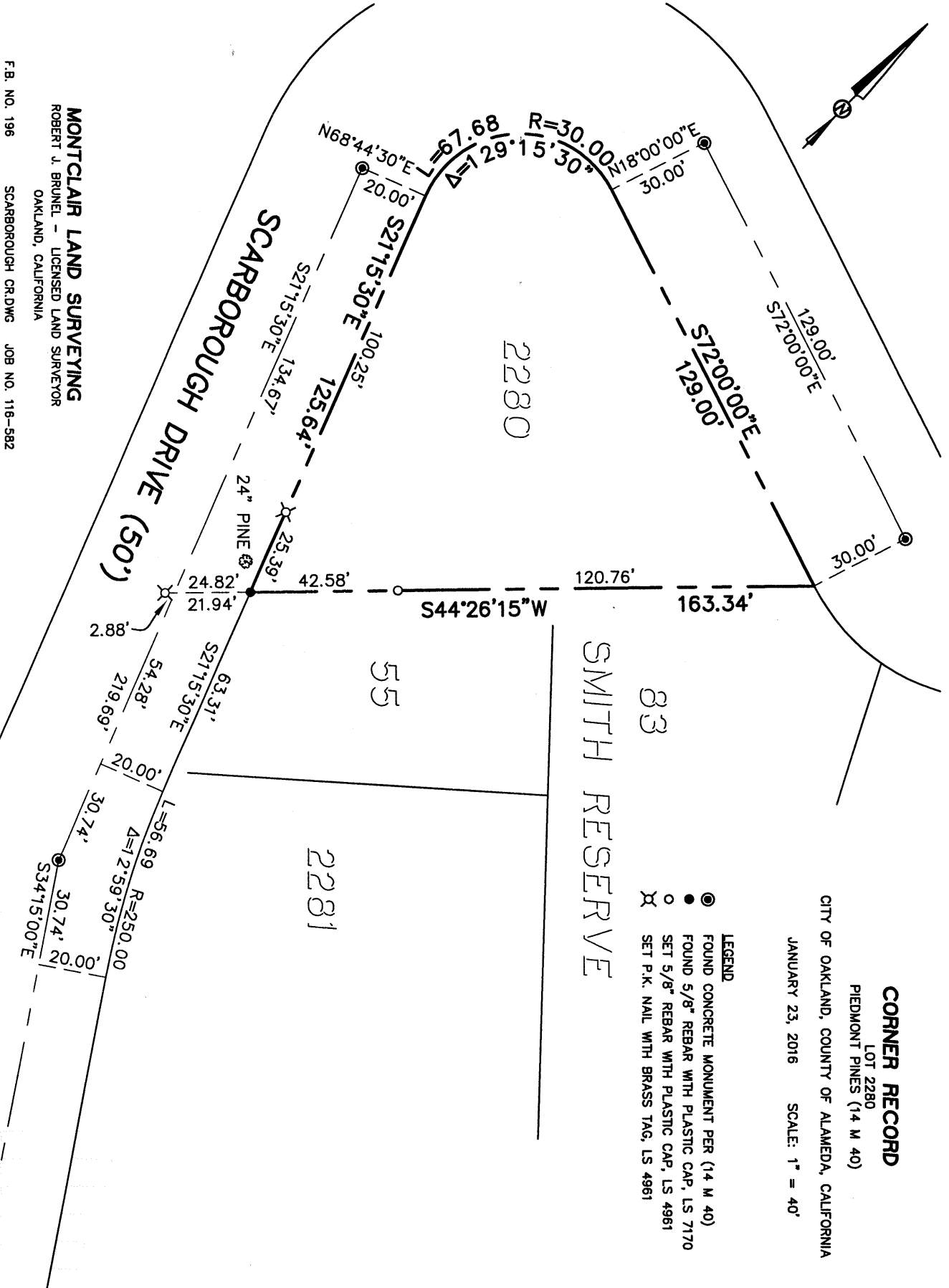
SEE OTHER SIDE**SURVEYOR'S STATEMENT**

This Corner Record was prepared by me or under my direction in conformance with

the Land Surveyor's Act on JANUARY 26 2016Signed Robert J. Brunel P.L.S or R.E.E. No. 4961**COUNTY SURVEYOR'S STATEMENT**This Corner Record was received 17 FEBRUARY, 2016and examined and filed 7 APRIL, 2016Signed Michael Rubner P.L.S or R.E.E. No. 6843Title COUNTY SURVEYOR

County Surveyor's Comment \_\_\_\_\_

**MONTCLAIR LAND SURVEYING**  
 ROBERT J. BRUNEL - LICENSED LAND SURVEYOR  
 OAKLAND, CALIFORNIA  
 F.B. NO. 196    SCARBOROUGH CR.DWG    JOB NO. 116-582



**CORNER RECORD**  
 LOT 2280  
 PIEDMONT PINES (14 M 40)  
 CITY OF OAKLAND, COUNTY OF ALAMEDA, CALIFORNIA  
 JANUARY 23, 2016    SCALE: 1" = 40'

**LEGEND**  
 ● FOUND CONCRETE MONUMENT PER (14 M 40)  
 ● FOUND 5/8" REBAR WITH PLASTIC CAP, LS 7170  
 ○ SET 5/8" REBAR WITH PLASTIC CAP, LS 4961  
 X SET P.K. NAIL WITH BRASS TAG, LS 4961