

SURVEYOR'S CERTIFICATE

This map correctly represents a survey made by me in conformance with the requirements of Chapter 15 of Division 3 of the Business and Professions Code at the request of the Foothill Junior College District and Independent Order of Oddfellows in July, 1958.

Lloyd B. Baker
Registered Civil Engineer No. 7848

COUNTY SURVEYOR'S CERTIFICATE

This map has been examined for conformance with the requirements of Chapter 15 of Division 3 of the Business and Professions Code this 29th day of Aug., 1958.
JAMES B. ENOCHS, Acting County Surveyor

by: *[Signature]*
Deputy

COUNTY RECORDER'S CERTIFICATE

Filed for record this 3rd day of September, 1958, at 2:15 P.M. in Book 97 of Maps at Page 6, at the request of Lloyd B. Baker
SYL C. TULLY, County Recorder

\$500

by: *[Signature]*
Deputy

RECORD OF SURVEY

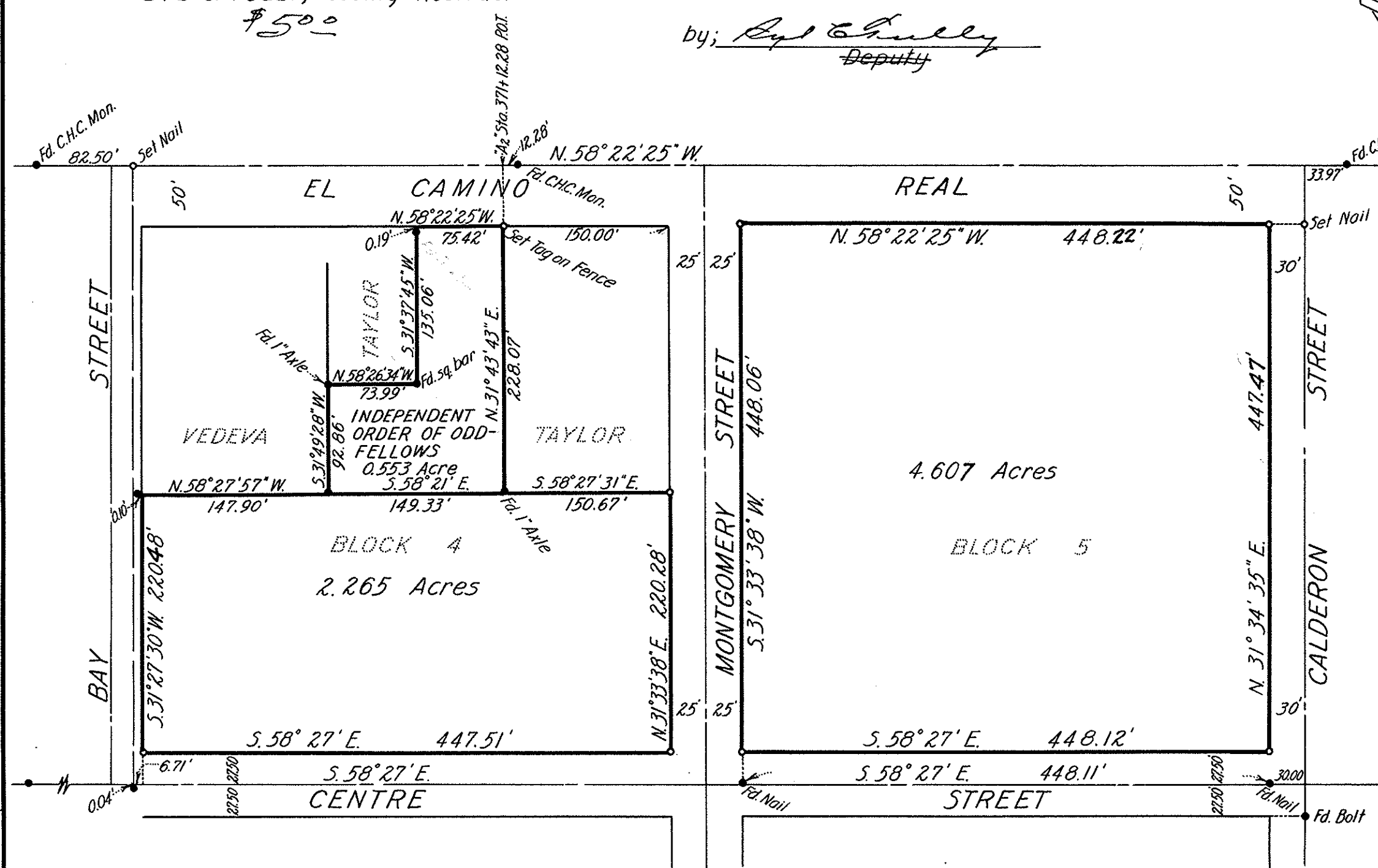
OF LAND OF

FOOTHILL JUNIOR COLLEGE DISTRICT

BEING BLOCK 5 & A PORTION OF BLOCK 4
OLD MOUNTAIN VIEW TRACT

CITY OF MOUNTAIN VIEW

SANTA CLARA COUNTY, CALIFORNIA
AUGUST, 1958 SCALE: 1"=100'



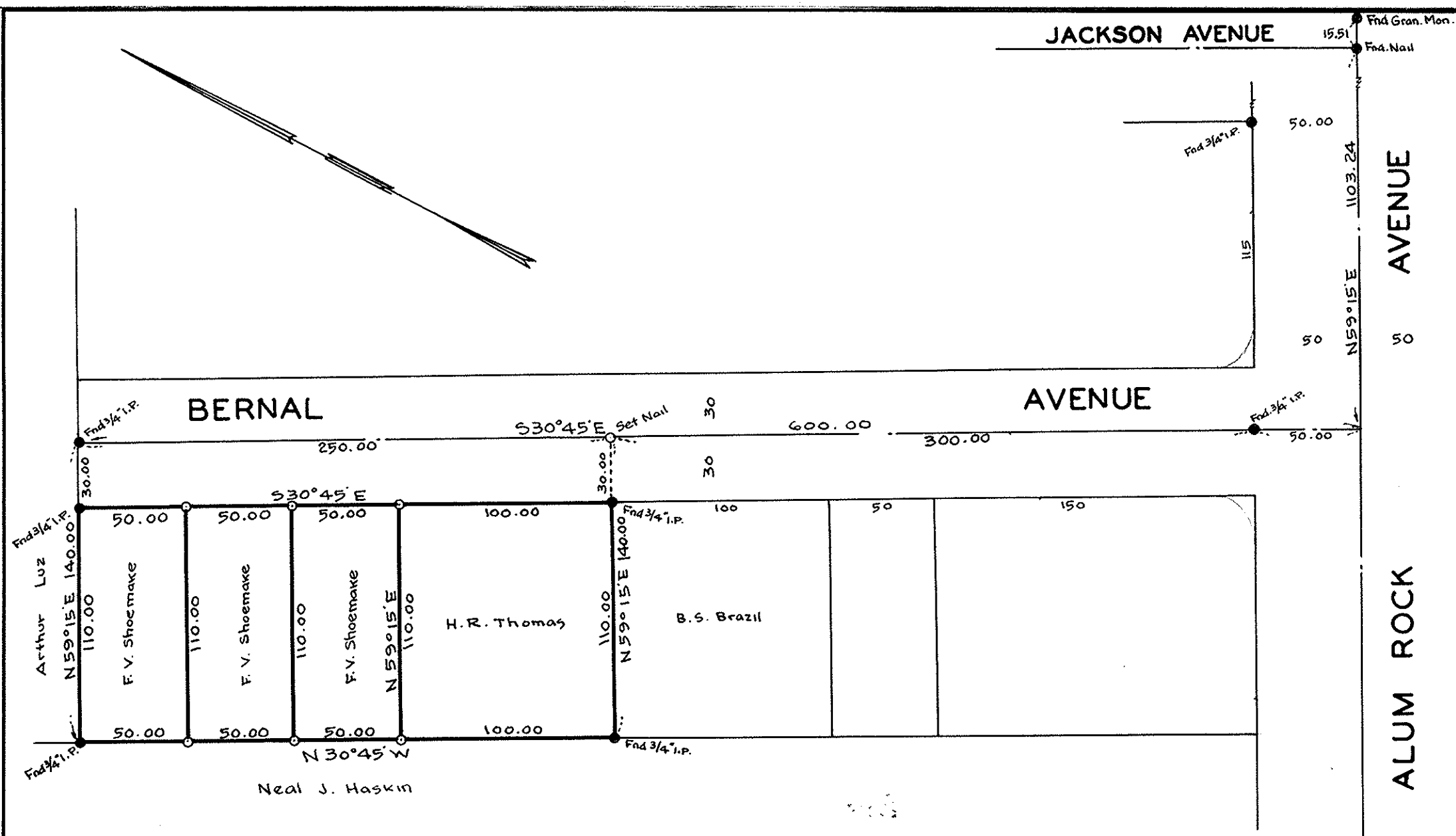
BASIS OF BEARINGS & NOTES

The bearing of the center line of Centre Street (S. 58° 27' E.) as shown upon that certain Record of Survey Map of the Town of Mountain View, recorded in Book 29 of Maps at Page 38, Santa Clara County Records, was taken as the basis of bearings shown on this map. All distances and dimensions are shown in feet and decimals thereof.

- Indicates Iron Pipe Found
- Indicates Iron Pipe Set

97
6

BW 6



This map correctly represents a survey made under my direction in conformance with the requirements of Chapter 15 of Division 3 of the Business and Professions Code at the request of F.V. Shoemaker and H.R. Thomas in July, 1958.

Mark Thomas
Registered Civil Engineer No. 2578

The bearing (S. 30° 45' E.) of the southwesterly line of Bernal Avenue as shown on Record of Survey map recorded in Book 58 of Maps, page 22, Santa Clara County Records, was used as basis of bearings shown upon this map.

- Indicates 3/4" iron pipe set, unless otherwise noted.
- Indicates monument found.

This map has been examined for compliance with the requirements of Chapter 15 of Division 3 of the Business and Professions Code this 18th day of Aug., 1958.

James B. Enoch, Acting County Surveyor

By *[Signature]* Deputy

97
6

1511843

Filed for record this 2nd day of Sept, 1958
at 11:06 A.M. in Book 97 of Maps, at page 6,
at the request of Mark Thomas & Co.

Syl C. Tully, County Recorder

By *[Signature]*

RECORD OF SURVEY

OF PORTIONS OF 500 ACRE LOT 48 OF
PUEBLO LANDS OF THE CITY OF SAN JOSE
SANTA CLARA COUNTY CALIFORNIA
FOR

F. V. SHOEMAKE & H. R. THOMAS

SCALE-1"=60'

JULY, 1958

MARK THOMAS & CO.
CIVIL ENGINEERS & SURVEYORS
SAN JOSE CALIFORNIA

BW 6