



Tulsa Community College



The Art of Accelerating Solutions

Navigating Politics, Entrepreneurs, and Bureaucracy: The Path to Creating a Meaningful Community College Entrepreneurial Program

Presented by

Carol Messer, Former Provost

carolmesser354@gmail.com

Sean Griffin, Entrepreneurial Program Developer

sgriffin@vizalution.com

Kristen Bergman, Entrepreneurial Thought Leader

kbergman@vizalution.com

Carol Messer



Recently Retired Provost

Over 32 Years of Community College
Experience

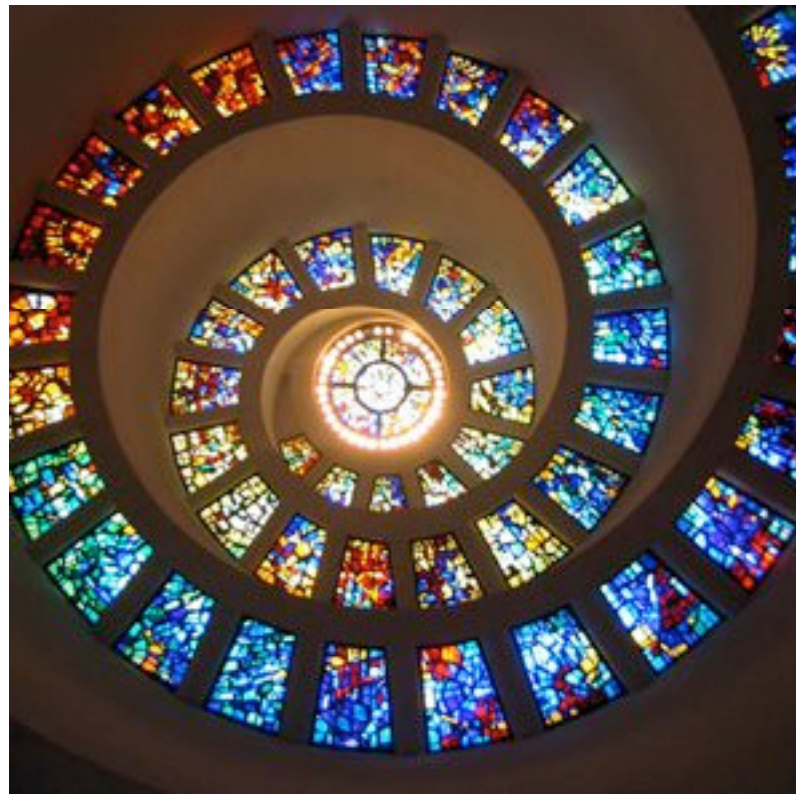
Tulsa Entrepreneurial Initiatives
Member



- Serving Tulsa and the surrounding area since 1970
- Consistently ranked in the two percent of community colleges in the number of associate degrees awarded
- Oklahoma's largest two year college serving over 27,000 students a year
- 65% of Tulsa County students begin their college education at Tulsa Community College
- Focus on preparing students for advanced studies or career preparedness
- Has four campuses in operation



The Awakening





Presidential Charge!

Create a Meaningful Entrepreneurial Program



President, Dr. Tom McKeon



Game Changer

Like I Didn't Have Enough to Do!



Started Collecting
Allies and
Sharing Charge

Don't Waste
Time with
Settlers or
Stragglers



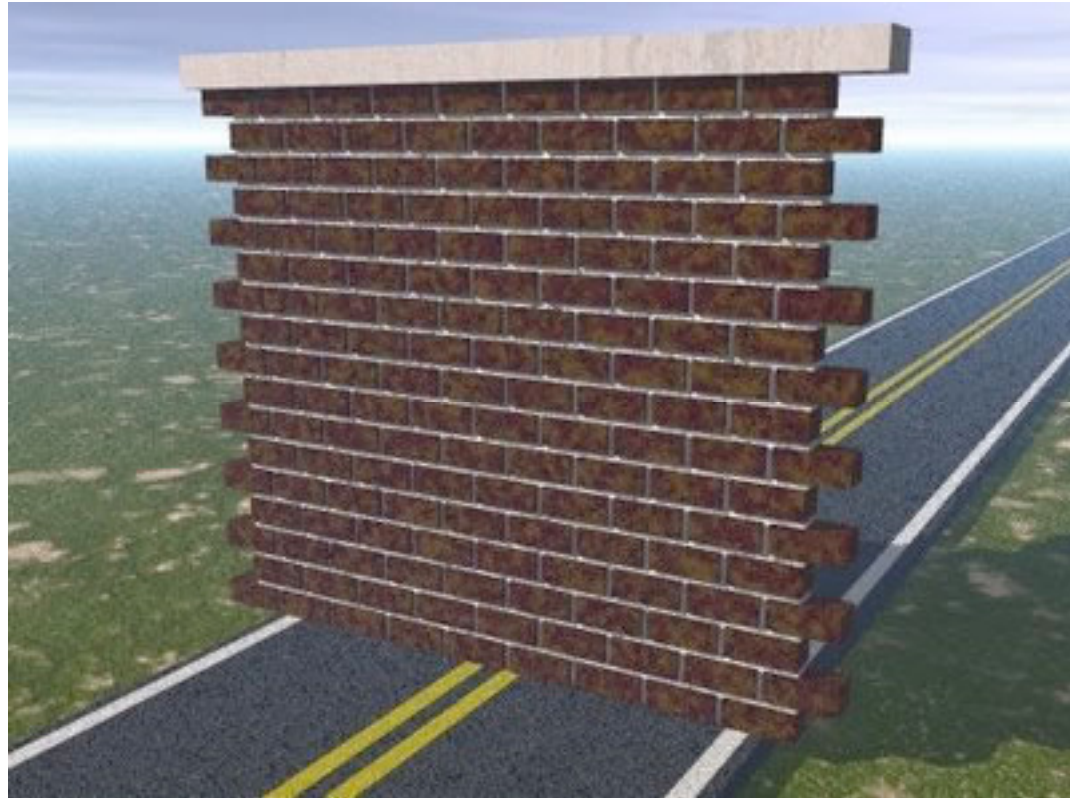


Look for Pioneers!
The Settlers Will
Come Along

Don't Put Tape on My Wall!



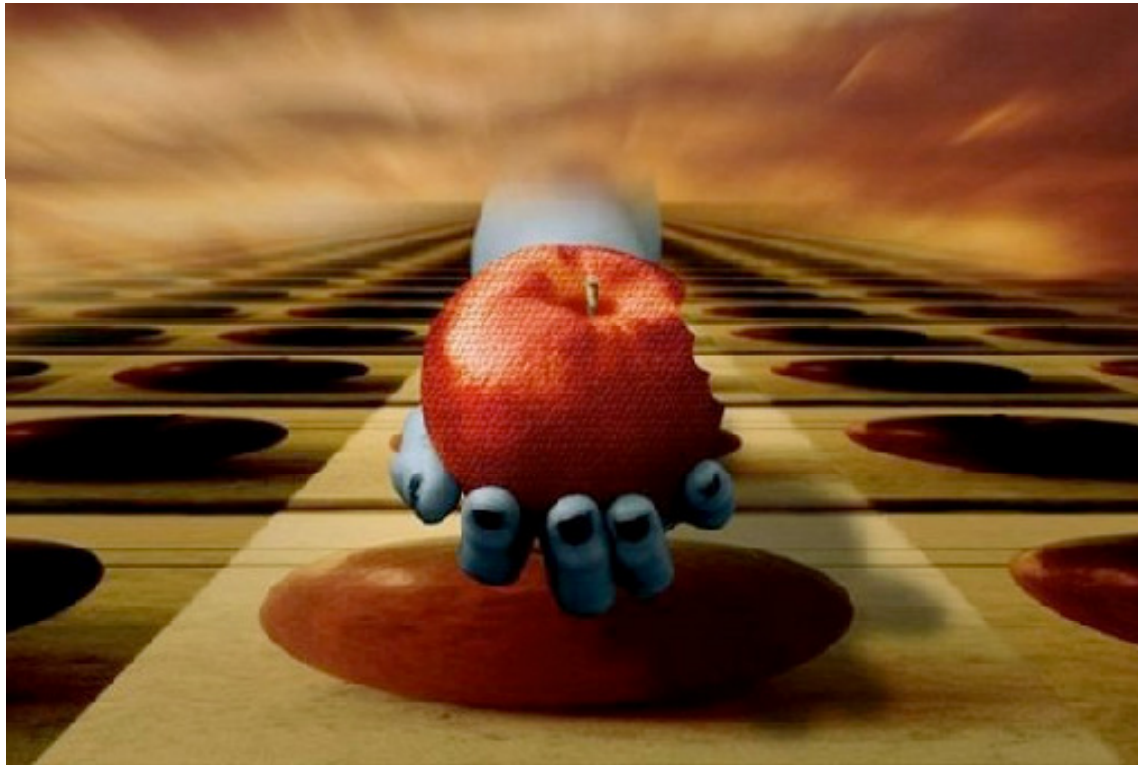
Overcoming Road Blocks



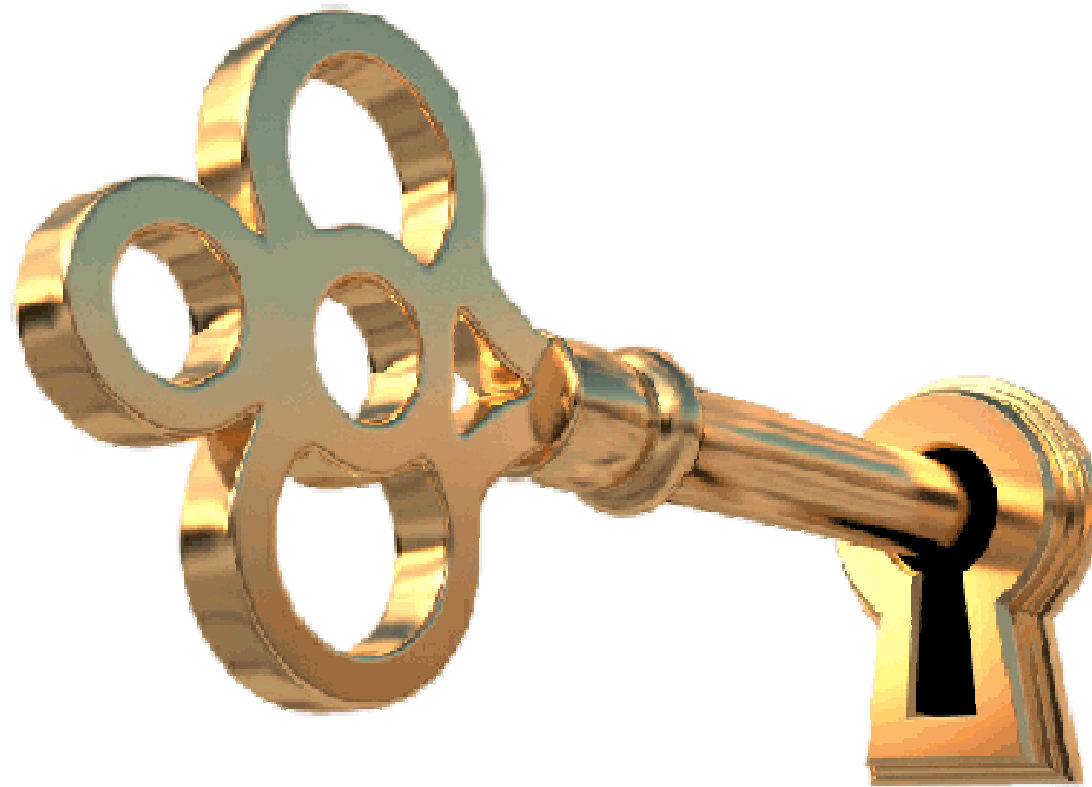
Create an Independent Fund vs. Dollars in a General Fund



Engage Creative Problem Solvers vs. Gate Keepers



Support From the Top



Don't Settle for
No!

Keep Looking for Pioneers and

YES!

People

Engage Community Leaders

- Share entrepreneurial statistics
- Highlight the power of locally grown jobs
- Gain media attention
- Engage high profile community leadership
- Collect testimonials
- Find the entrepreneurs in your community

Stuck in a Rut
Started Doing Things the Same Old Way



Working with Faculty on Traditional Curriculum





Not Looking Like Game Changing

Think Differently



Ah Ha!

Mayor Kathy Taylor

Strong Entrepreneurial Commitment



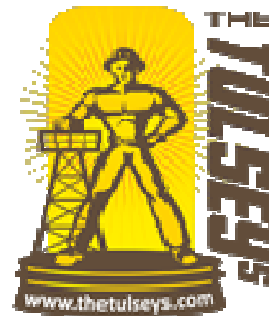
Sean Griffin

Tulsa Economic Development Commission Chair of Entrepreneurial Initiatives



History with TCC includes: Graphic Facilitation, One-College Initiative, Creativity Courses, and Strategic Planning.

Designed and Implemented



Invited Sean to Lunch

Made Ask

Not Just No



NEVER EVER
EVER
GIVE UP!





What if I protected
you?

Would not have to deal with the
Gatekeepers.

HELL,
YES.

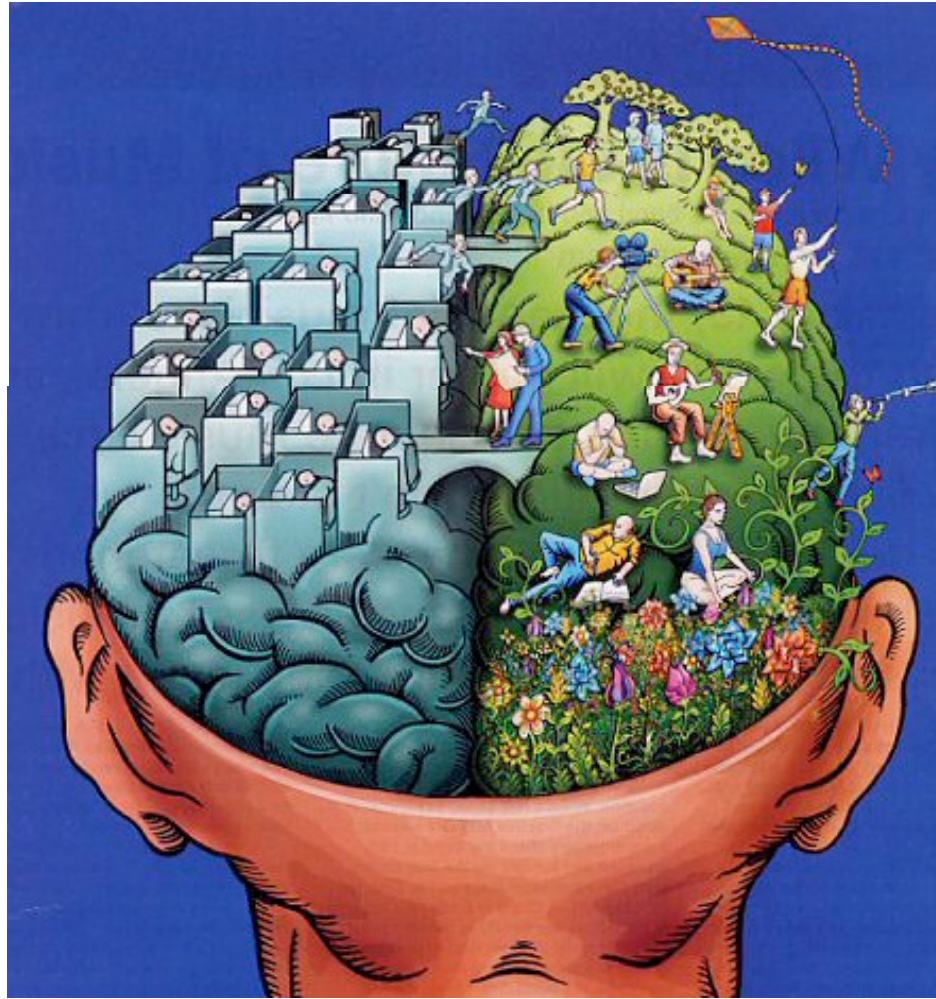


Now what?

Find Money!



Think Different



Here Come the Focus Groups

- Engaged faculty pioneers
- Invited entrepreneurs from the community
- Held three visually facilitated focus groups



Boxed Into College Thinking



The College
Not Seen as Entrepreneurial,
Innovative,
or as a Place for Entrepreneurs
by the Community



Sean Griffin
Visual Thinking
Entrepreneur,
StartUp Mixologist, &
Silicon Valley Transplant

VIZALUTION™

The Art of Accelerating Solutions



Visual Thinking Company
Group Processes
Organizational Change
Entrepreneurial Programming
Entrepreneurial Ecosystems
Performance Cultures



Modified Visualizing the Steps to Starting Your StartUp Think-A-Torium®



Presented to Original
Entrepreneurial Team at College

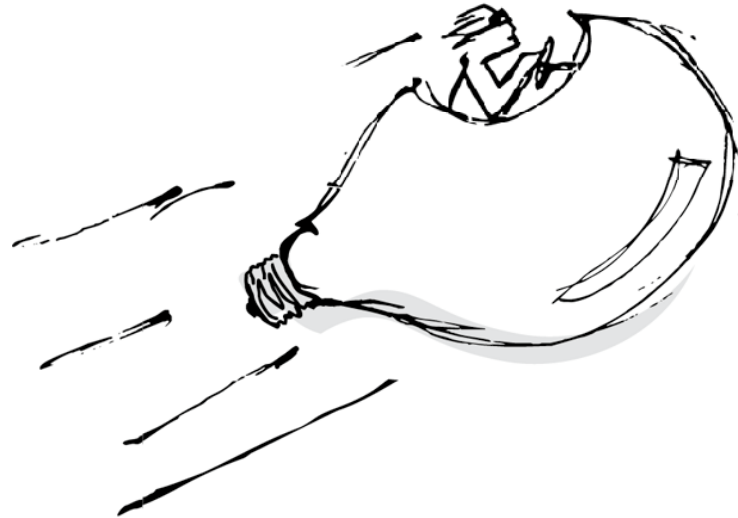
Got Excited!
We Need All Our Programs
Developed Like This. . .

Engaged 36 Thought Leaders A Key to Success



Lift-Off of Launch Flight I

A New Way to Teach Entrepreneurs How to Start a StartUp



Business Model Development
Coaching and Mentoring Process

Silicon Valley Style Liftoff Event

Pitches

Networking

Press

Dignitaries

New Opportunity

Mayor Kathy Taylor Leaves Office



Entrepreneurial Ecosystem Emerges





Kristen Bergman,
President of Vizalution
Attends First NACCE
Conference

Moratorium on Travel @ TCC

Discovered Traditional Entrepreneurial Programming

Frustrated



Need Entrepreneurs to Teach
Entrepreneurs How to Start
StartUps

Extraordinary Results





Entering Fifth Year

Over 400 StartUp

43 Operating StartUps

180 New Locally Grown Jobs

\$8,287,740 Annual Payroll

\$8,550,000 Funding Raised



Three Flights of Launch

112 StartUp Applications

42 StartUps Participate

7 Operating StartUps

29 New Locally Grown Jobs

\$1,353,664 Annual Payroll

\$375,000 Funding Raised



Partnering to Expand Entrepreneurial Programming Nationwide

Learn More @

Tulsa Community College

<http://www.tulsacc.edu>

Vizalution

<http://www.vizalution.com>

Start Your Own Business Model Competition

<http://www.startupspiritaward.com>

Tulsa Entrepreneurial Spirit Award Business Model Competition

<http://www.tulsaspiritaward.com>

Launch StartUp Business Model Coaching Program

<http://www.launchyourejourney.com>

Carol Messer - CarolMesser@354@gmail.com

Sean Griffin - Sgriffin@vizalution.com

Kristen Bergman - Kbergman@vizalution.com