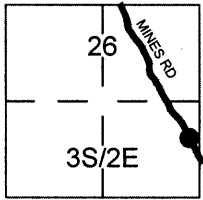


CORNER RECORD

Document Number _____

City of x County of ALAMEDA, California

Brief Legal Description COUNTY RIGHT-OF-WAY MONUMENT CONTROLLING MINES ROAD, APPROX. STA. 107+95



CORNER TYPE

Government Corner ☐ Control ☐
Meander ☐ Property ☐
Rancho ☐ Other ☒
Date of Survey 09/11/2014

COORDINATES (Optional)

N. 2058014.07 ±
E. 6209880.58 ±
Zone 3 NAD27 ☐ NAD83 ☒
NAD83 Epoch _____
Elev. _____
Vet. Datum: NGVD29 ☐ NAVD88 ☐
Meas. Units: Metric ☐ Imperial ☐

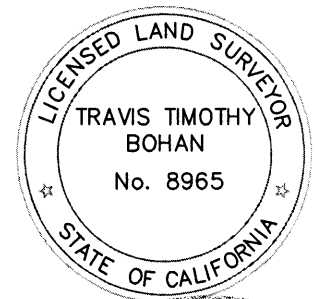
Corner - Left as found ☒ Found and tagged ☐ Established ☐ Reestablished ☐ Rebuilt ☐

Identification and type of corner found: Evidence used to identify or procedure used to establish or reestablish the corner:
County of Alameda provided navigational coordinates for monuments. The monument(s) was located magnetically
then unearthed and observed. The purpose of this corner record is to preserve the location of existing
monuments prior to construction. Please see the resulting post-construction corner record for updated descriptions
and location information.

A description of the physical condition of the monument as found and as set or reset: See attached sketch

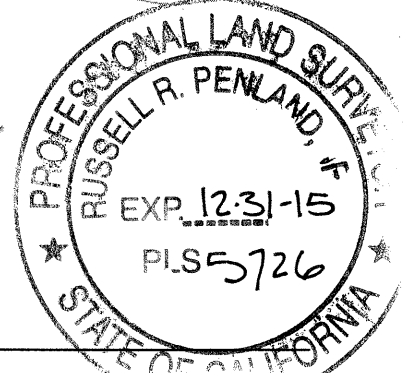
SURVEYOR'S STATEMENT

This Corner Record was prepared by me or under my direction in conformance with
the Land Surveyor's Act on September 18 20 14
Signed Travis Timothy Bohan (P.L.S.) or R.C.E. No. 8965



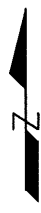
COUNTY SURVEYOR'S STATEMENT

This Corner Record was received 9-15 20 14
and examined and filed 9-23- 20 14
Signed Russell R. Penland P.L.S. or R.C.E. No. 5726
Title COUNTY SURVEYOR

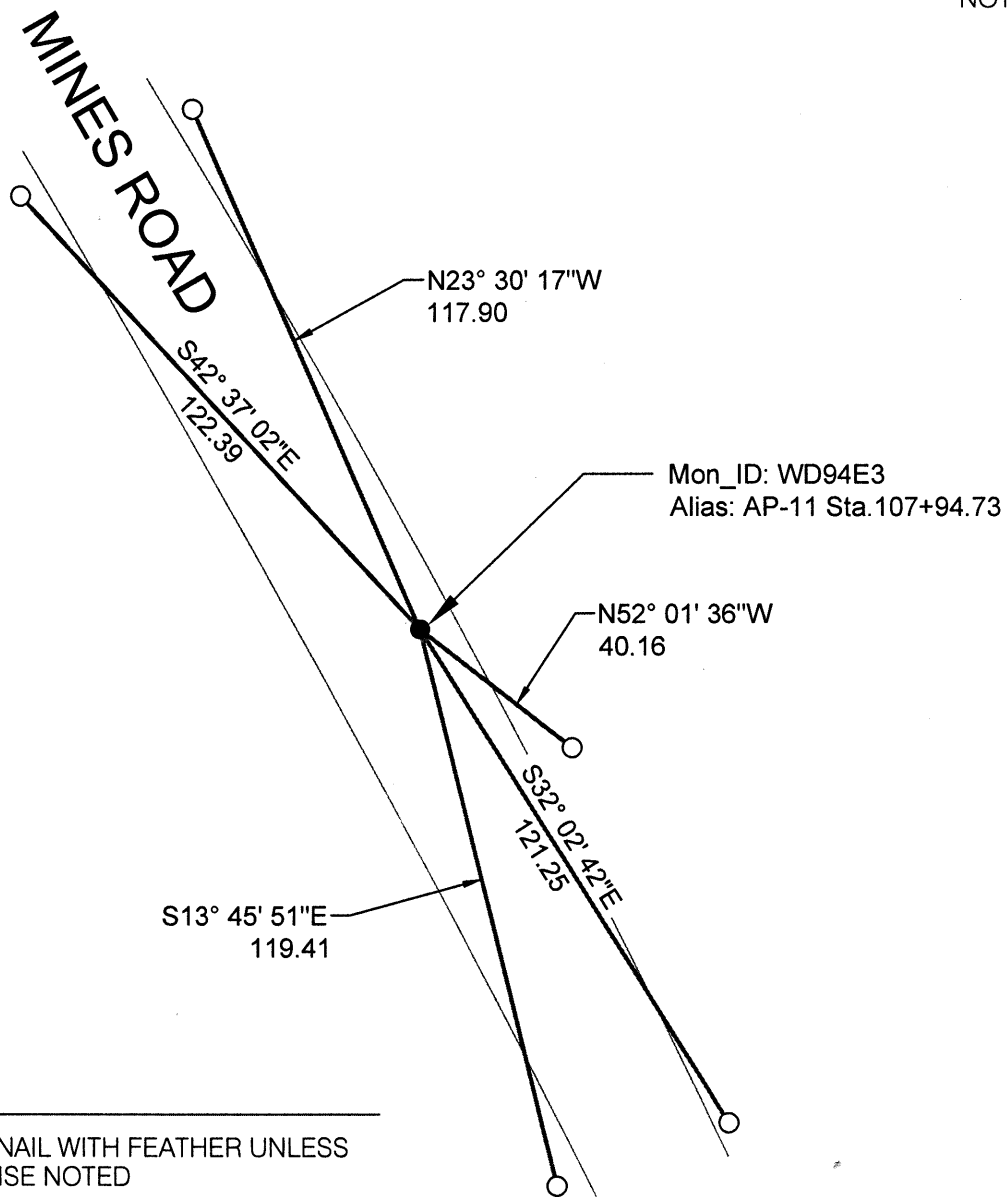


County Surveyor's Comment: _____

SPEC. 2256



NOT TO SCALE



LEGEND

- SET 60D NAIL WITH FEATHER UNLESS OTHERWISE NOTED
- FOUND RAILROAD SPIKE IN PAVEMENT DOWN ±4" UNLESS OTHERWISE NOTED

CR6584

LUK & ASSOCIATES #14129S10